

SECTION 30

TOWNSHIP 3

RANGE 1W

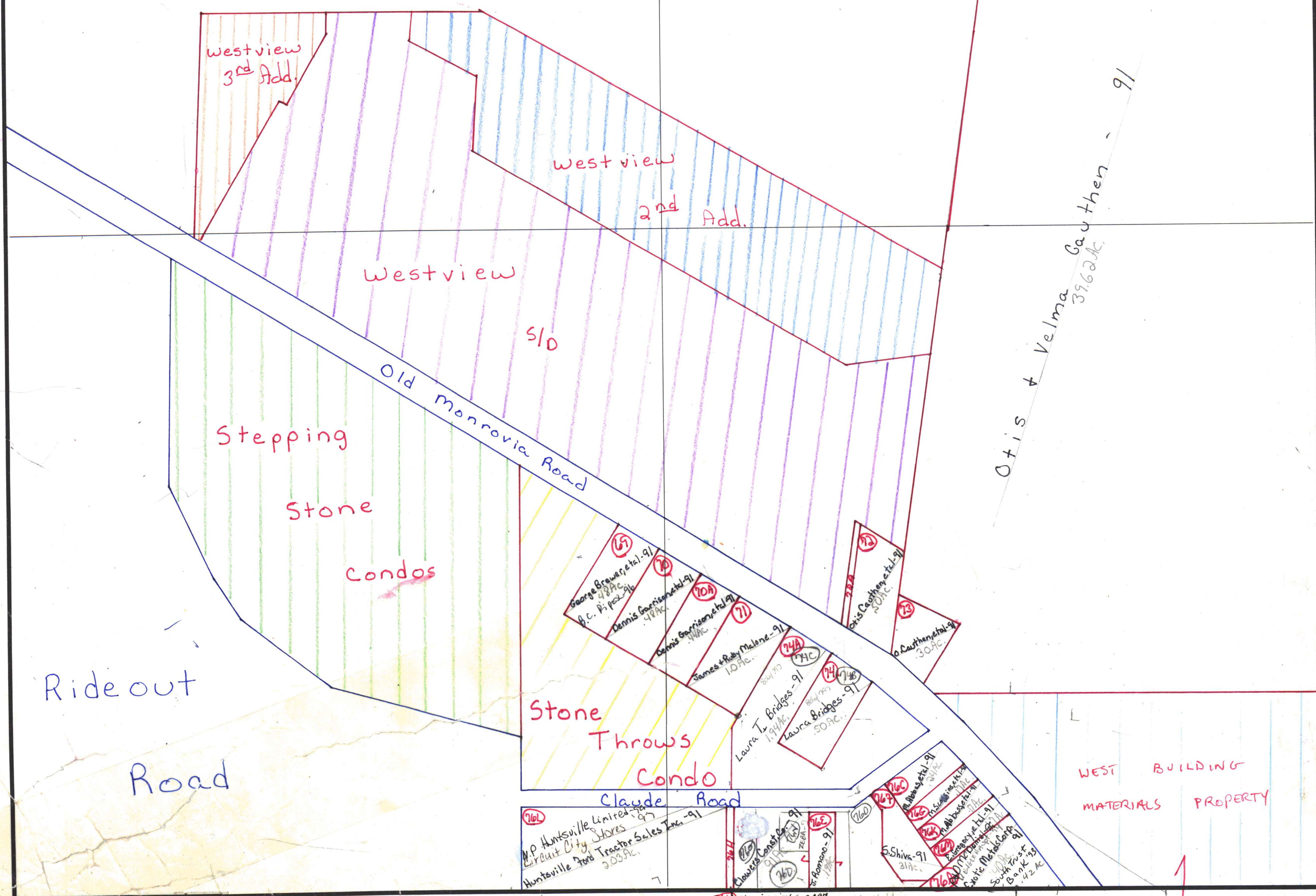
FORM 1-S.T.C.-CURRIE SYSTEMS, INC.

SE 1/4  
MUN 07-1150 CITY

15	16	17	18	19	20	21	22
Lamb	Lamb	Lamb	Lamb	Lamb	Lamb	Lamb	Lamb

E. Lamb 91  
.64 AC

77



Otis + Velma Gauthen - 91  
39.62 AC

Ride out  
Road

COUNTY MADISON

72A Otis Caughen, et al. 91  
.04 AC  
76H Bobby Crain, et al. 91  
.05 AC

↑ carried in  
3-1w-31

Unplatted:  
310 30 \* 72