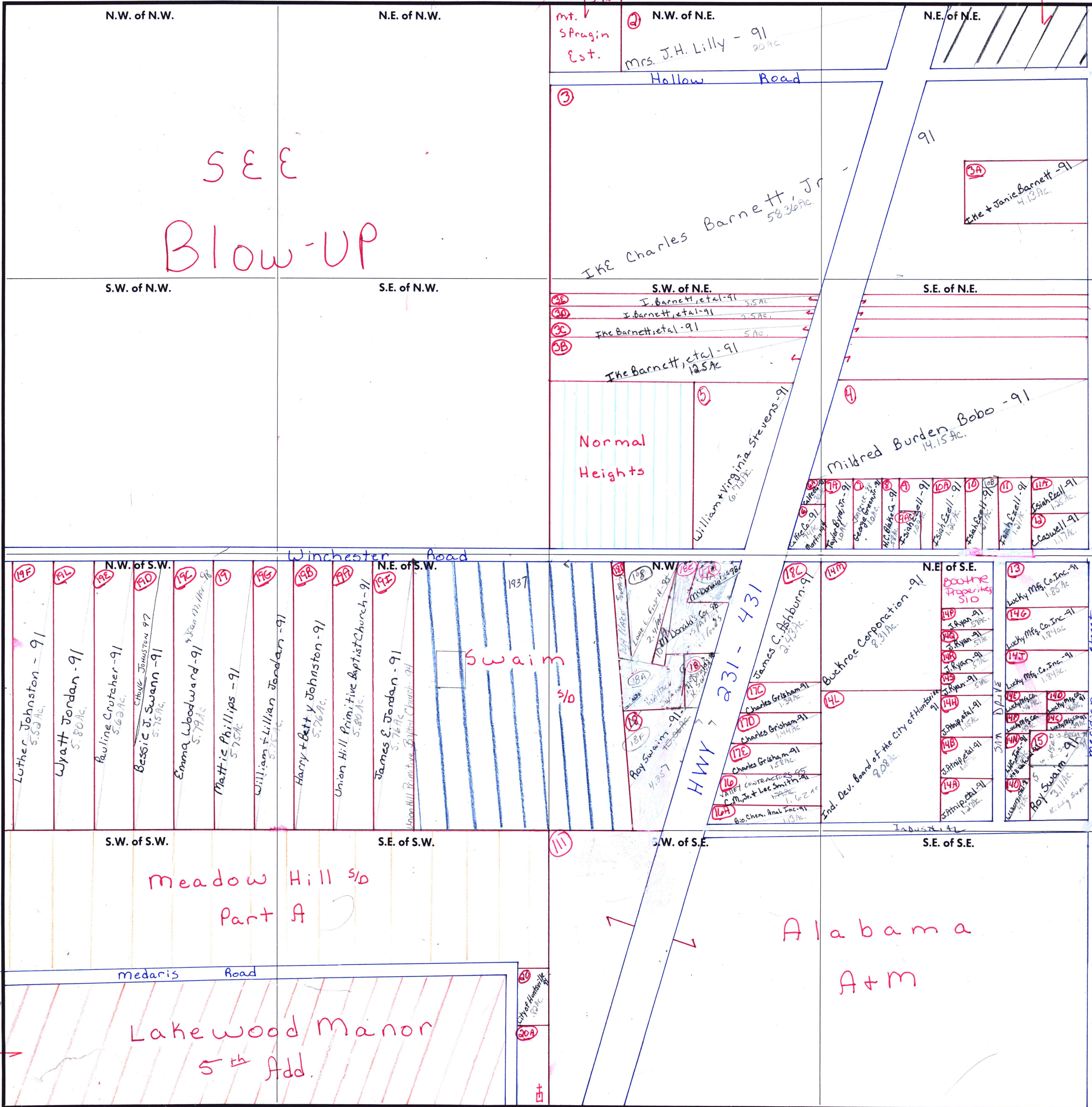


FORM 1—S.T.C.—CURRIE SYSTEMS, INC.

MUNICIPALITY - HSV CITY

Carried in 3-lw:1



SEE
Blow-UP

Normal
Heights

Swaim

Meadow Hill s/d
Part A

Lakewood Manor
5th Add.

Alabama
A+M

- (9A) United Companies - 99
- (10) SOUTHTRUST BANK - 98
- (11) SOUTHTRUST BANK - 98
- (11A) SOUTHTRUST BANK - 98
- (10B) SOUTHTRUST BANK - 98

D.S. Ball 94