

SECTION

12

TOWNSHIP

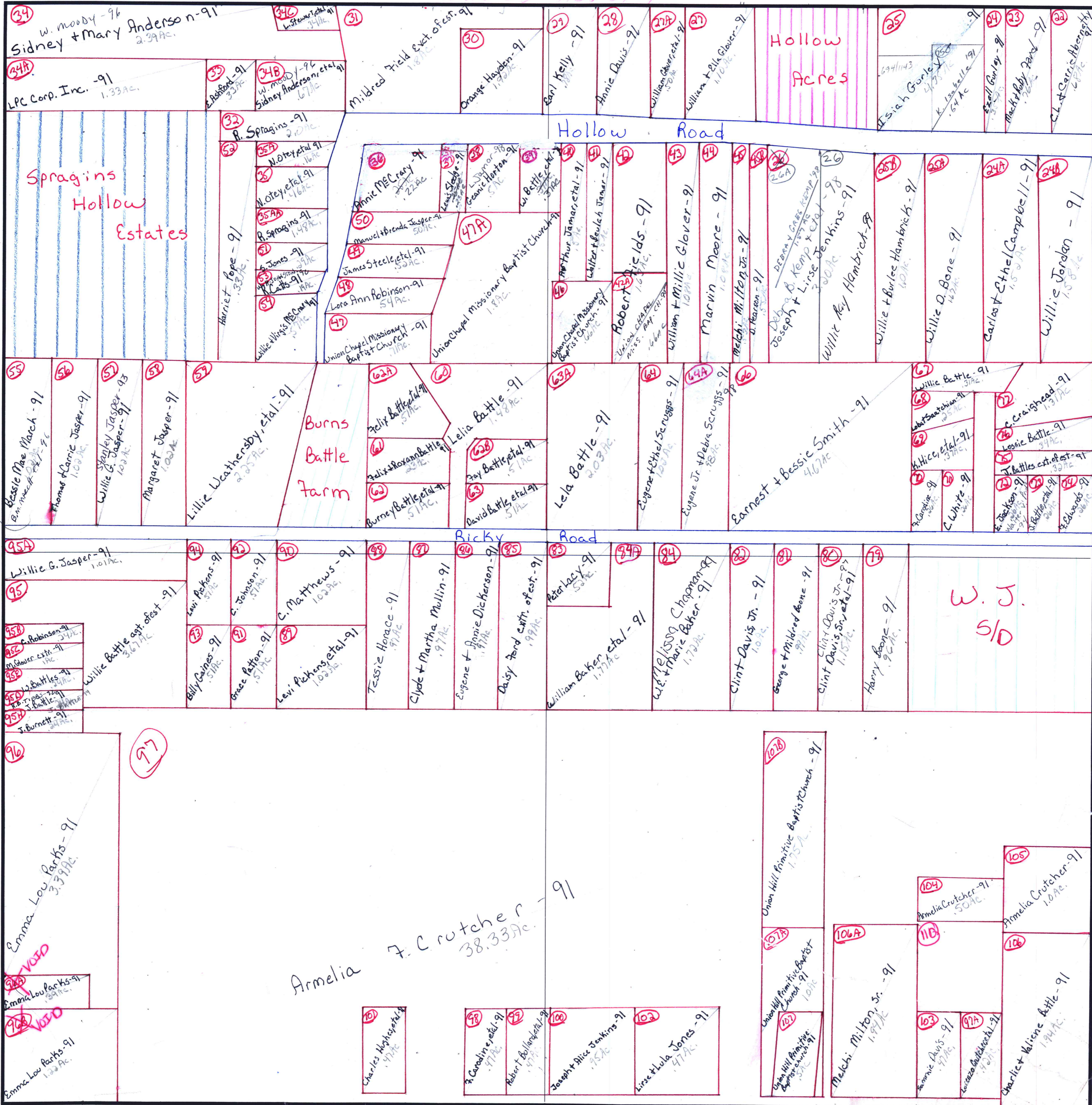
3

RANGE

1W

101

FORM 1-S.T.C.-CURRIE SYSTEMS, INC.



NW 1/4

MUN 22 - HSI CITY

Spragins
Hollow
Estates

Hollow
Acres

Burns
Battle
Farm

W. J.
S/O

Armelia
F. Crutcher - 91
38.33 ac.

Winchester Road

COUNTY MADISON