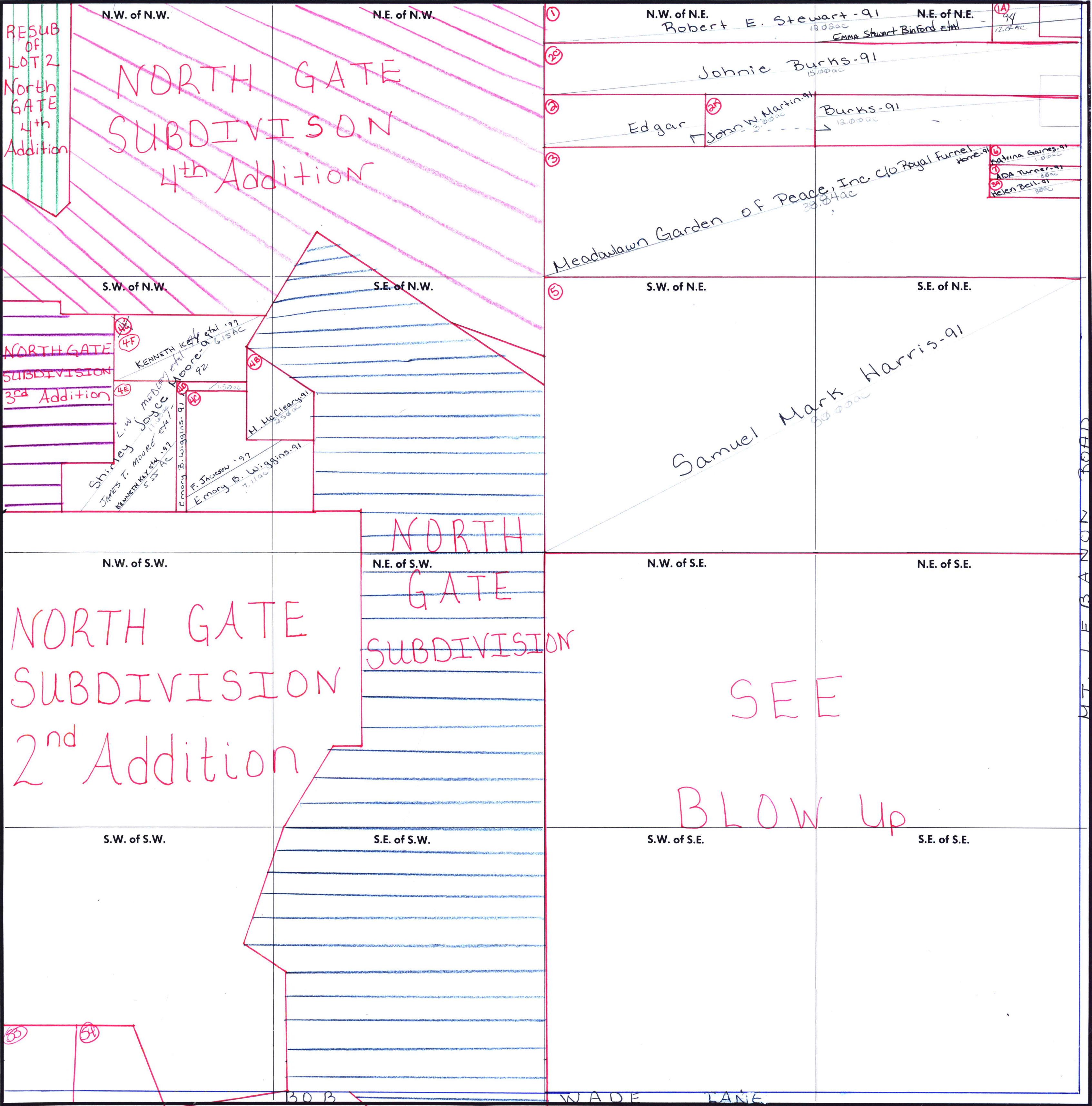


FORM 1-S.T.C.-CURRIE SYSTEMS, INC.

MUN 01 - MADISON CO.



(4D) F. JACKSON '97

RESUB OF LOT 2 North GATE 4th Addition

N.W. of N.W. N.E. of N.W. NORTH GATE SUBDIVISION 4th Addition

(1) N.W. of N.E. Robert E. Stewart - 91 13.00 ac EMMA Stewart Binford et al  
(2) N.E. of N.E. (1A) 94 12.00 ac  
(29) Johnie Burks - 91 13.00 ac  
(2) Edgar (2F) John W. Martin  
(3) Bucks - 91 12.00 ac  
(3) Meadowlawn Garden of Peace, Inc. c/o Royal Furnel Home - 91 30.84 ac  
(6) Katrina Gaines - 91 1.00 ac  
(7) ADA Turner - 91 8.00 ac  
(8) Helen Bell - 91 8.00 ac

S.W. of N.W. S.E. of N.W. NORTH GATE SUBDIVISION 3rd Addition  
(4E) KENNETH KEY et al '97 6.15 ac  
(4F) L.W. MEDLEY et al '92 1.50 ac  
(4B) H. McCleary et al '91 2.50 ac  
(4C) Shirley F. Moore et al '97 5.52 ac  
(4D) Emory B. Wiggins - 91  
(4G) F. JACKSON '97  
(4H) Emory B. Wiggins - 91 7.11 ac

(5) S.W. of N.E. S.E. of N.E. Samuel Mark Harris - 91 80.00 ac

N.W. of S.W. N.E. of S.W. NORTH GATE SUBDIVISION 2nd Addition

N.W. of S.E. N.E. of S.E. SEE BLOW UP  
S.W. of S.E. S.E. of S.E.

MT. LEBANON ROAD

WADE LANE