

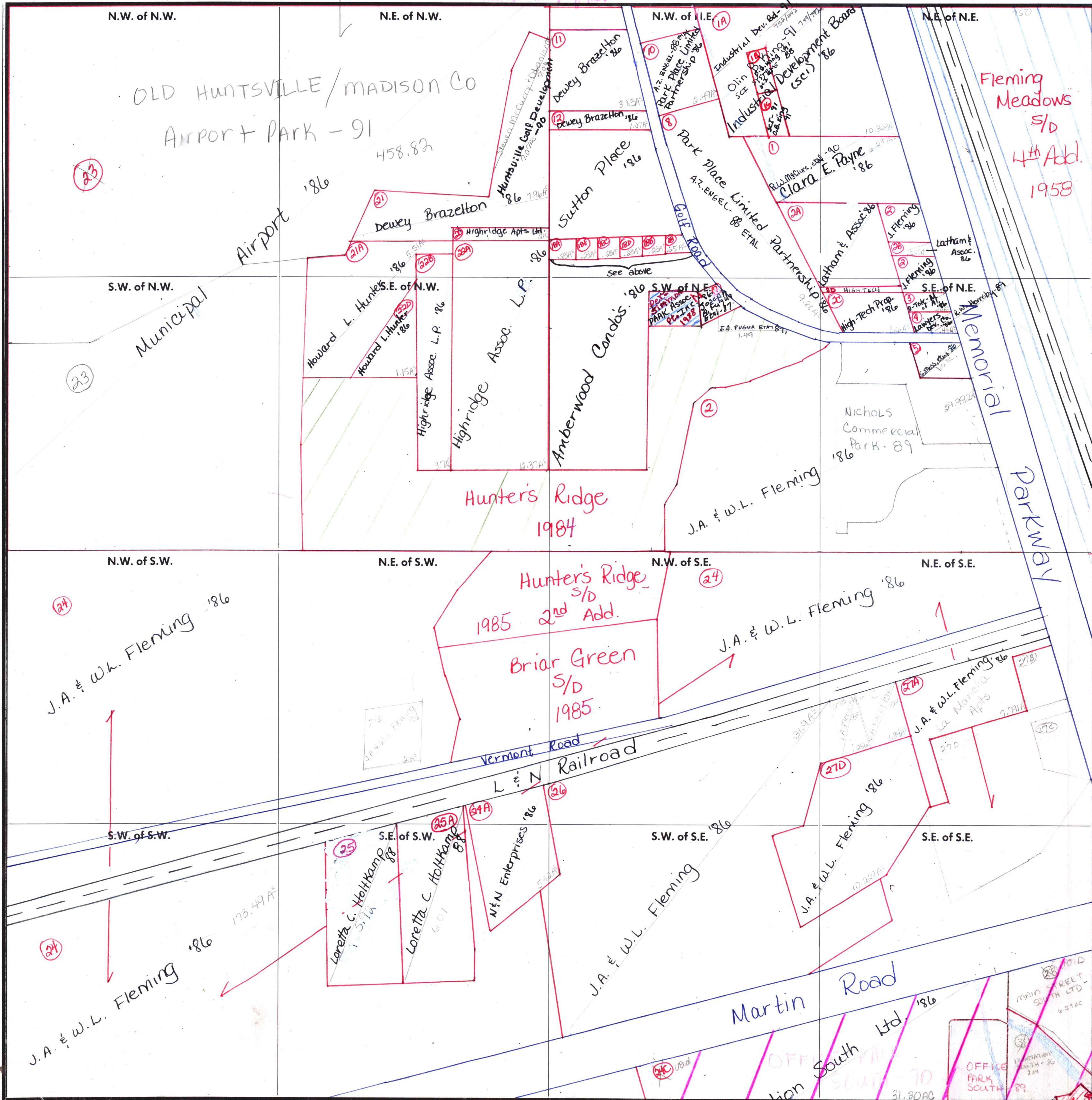
SECTION 24

TOWNSHIP 4

RANGE 1W

- (18A) Joe E. Sanders '86
- (18B) Joe E. Sanders '86
- (18C) W. Hart '86
- (18D) P.J. Saile '86
- (18E) James M. Howell '86
- (18) E. McCormick '86

FORM 1-S.T.C.-ROBERTS & SON, BIRMINGHAM



Fleming Meadows S/D
4th Add.
1958

4-1E-190

Persimmon Point
Condos-1988

4-1E-25

COUNTY MADISON

Scale - 1 inch = 300 Ft.