

NE 1/4 OF NE 1/4

mun 02 - City of HSV

SECTION

10

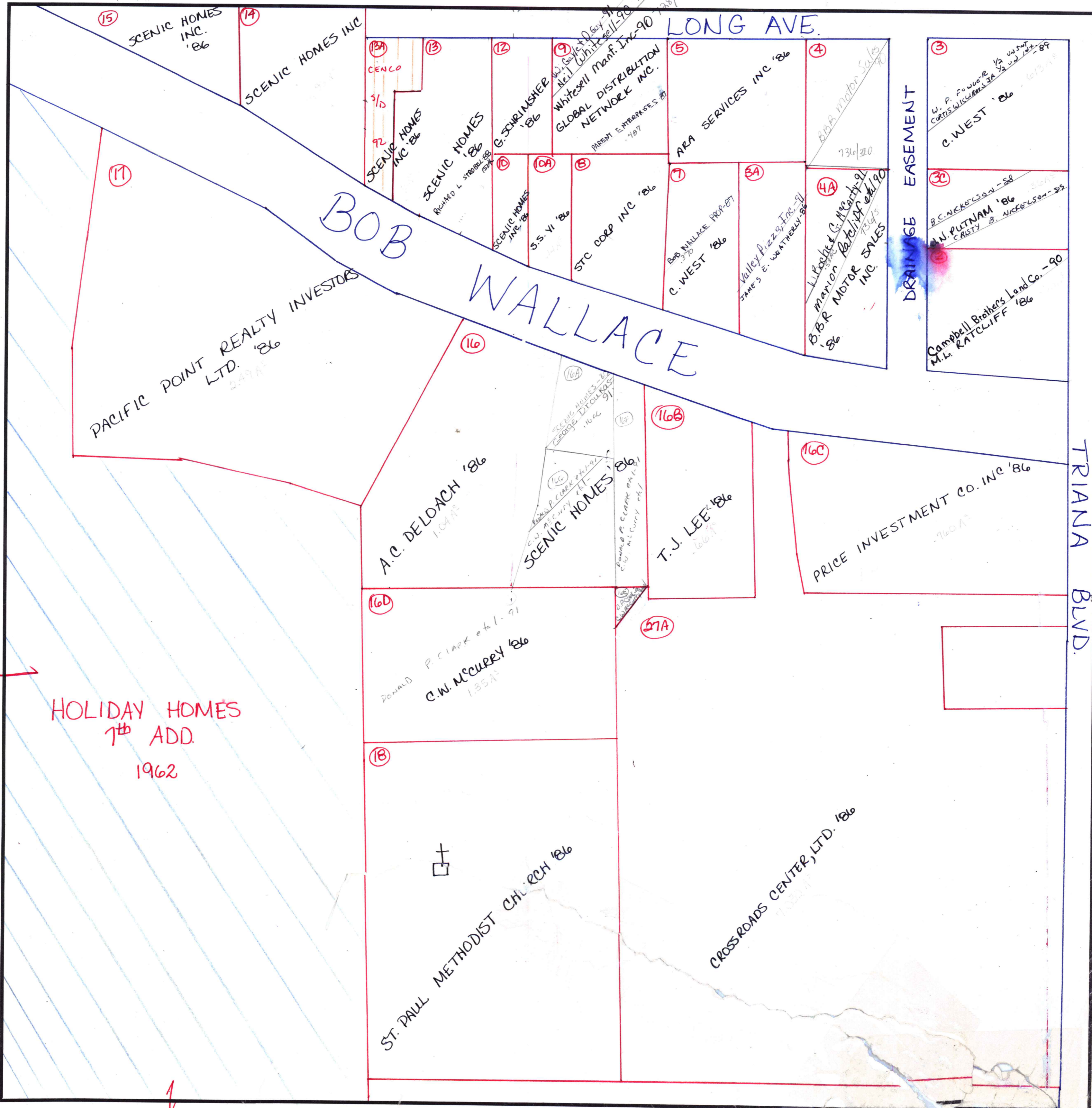
TOWNSHIP

4

RANGE

1W

FORM 1 - S.T.C. - ROBERTS & SON, BIRMINGHAM



SCENIC HOMES INC. '86

SCENIC HOMES INC

CENCO

SCENIC HOMES INC '86

SCENIC HOMES '86

G. SCHURINSHER '86

Whitehall Manf. Inc - 90

GLOBAL DISTRIBUTION NETWORK INC.

ARA SERVICES INC '86

C. WEST '86

PACIFIC POINT REALTY INVESTORS LTD. '86

BOB WALLACE

A.C. DELOACH '86

SCENIC HOMES '86

T.J. LEE '86

PRICE INVESTMENT CO. INC '86

C.W. McCURRY '86

ST. PAUL METHODIST CH. CH '86

CROSSROADS CENTER, LTD. '86

DRAINAGE EASEMENT

C. WEST '86

N. PUTNAM '86

Campbell Brothers Land Co. - 90

TRIANA BLVD.

HOLIDAY HOMES 7th ADD. 1962

COUNTY MADISON

NE 1/4 OF NE 1/4