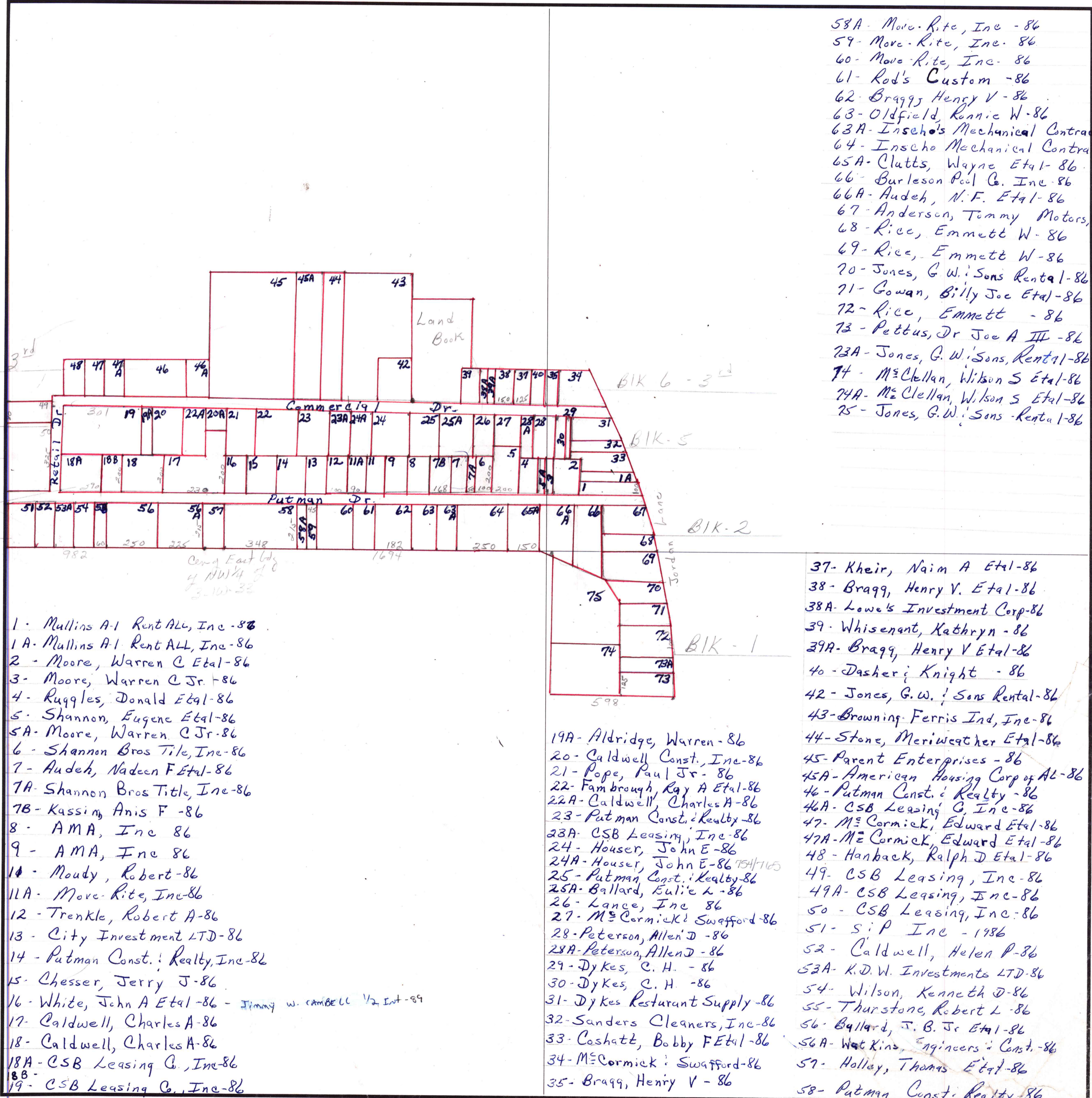


West Jordan Industrial Park

SECTION 33-I TOWNSHIP 3 RANGE 1W

FORM 1-S.T.C.—ROBERTS & SON, BIRMINGHAM



- 58A - Move-Rite, Inc - 86
- 59 - Move-Rite, Inc - 86
- 60 - Move-Rite, Inc - 86
- 61 - Rod's Custom - 86
- 62 - Bragg, Henry V - 86
- 63 - Oldfield, Ronnie W - 86
- 63A - Inseho's Mechanical Contractors - 86
- 64 - Inseho Mechanical Contractors - 86
- 65A - Clatts, Wayne Etal - 86
- 66 - Burleson Pool Co. Inc - 86
- 66A - Audeh, N.F. Etal - 86
- 67 - Anderson, Tommy Motors, Inc - 86
- 68 - Rice, Emmett W - 86
- 69 - Rice, Emmett W - 86
- 70 - Jones, G.W.'s Sons Rental - 86
- 71 - Gowan, Billy Joe Etal - 86
- 72 - Rice, Emmett - 86
- 73 - Pettus, Dr Joe A III - 86
- 73A - Jones, G.W.'s Sons, Rental - 86
- 74 - McClellan, Wilson S Etal - 86
- 74A - McClellan, Wilson S Etal - 86
- 75 - Jones, G.W.'s Sons - Rental - 86

- 1 - Mullins A-1 Rent ALL, Inc - 86
- 1A - Mullins A-1 Rent ALL, Inc - 86
- 2 - Moore, Warren C Etal - 86
- 3 - Moore, Warren C Jr - 86
- 4 - Ruggles, Donald Etal - 86
- 5 - Shannon, Eugene Etal - 86
- 5A - Moore, Warren C Jr - 86
- 6 - Shannon Bros Tile, Inc - 86
- 7 - Audeh, Nadeen F Etal - 86
- 7A - Shannon Bros Title, Inc - 86
- 7B - Kassim, Anis F - 86
- 8 - AMA, Inc - 86
- 9 - AMA, Inc - 86
- 10 - Moudy, Robert - 86
- 11A - Move-Rite, Inc - 86
- 12 - Trenkle, Robert A - 86
- 13 - City Investment LTD - 86
- 14 - Putman Const. & Realty, Inc - 86
- 15 - Chesser, Jerry J - 86
- 16 - White, John A Etal - 86 - Jimmy W. Campbell 1/2 Int - 89
- 17 - Caldwell, Charles A - 86
- 18 - Caldwell, Charles A - 86
- 18A - CSB Leasing Co., Inc - 86
- 18B -
- 19 - CSB Leasing Co., Inc - 86

- 37 - Kheir, Naim A Etal - 86
- 38 - Bragg, Henry V. Etal - 86
- 38A - Lowe's Investment Corp - 86
- 39 - Whisenant, Kathryn - 86
- 39A - Bragg, Henry V Etal - 86
- 40 - Dasher & Knight - 86
- 42 - Jones, G.W.'s Sons Rental - 86
- 43 - Browning Ferris Ind, Inc - 86
- 44 - Stone, Meriweather Etal - 86
- 45 - Parent Enterprises - 86
- 45A - American Housing Corp of AL - 86
- 46 - Putman Const. & Realty - 86
- 46A - CSB Leasing, Inc - 86
- 47 - M^{rs} Cormick, Edward Etal - 86
- 47A - M^{rs} Cormick, Edward Etal - 86
- 48 - Hanback, Ralph D Etal - 86
- 49 - CSB Leasing, Inc - 86
- 49A - CSB Leasing, Inc - 86
- 50 - CSB Leasing, Inc - 86
- 51 - S: P Inc - 1986
- 52 - Caldwell, Helen P - 86
- 53A - K.D.W. Investments LTD - 86
- 54 - Wilson, Kenneth D - 86
- 55 - Thurstone, Robert L - 86
- 56 - Ballard, J. B. Jr Etal - 86
- 56A - Watkins, Engineers & Const. - 86
- 57 - Holley, Thomas Etal - 86
- 58 - Putman Const. & Realty - 86
- 19A - Aldridge, Warren - 86
- 20 - Caldwell Const., Inc - 86
- 21 - Pope, Paul Jr - 86
- 22 - Fambrough, Ray A Etal - 86
- 22A - Caldwell, Charles A - 86
- 23 - Putman Const. & Realty - 86
- 23A - CSB Leasing, Inc - 86
- 24 - Houser, John E - 86
- 24A - Houser, John E - 86 754/1105
- 25 - Putman Const. & Realty - 86
- 25A - Ballard, Eulie L - 86
- 26 - Lance, Inc - 86
- 27 - M^{rs} Cormick & Swafford - 86
- 28 - Peterson, Allen D - 86
- 28A - Peterson, Allen D - 86
- 29 - Dykes, C. H. - 86
- 30 - Dykes, C. H. - 86
- 31 - Dykes Restaurant Supply - 86
- 32 - Sanders Cleaners, Inc - 86
- 33 - Coshatt, Bobby F Etal - 86
- 34 - M^{rs} Cormick & Swafford - 86
- 35 - Bragg, Henry V - 86

COUNTY MADISON