

SECTION

23

TOWNSHIP

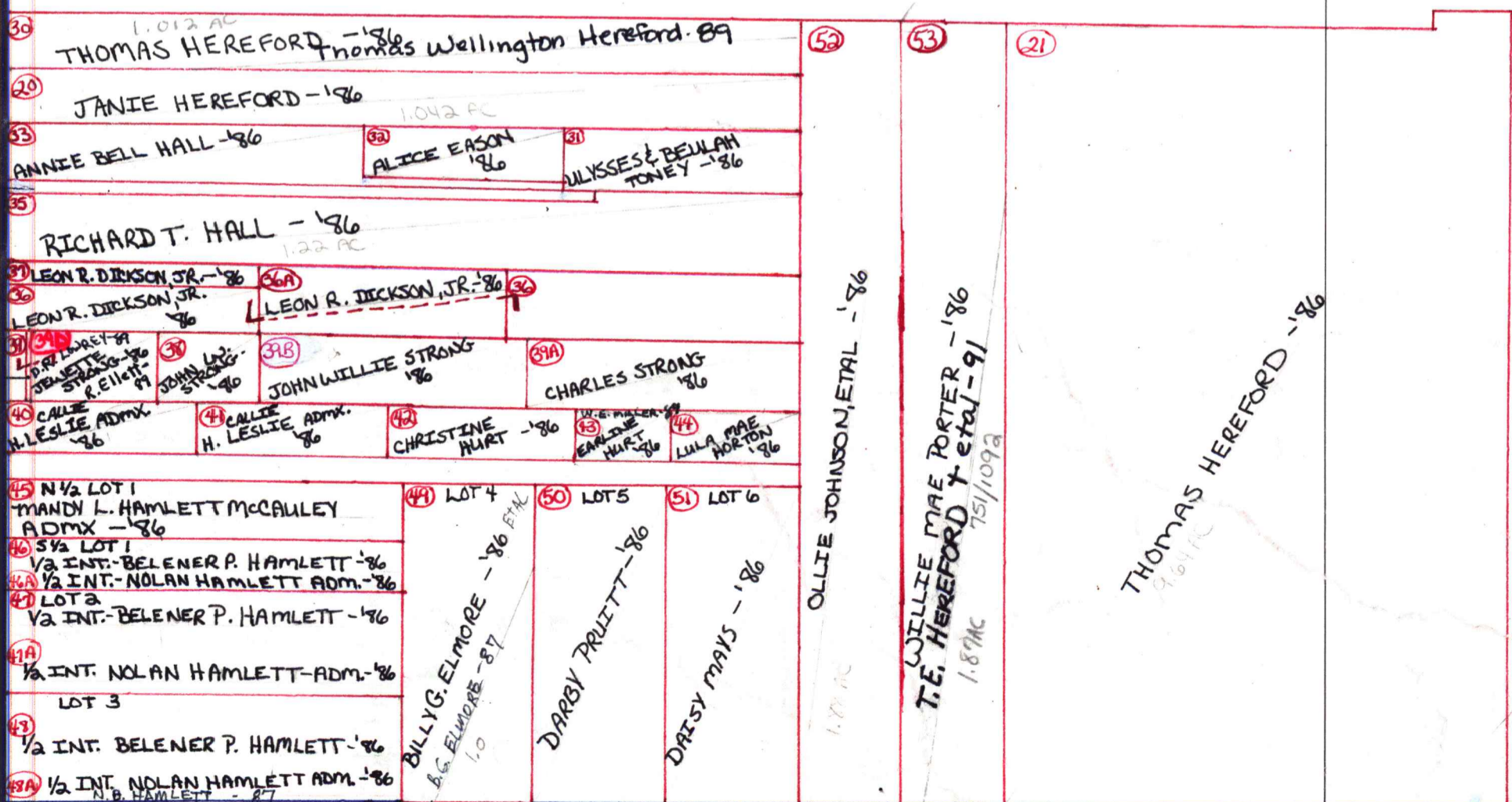
3

RANGE

1W

FORM 1—S.T.C.—ROBERTS & SON, BIRMINGHAM

S PORTION OF  
SW 1/4  
OF  
NE 1/4  
&  
PART OF  
SE 1/4  
NE 1/4



BLUE SPRING RD.

COUNTY MADISON

SE 1/4 of NE 1/4

BILLY G. ELMORE - '86

39D P.H. Beauvais III - '90  
39A A. ELLETT - '89  
39C CITY OF H'VILLE

MUN 02 - City - 11.1

NE 1/4 of NE 1/4