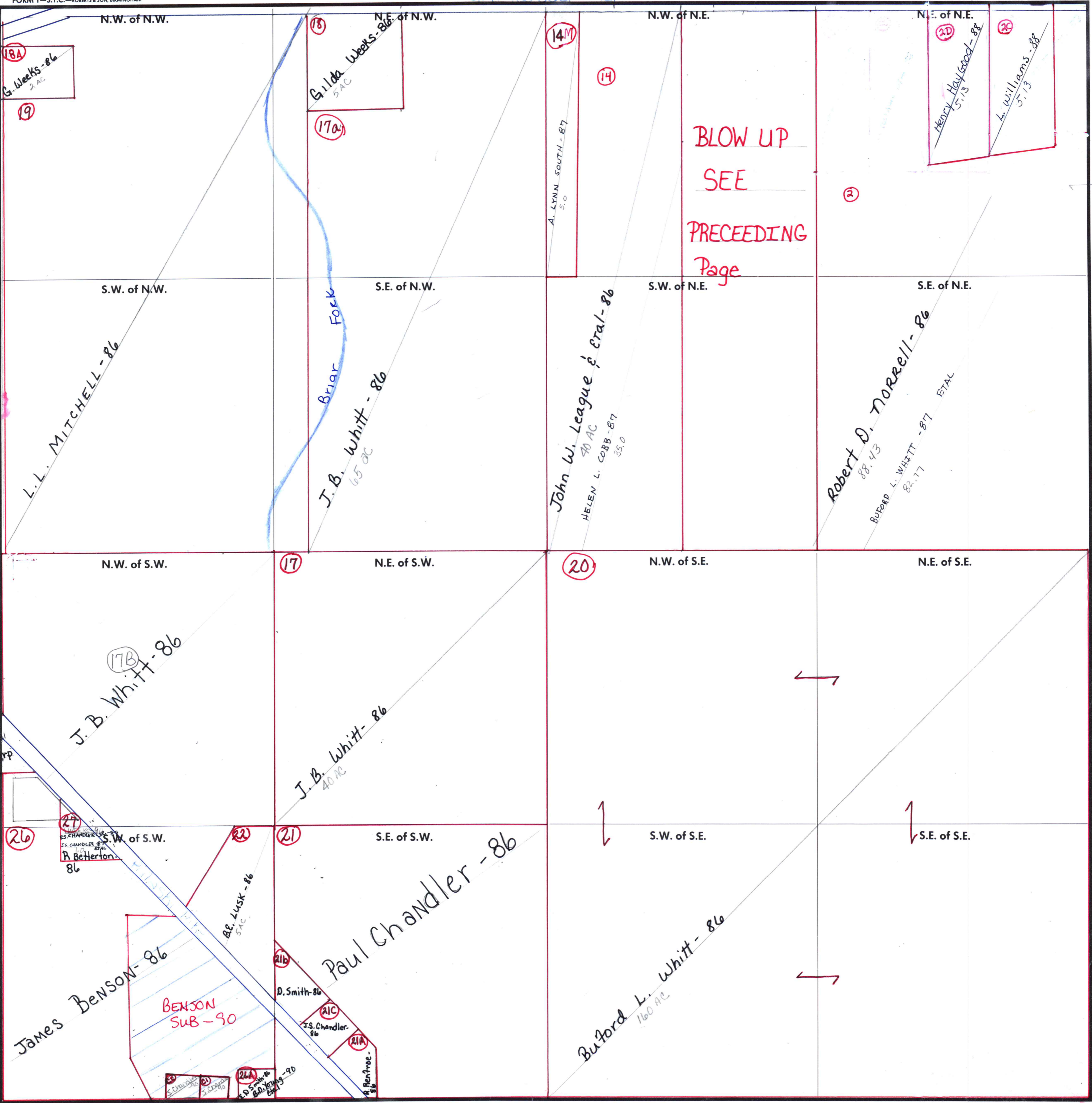


SECTION 5

TOWNSHIP 2
Mun 01 - Madison Co
Grimwood Rd

RANGE 1W

FORM 1-S.T.C.-ROBERTS & SON, BIRMINGHAM



W. H. Jones - 86

18A
G. Weeks - 86
2 AC

17B
Gilda Weeks - 86
5 AC

14M

A. LYNN SOUTH - 87
5.0

20
Henry Haywood - 88
5.13

26
L. Williams - 88
5.13

BLOW UP
SEE
PRECEDING
Page

L. L. MITCHELL - 86

J. B. Whitt - 86
65 AC

John W. League & Etal - 86
50 AC
HELEN L. COBB - 87
35.0

Robert D. Norrell - 86
88.43
BURFORD L. WHITT - 87
82.77 ETAL

17B
J. B. Whitt - 86

J. B. Whitt - 86
40 AC

20

16A
Michael Sharp
M. Sharp
86

27
P. BeHerton - 86

22
B. E. Lusk - 86
5 AC

21

Paul Chandler - 86

James Benson - 86

BENSON
SUB - 90

D. Smith - 86

J. S. Chandler - 86

J. Renfro - 86

Burford L. Whitt - 86
160 AC

COUNTY MADISON

Scale - 1 inch = 300 Ft.

CONT IN
2-1W-4