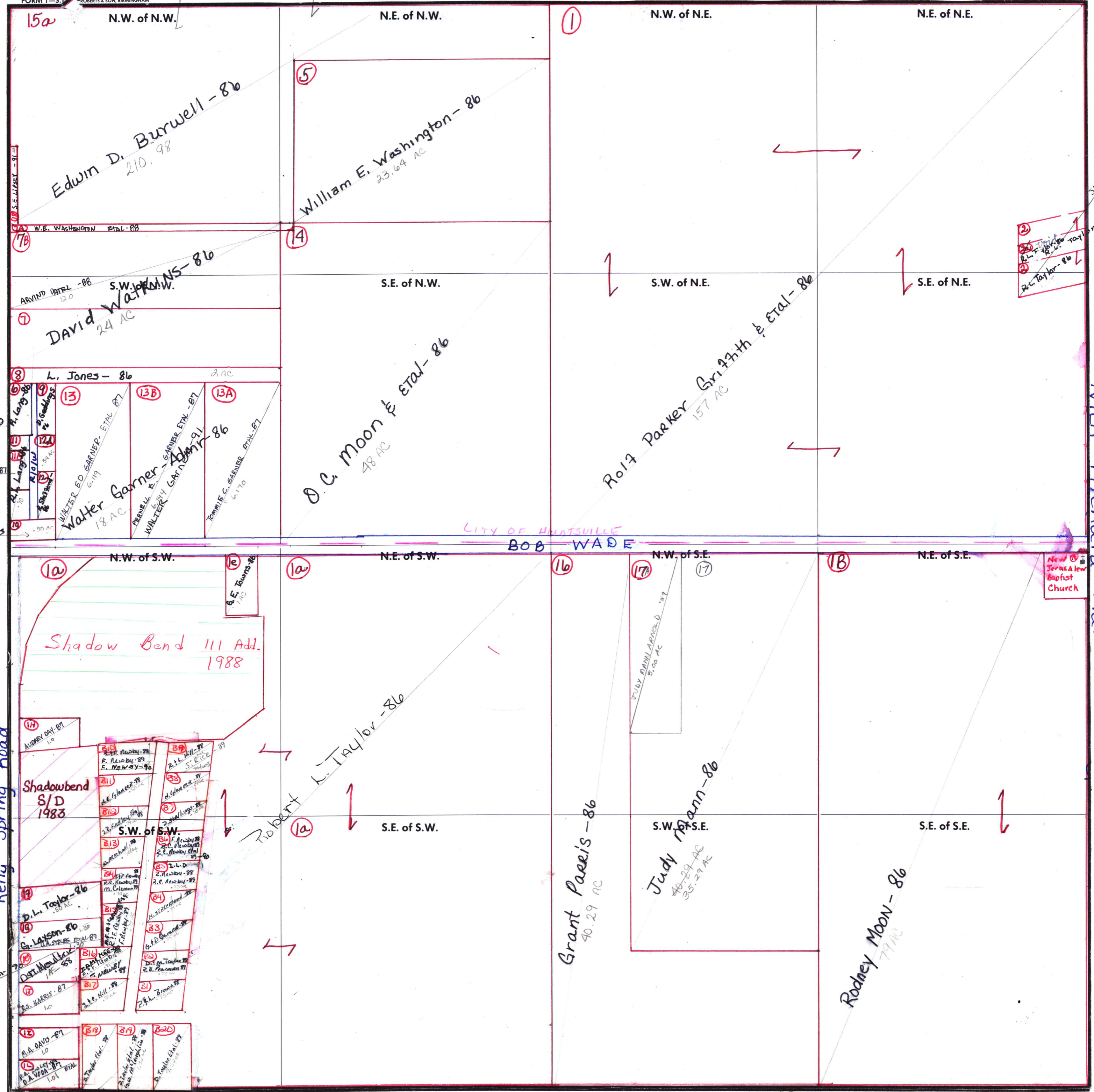


Mun 01 - Madison Co.  
Mun 02 - City of Huntsville

SECTION **31** TOWNSHIP **2** RANGE **1W**

FORM 1-S.T. - ROBERTS & SON, BIRMINGHAM

carried in  
2-1W-30



(12A) D.R. Geddings - 90  
#12a D. Geddings 186  
(11A) E. Brock - 88  
WILHE R. ALLEN ETAL - 87  
#10 R.E. Geddings 86

(2)  
(3)  
(4)  
R.L. Taylor - 90  
R.L. Taylor - 86

ST Mansell - 90  
2.50 AC

Nick Fitchard Rd.

New @ Texas New Baptist Church

Scale - 1 inch = 300 Ft.

COUNTY MADISON

2-1W-31.00 - 8  
SHADOW BEND II UNREC PLAT  
FROM  
2-1W-31.00\* 1A