

Municipal - City of Huntsville

SECTION **30**

TOWNSHIP **2**

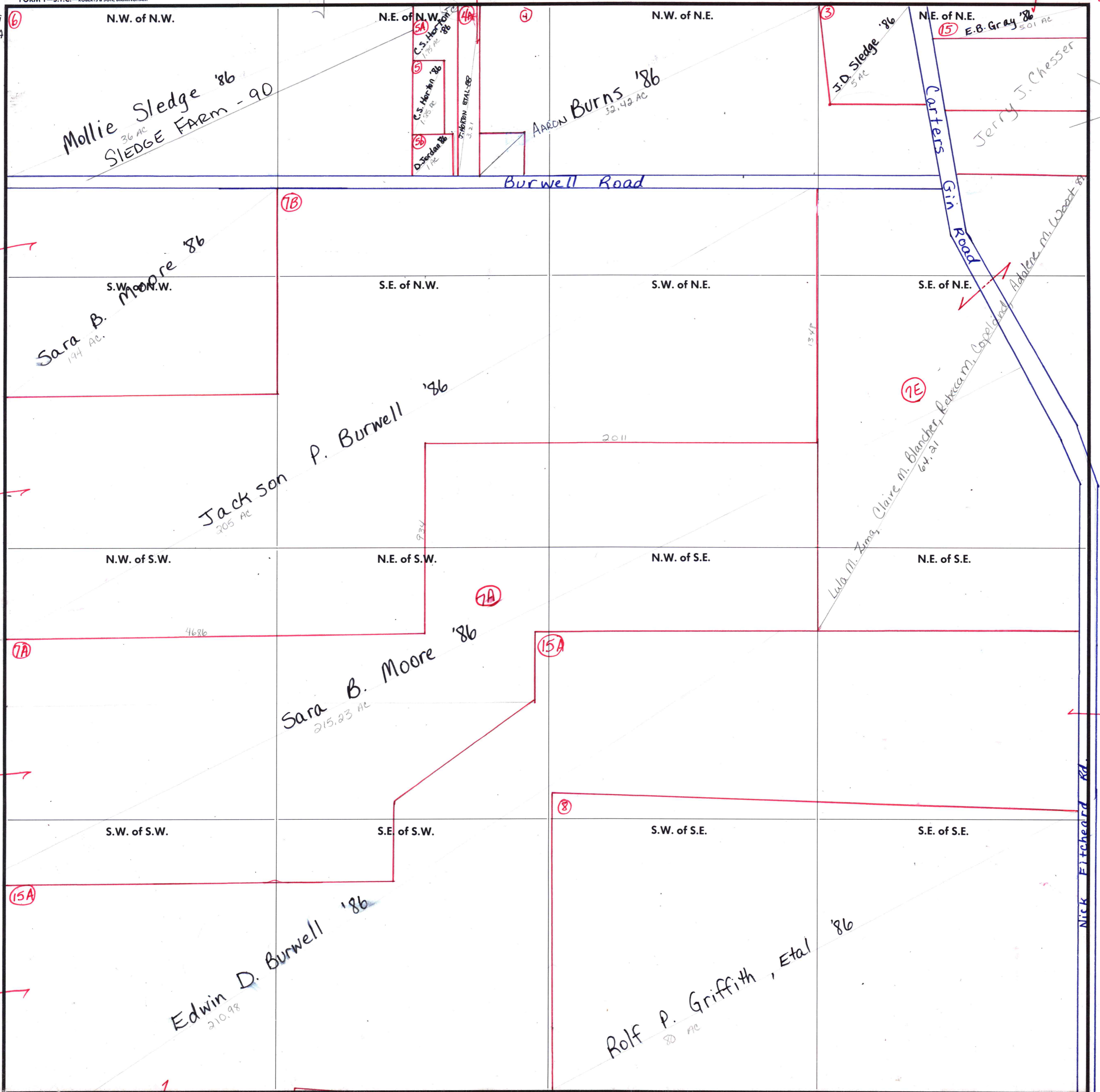
RANGE **25 W**

FORM 1-S.T.C.—ROBERTS & SON, BIRMINGHAM

50 Cynthia Scruggs - 10A

carried in 2-1W-19

carried in 2-1W-20 parcel 4



2-2W-24
2-2W-25

2-2W-25

2-2W-25

2-2W-25

2-1W-29

COUNTY MADISON

2-1W-31

Scale - 1 inch = 300 Ft.