

# Blow Up of N 1/2 of S.E. 1/4

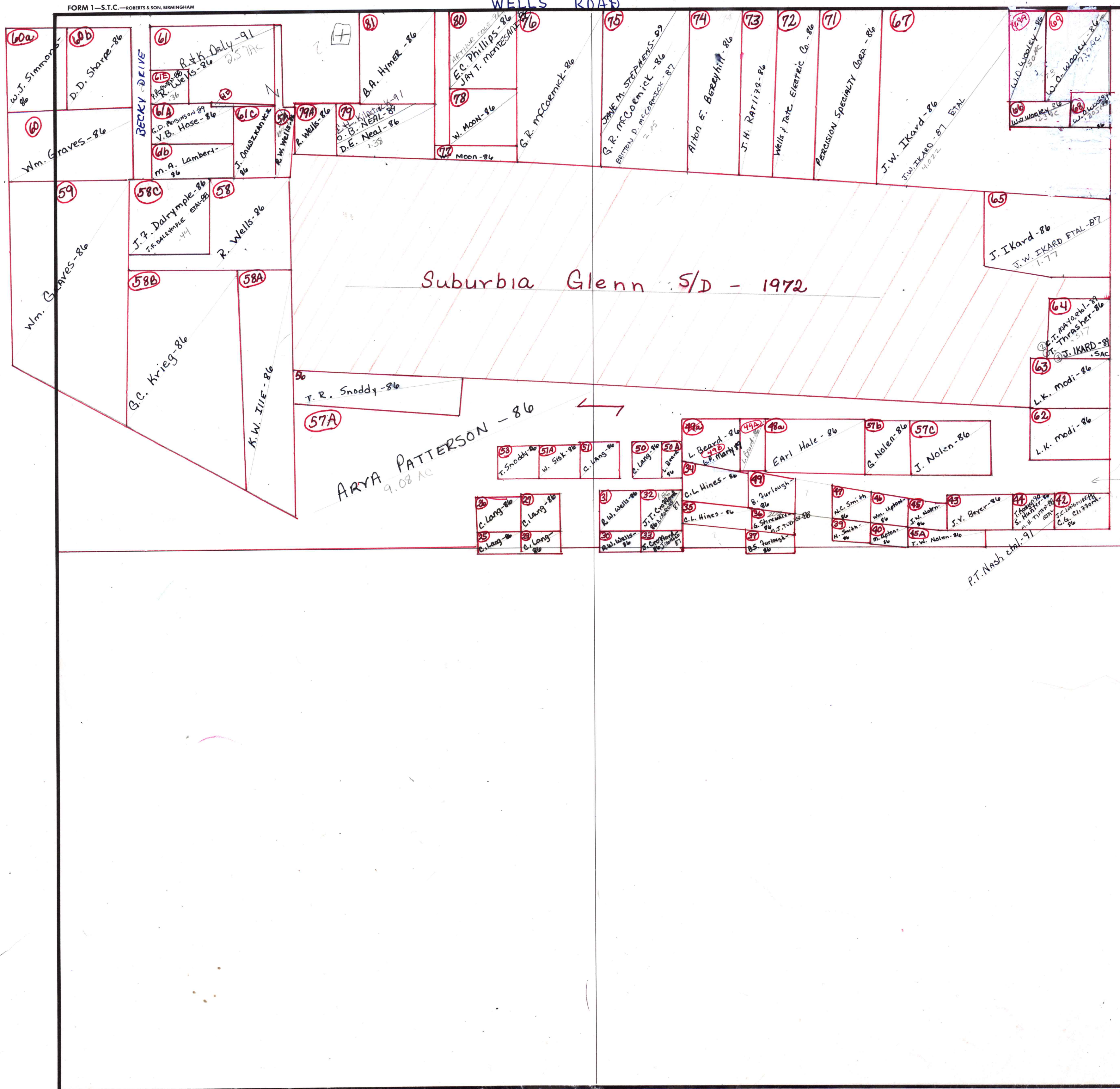
mun 01- madison, co

SECTION 24

TOWNSHIP 2

RANGE 1W

FORM 1-S.T.C.-ROBERTS & SON, BIRMINGHAM



Suburbia Glenn S/D - 1972

ARYA PATTERSON - 86  
9.08 AC

P.T. Nash chd. 91

Patterson Rd