

SECTION

17

TOWNSHIP

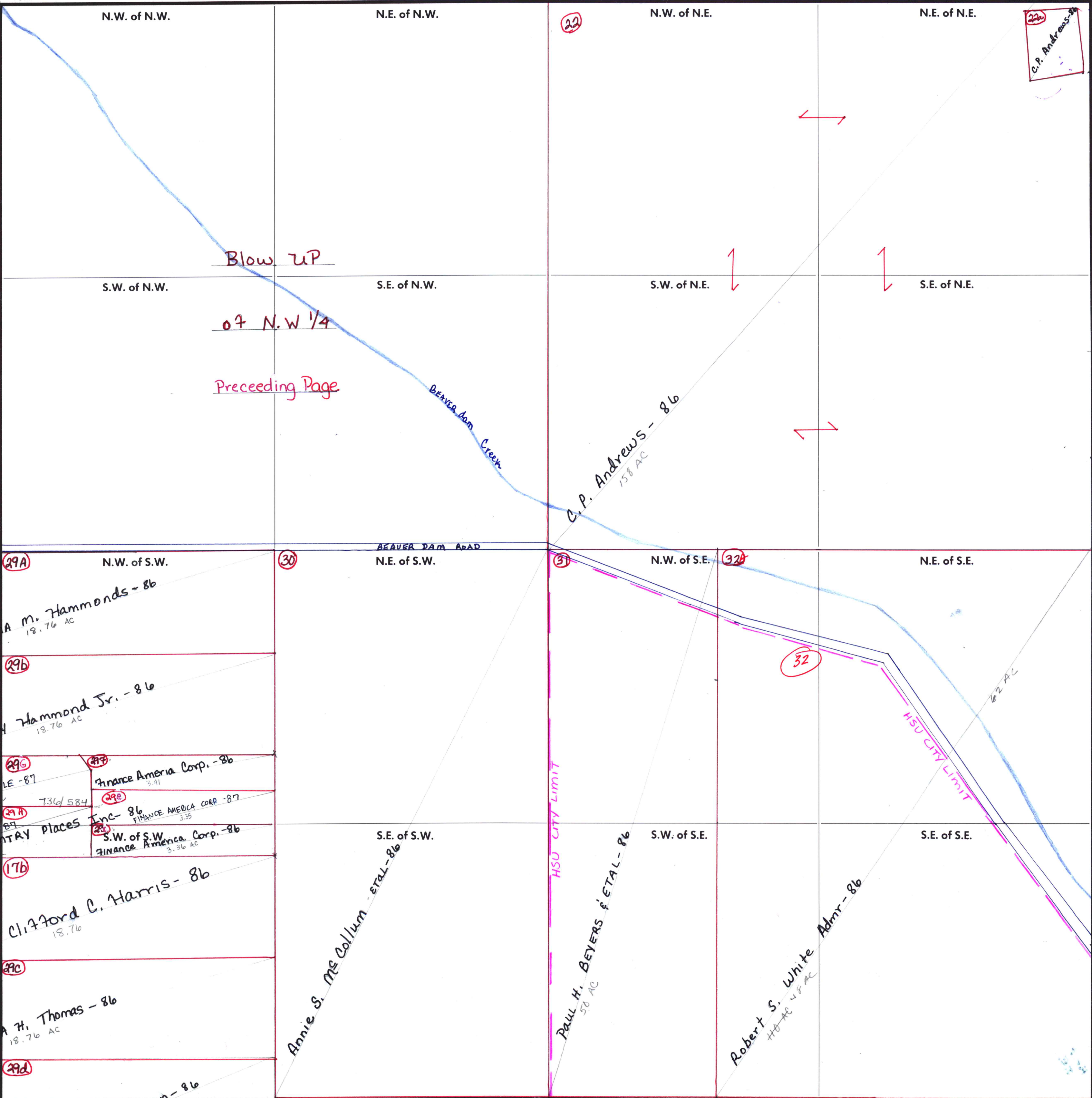
2

RANGE

1W

FORM 1-S.T.C.-ROBERTS & SON, BIRMINGHAM

Mun 01 - Madison Co
Mun 02 - City of Huntsville



Blow UP
of N.W. 1/4
Preceding Page

C.P. Andrews - 86

C.P. Andrews - 86
158 AC

29A Emma M. Hammonds - 86
18.76 AC

29B CAREY Hammond Jr. - 86
18.76 AC

29C TERRY W. GENTLE - 87
4.00 AC

29D Finance America Corp. - 86
3.91 AC

29A O.S. GENTLE - 87
4.00 AC

29B FINANCE AMERICA CORP - 87
3.35 AC

29C S.W. of S.W. Finance America Corp. - 86
3.36 AC

17B Clifford C. Harris - 86
18.76 AC

29C LENA H. Thomas - 86
18.76 AC

Annie S. McCallum ETAL - 86
50 AC

PAUL H. BEYERS ETAL - 86
50 AC

Robert S. White Admr - 86
48 AC

29D Hayward Robinson - 86
18.76 AC

COUNTY MADISON

Scale - 1 inch = 300 Ft.

cont in 2-1W-18

carried in 2-1W-18

PALASKI PIKE

Parcel #32 is a municipality split