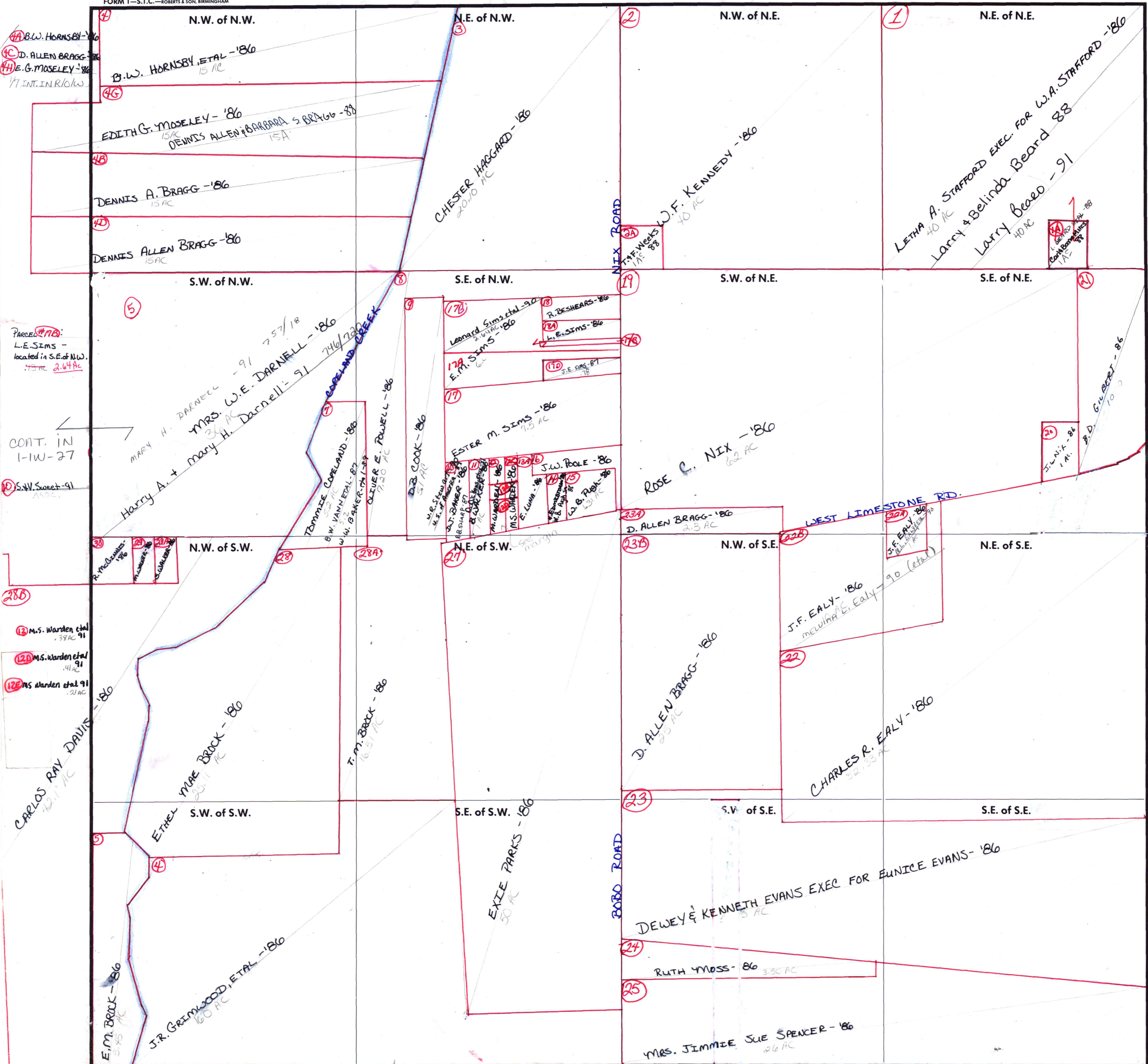


FORM 1-S.T.C.-ROBERTS & SON, BIRMINGHAM



PARCEL #17B:
L.E. SIMS -
located in S.E. of NW.
.15 AC 2.64 AC

CONT. IN
1-1W-27

S.W. Sweet-91

R. McBratton-186
M. Warden-91
M.S. Warden et al 91
M.S. Warden et al 91

CARLOS RAY DAVIS -186
42.1 AC

CARRIED
IN
2-1W-35