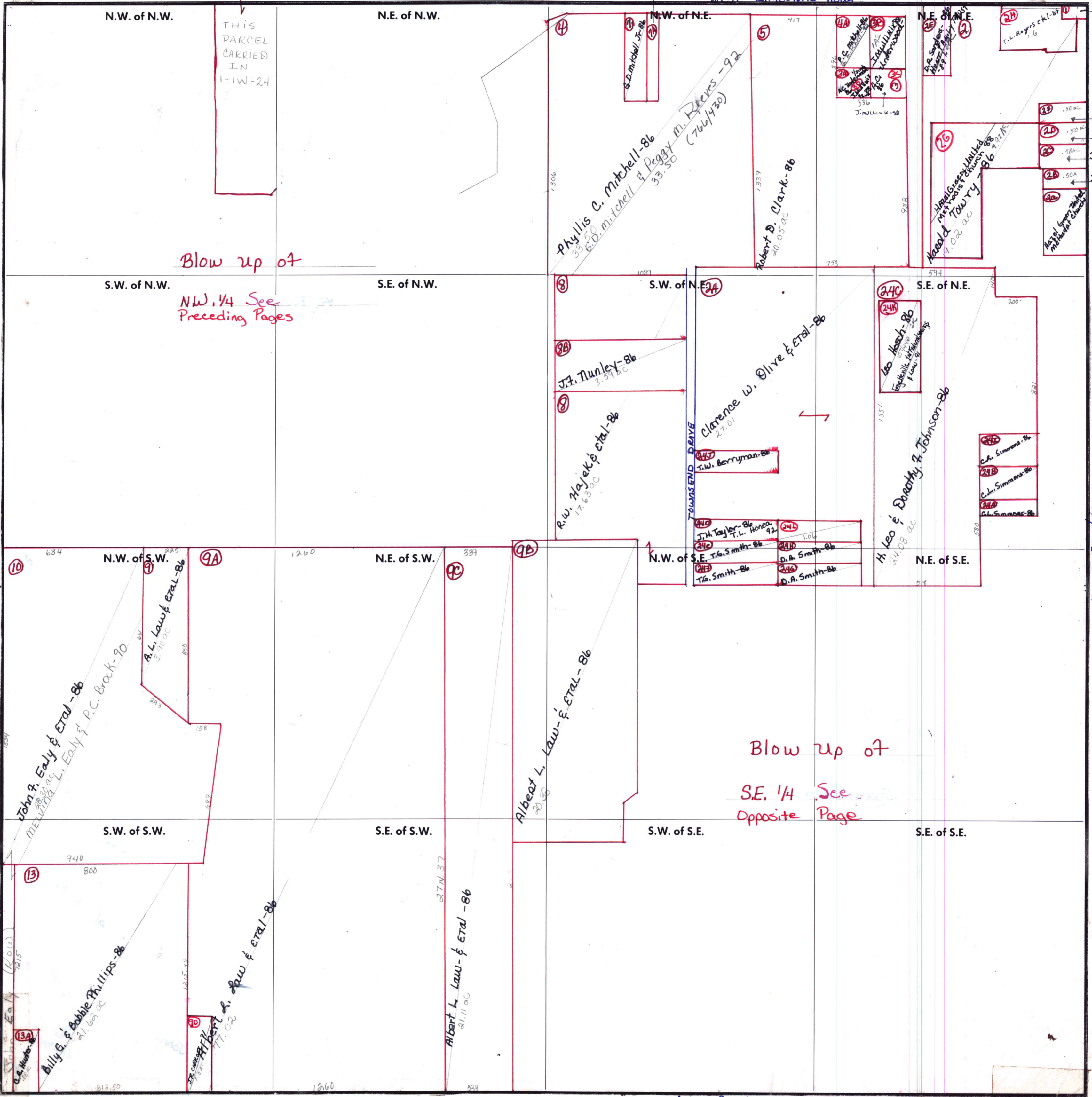


SECTION 25

mun of - madison Co
TOWNSHIP 1

RANGE 1W

FORM 1-S.T.C.-ROBERTS & SON, BIRMINGHAM



Blow up of
NW 1/4 See
Preceding Pages

Blow up of
SE 1/4 See
Opposite Page

E.L. Johnston '86

Larry M. Brady & Etal '86

Larry M. Brady Etal '86

James Brazier & Etal '86

J.D. McDougal & Etal '86

Hwy 231/431

COUNTY MADISON

Scale - 1 inch = 300 Ft. Kinnard Mill Road