

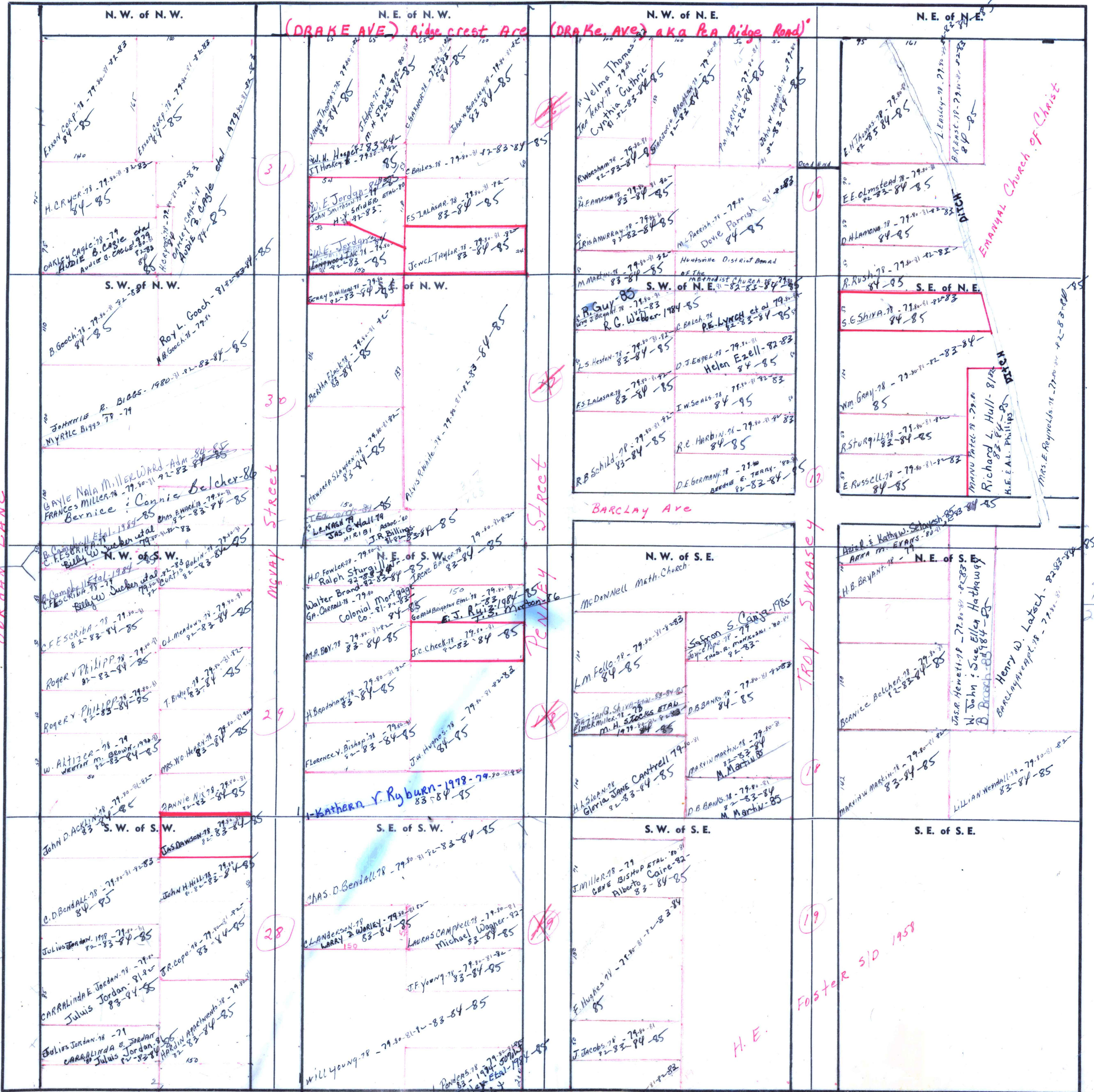
NW 1/4 OF NW 1/4

SECTION 15

TOWNSHIP 4

RANGE 1 W

FORM 1-S.T.C.-ROBERTS & SON, BIRMINGHAM



74 07 29 & 30  
M. S. K. F. F. ROAD RA. F. C. - 85

Jordan Lane

McVay Street

Penney Street

Barclay Ave

Troy Sweeney

Foster S/D 1958

EMMANUEL Church of Christ

COUNTY

Scale - 1 inch = 300 Ft.

910  
3470  
1320  
234