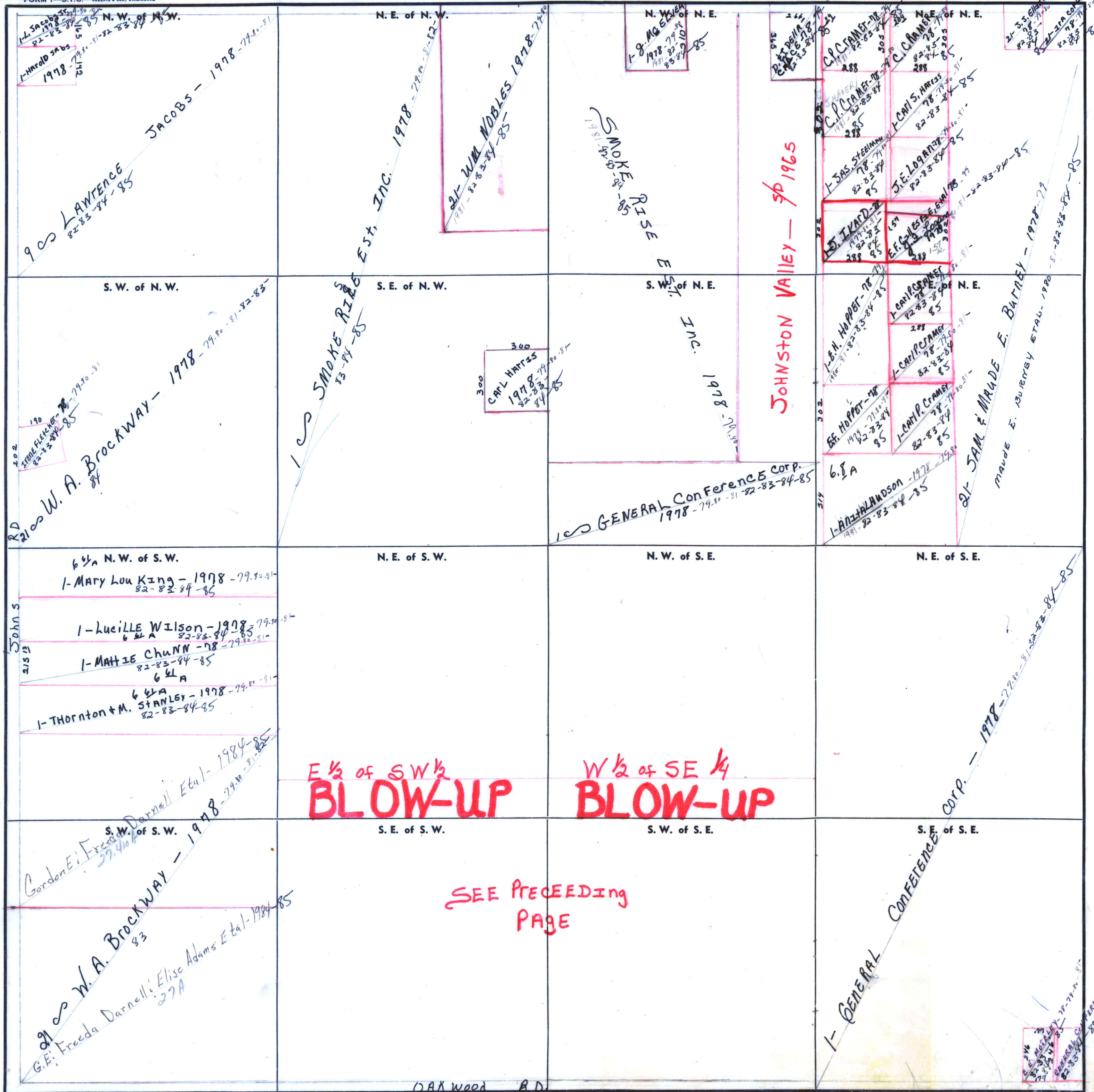


FORM 1 - S.T.C. - ROBERTS & SON, BIRMINGHAM



9  $\infty$  LAWRENCE  
82-83-84-85

JACOBS - 1978-79-80-81

N.W. of N.W.

1- HAROLD JACOBS  
1978-79-80-81-82-83-84-85

N.E. of N.W.

21- WM NOBLES 1978-79-80-81

SMOKE RISE EST. INC. 1978-79-80-81-82-83-84-85

N.W. of N.E.

1-8 MCGEE  
1978-79-80-81-82-83-84-85

SMOKE RISE EST. INC. 1978-79-80-81-82-83-84-85

JOHNSTON VALLEY - 3/1965

N.E. of N.E.

C.P. CRAMER-78  
82-83-84-85

C.P. CRAMER-79  
82-83-84-85

L. CARL HOPPER-78  
82-83-84-85

L. CARL HOPPER-79  
82-83-84-85

L. CARL HOPPER-80  
82-83-84-85

L. CARL HOPPER-81  
82-83-84-85

L. CARL HOPPER-82  
82-83-84-85

L. CARL HOPPER-83  
82-83-84-85

L. CARL HOPPER-84  
82-83-84-85

L. CARL HOPPER-85  
82-83-84-85

L. CARL HOPPER-86  
82-83-84-85

L. CARL HOPPER-87  
82-83-84-85

L. CARL HOPPER-88  
82-83-84-85

L. CARL HOPPER-89  
82-83-84-85

L. CARL HOPPER-90  
82-83-84-85

L. CARL HOPPER-91  
82-83-84-85

L. CARL HOPPER-92  
82-83-84-85

L. CARL HOPPER-93  
82-83-84-85

L. CARL HOPPER-94  
82-83-84-85

L. CARL HOPPER-95  
82-83-84-85

L. CARL HOPPER-96  
82-83-84-85

L. CARL HOPPER-97  
82-83-84-85

L. CARL HOPPER-98  
82-83-84-85

L. CARL HOPPER-99  
82-83-84-85

L. CARL HOPPER-00  
82-83-84-85

S.W. of N.W.

1  $\infty$  W.A. BROCKWAY - 1978-79-80-81-82-83-84-85

SMOKE RISE EST. INC. 1978-79-80-81-82-83-84-85

300  
CARL HOPPER  
1978-79-80-81-82-83-84-85

S.E. of N.W.

1  $\infty$  W.A. BROCKWAY - 1978-79-80-81-82-83-84-85

SMOKE RISE EST. INC. 1978-79-80-81-82-83-84-85

300  
CARL HOPPER  
1978-79-80-81-82-83-84-85

S.W. of N.E.

1  $\infty$  GENERAL CONFERENCE CORP. 1978-79-80-81-82-83-84-85

JOHNSTON VALLEY - 3/1965

N.E. of N.E.

L. CARL HOPPER-78  
82-83-84-85

L. CARL HOPPER-79  
82-83-84-85

L. CARL HOPPER-80  
82-83-84-85

L. CARL HOPPER-81  
82-83-84-85

L. CARL HOPPER-82  
82-83-84-85

L. CARL HOPPER-83  
82-83-84-85

L. CARL HOPPER-84  
82-83-84-85

L. CARL HOPPER-85  
82-83-84-85

L. CARL HOPPER-86  
82-83-84-85

L. CARL HOPPER-87  
82-83-84-85

L. CARL HOPPER-88  
82-83-84-85

L. CARL HOPPER-89  
82-83-84-85

L. CARL HOPPER-90  
82-83-84-85

L. CARL HOPPER-91  
82-83-84-85

L. CARL HOPPER-92  
82-83-84-85

L. CARL HOPPER-93  
82-83-84-85

L. CARL HOPPER-94  
82-83-84-85

L. CARL HOPPER-95  
82-83-84-85

L. CARL HOPPER-96  
82-83-84-85

L. CARL HOPPER-97  
82-83-84-85

L. CARL HOPPER-98  
82-83-84-85

L. CARL HOPPER-99  
82-83-84-85

L. CARL HOPPER-00  
82-83-84-85

6  $\frac{1}{4}$  N.W. of S.W.

1- MARY LOU KING - 1978-79-80-81-82-83-84-85

1- LUCILLE WILSON - 1978-79-80-81-82-83-84-85

1- MATTIE CHANN - 78-79-80-81-82-83-84-85

1- THORNTON & M. STANLEY - 1978-79-80-81-82-83-84-85

N.E. of S.W.

E  $\frac{1}{2}$  of SW  $\frac{1}{4}$   
**BLOW-UP**

N.W. of S.E.

W  $\frac{1}{2}$  of SE  $\frac{1}{4}$   
**BLOW-UP**

N.E. of S.E.

1- GENERAL CONFERENCE CORP. - 1978-79-80-81-82-83-84-85

S.W. of S.W.

9  $\infty$  W.A. BROCKWAY - 1978-79-80-81-82-83-84-85

Gordon E. Freedg Darnell Etal - 1984-85

G.E. Freedg Darnell; Elise Adams Etal - 1984-85

S.E. of S.W.

SEE PRECEDING PAGE

DAXWOOD RD.

S.W. of S.E.

SEE PRECEDING PAGE

S.E. of S.E.

1- GENERAL CONFERENCE CORP. - 1978-79-80-81-82-83-84-85