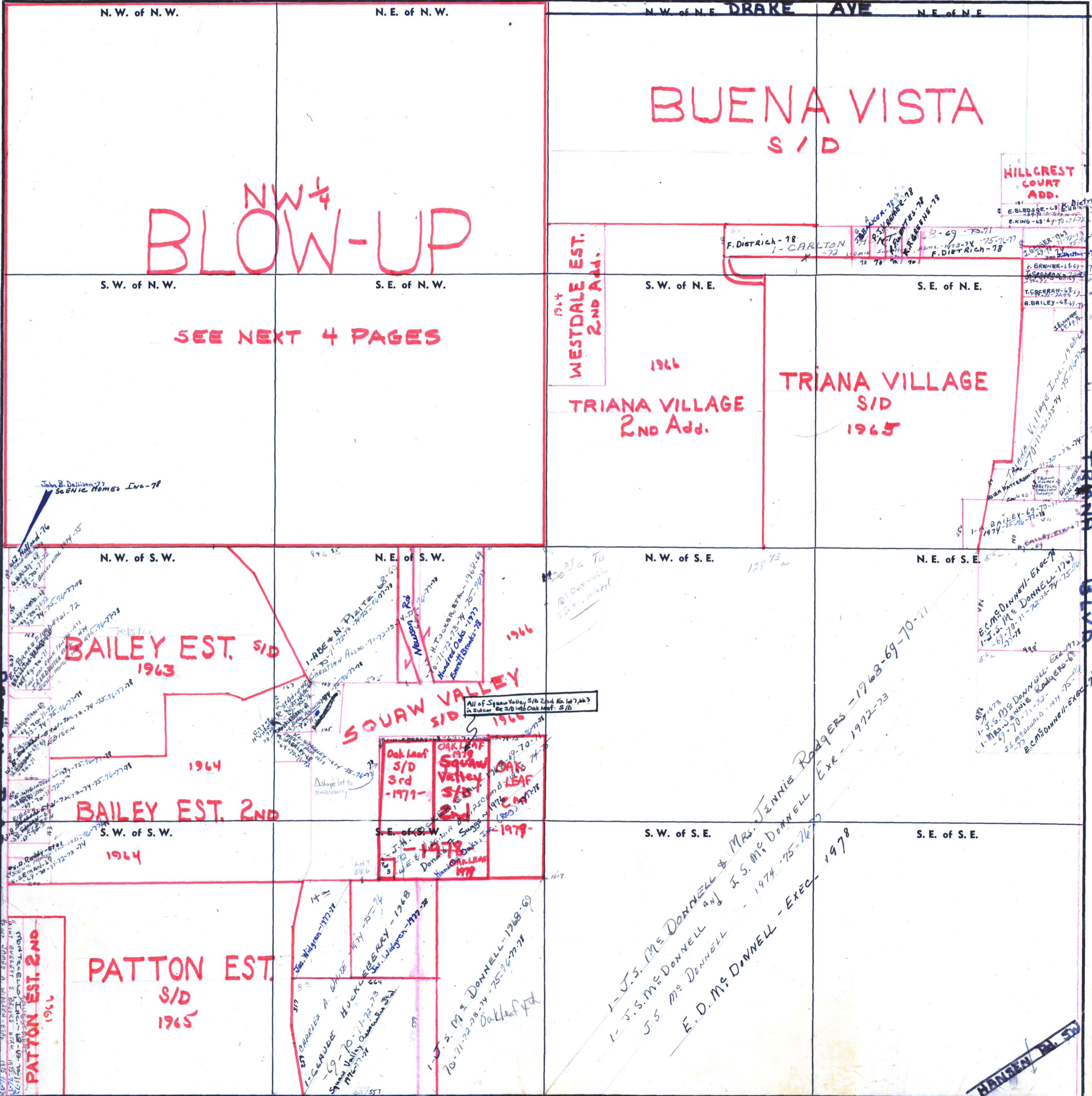


FORM 1—S.T.C.—ROBERTS & SON, BIRMINGHAM



NW 1/4  
**BLOW-UP**

**SEE NEXT 4 PAGES**

**BUENA VISTA  
S/D**

**HILLCREST  
COURT  
ADD.**

**WESTDALE EST.  
2ND ADD.**

**TRIANA VILLAGE  
2ND ADD.**

**TRIANA VILLAGE  
S/D**

**BAILEY EST. S/D**

**SQUAW VALLEY  
S/D**

**BAILEY EST. 2ND**

**OAK LEAF  
S/D  
SQUAW VALLEY  
S/D**

**PATTON EST.  
S/D**

**JENNIS RODGERS - 1968-69-70-71**  
**J.S. Mc DONNELL & MRS. J.S. Mc DONNELL**  
**J.S. Mc DONNELL**  
**E.D. Mc DONNELL - EXEC - 1978**