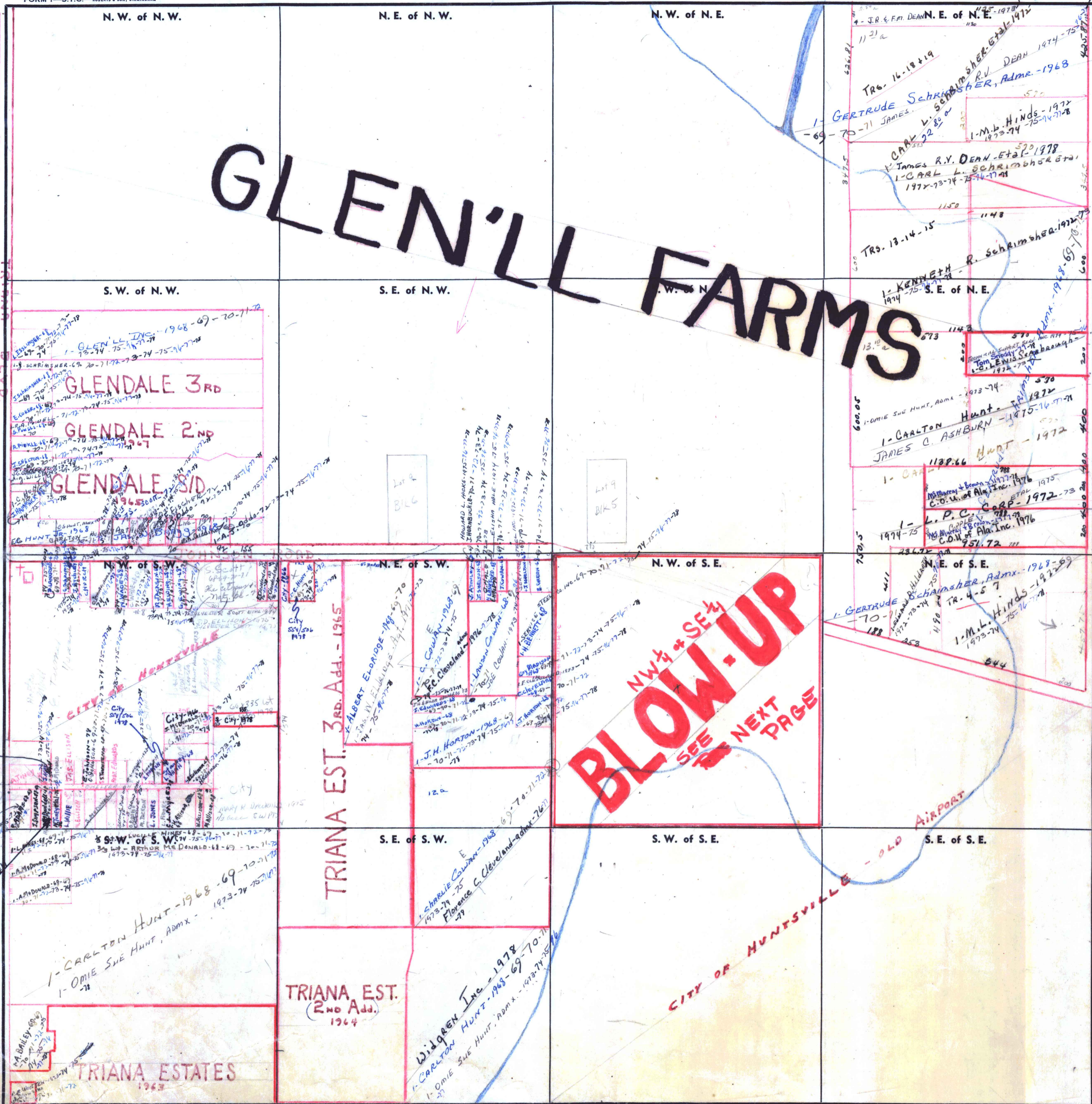


SECTION 14

TOWNSHIP 4

RANGE 1W

FORM 1—S.T.C.—ROBERTS & SON, BIRMINGHAM



# GLENVILL FARMS

## BLOW-UP SEE NEXT PAGE

GLENDALE 3RD  
GLENDALE 2ND  
GLENDALE 3RD

TRIANA EST. 3RD ADD. - 1965

TRIANA EST. 2ND ADD. 1964

TRIANA ESTATES 1963

WILGREN INC. - 1978  
CARLTON HUNT - 1968  
OMIE SUE HUNT, ADMX - 1973

GERTRUDE SCHRAMSHER, ADMX - 1968  
JAMES R.Y. DEAN ETAL - 1978  
CARL L. SCHRAMSHER ETAL - 1977  
KENNETH S.E. of N.E. - 1974  
OMIE SUE HUNT, ADMX - 1973  
CARLTON HUNT - 1972  
JAMES C. ASHBURN - 1975  
L.P.C. CORP. - 1972  
M.L. HINDS - 1972

HENRY SPIGLEY - 1978  
EDMUND - 1978

WENNINGER - 1978

WENNINGER - 1978

WENNINGER - 1978

Joseph W. Smith - 76-77-78

Scale—1 inch—300 Ft.

COUNTY