

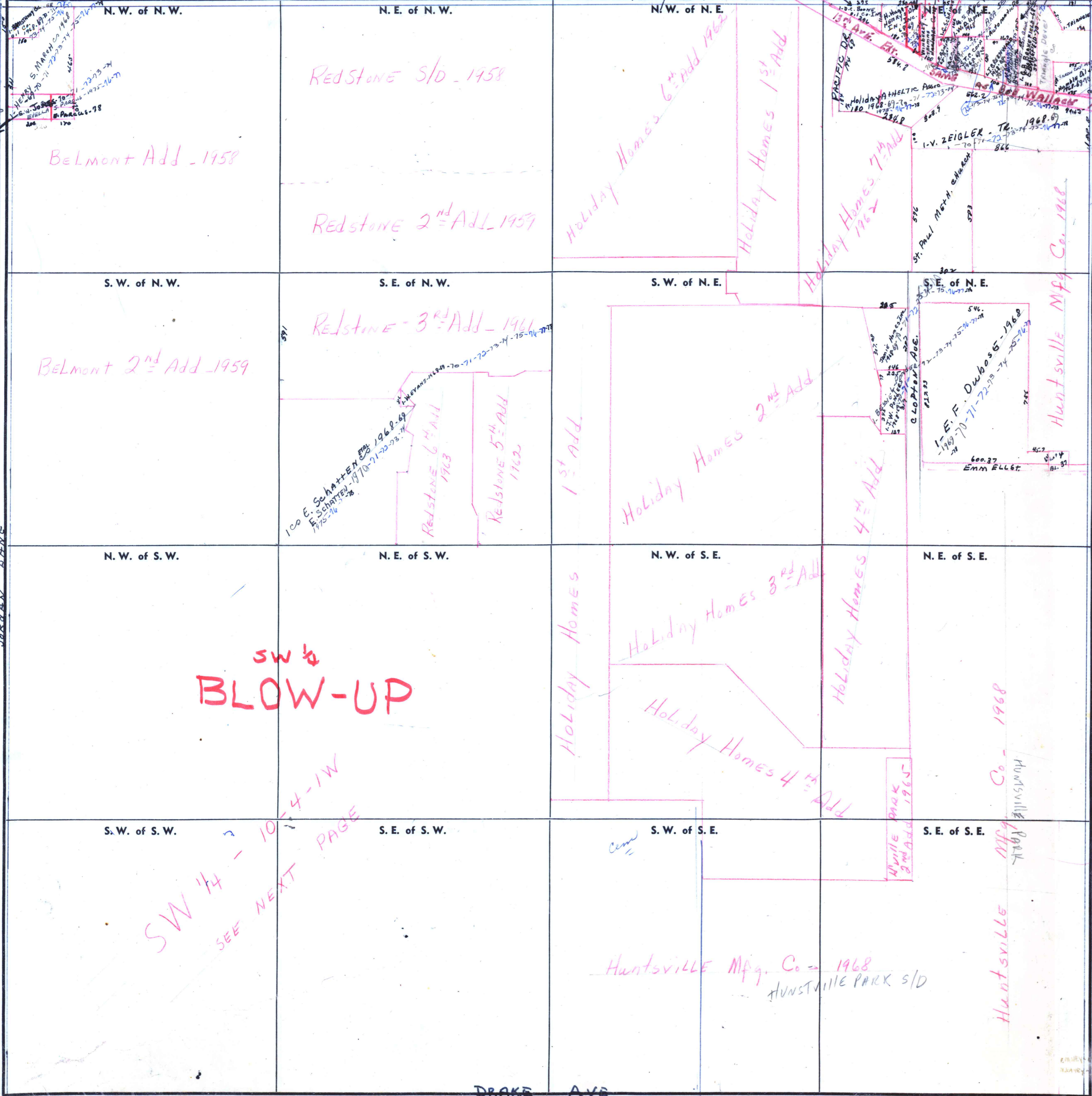
SECTION 10

TOWNSHIP 4

RANGE 4

FORM 1 - S.T.C. - ROBERTS & SON, BIRMINGHAM

MADISON PIKE (Lang Ave)



JONES, Ruffin, Blackwell - 68-69  
E. METRICANO REST. INC 78

JORDAN AVE

TRIANA PARK BLVD.

COUNTY \_\_\_\_\_

Scale - 1 inch = 300 Ft.

SERVICE 6910  
CITIES 75  
REVENUE OIL CO.  
CENTRUS Co. 19670-71-72-73  
INC 1974-75-76-77  
1968-69-70-71-72-73  
B. Benson 76  
I. Shelton 77 N. Blescoe 78

SW 1/4  
BLOW-UP

SW 1/4 - 10  
SEE NEXT PAGE

Huntsville Mfg. Co - 1968  
HUNTSVILLE PARK S/D

Huntsville Mfg Co - 1968  
Huntsville Park

Huntville Park  
2nd Add 1965

DRAKE AVE