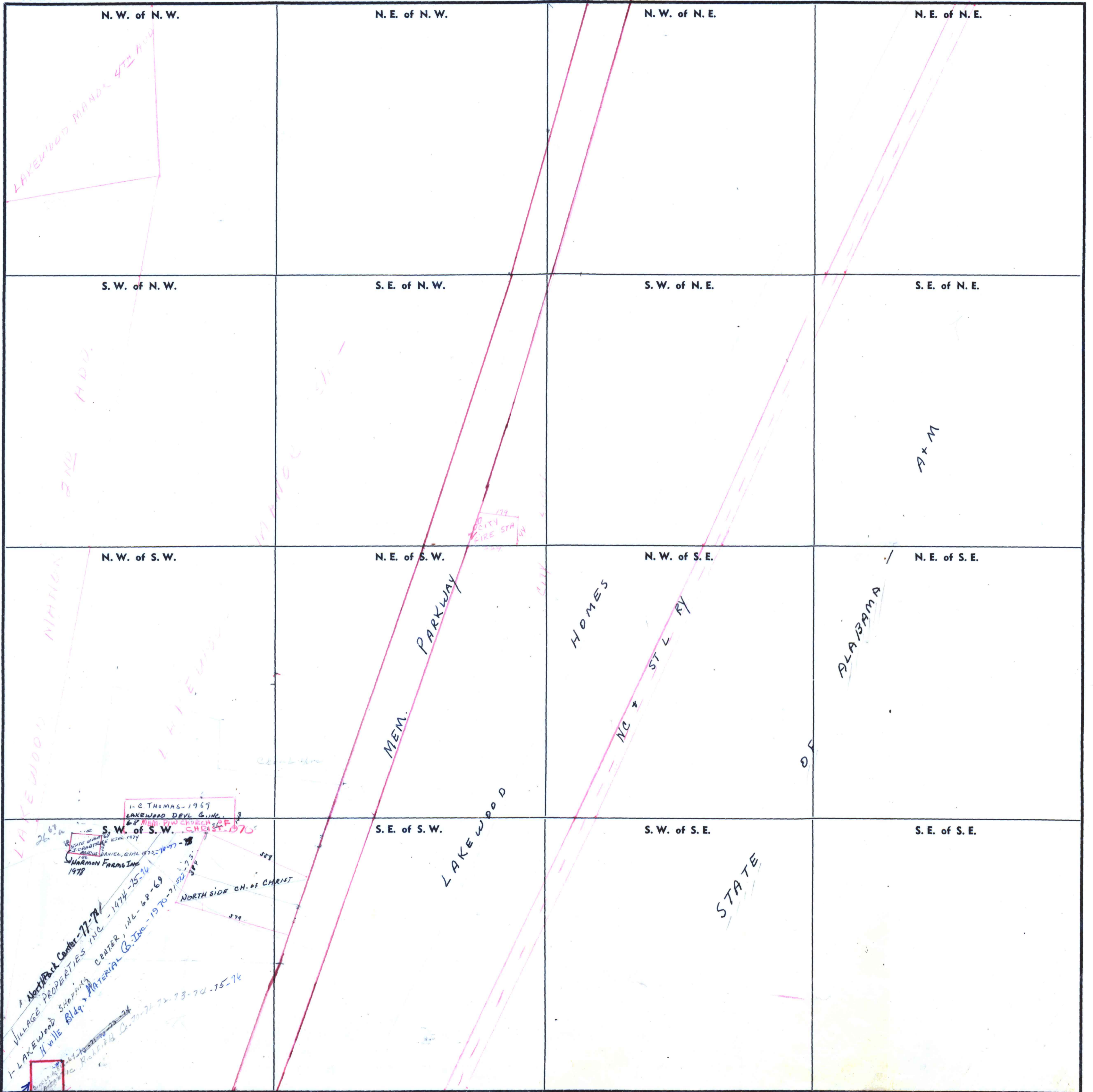


SECTION 13

TOWNSHIP 3

RANGE 1 W

FORM 1—S.T.C.—ROBERTS & SON, BIRMINGHAM



1-C THOMAS-1969  
 LAKEWOOD DEVL CO INC  
 S.W. of S.W. CH. 31-1970

26-69  
 I-C THOMAS-1969  
 LAKEWOOD DEVL CO INC  
 S.W. of S.W. CH. 31-1970  
 HARMON FARMS INC 1978  
 VILLAGE PROPERTIES INC - 1974-75-76  
 VILLAGE SHOPPING CENTER, INC - 68-69  
 LAKEWOOD HILL BLDG MATERIAL CO. INC - 1970-71-72-73-74-75-76  
 NORTH SIDE CH. OF CHRIST  
 STATE

LAKEWOOD ROAD  
 COUNTY

Scale—1 inch—300 Ft.