

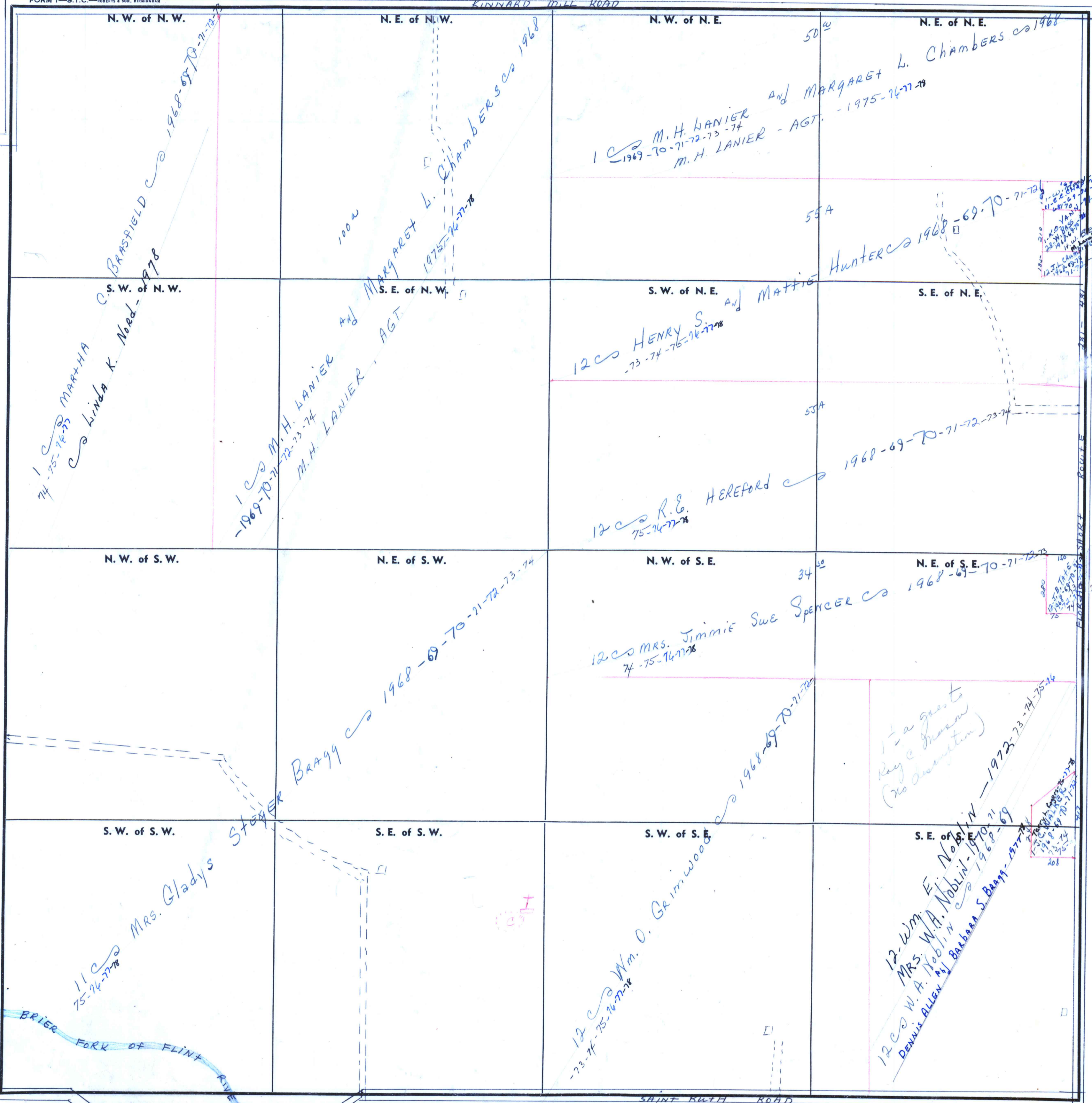
SECTION 36

TOWNSHIP 1

RANGE 1W

FORM 1—S.T.C.—ROBERTS & SON, BIRMINGHAM

KINNARD MILL ROAD



COUNTY

Scale—1 inch—300 Ft.

1-2-1W

SOUTH OF THIS SECTION

EAST OF THIS SECTION