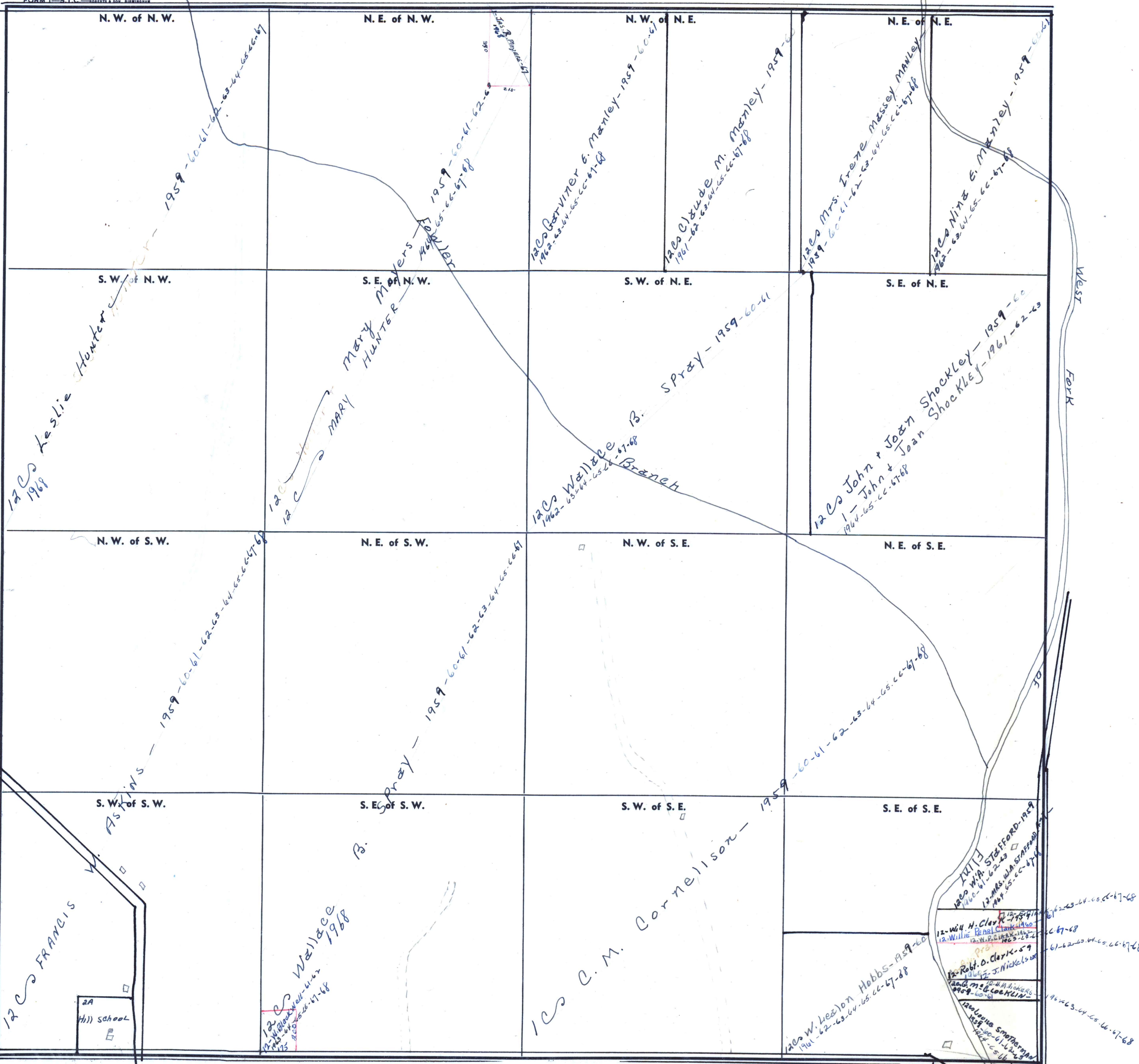


FORM 1—S.T.C.—SARASOTA & SON, BIRMINGHAM



12cs Kestlie Hunter
1969

12cs MARY Mavers Hunter
1968

12cs Wallace B. Spray
1959-60-61

12cs John & Joan Shockley
1959-60
1 - John & Joan Shockley
1961-62-63-64-65-66-67-68

2A Hill School

12cs Wallace
1968

1cs C. M. Cornelson
1959

12cs W. Lee Hobbs
1959-60

12cs W. H. Clark
1959-60
12cs Willie Renal Clark
1960-61-62-63
12cs Mrs. W. H. Stafford
1964-65-66-67-68
12cs Robt. D. Clark
1959-60
12cs J. Nickels
1961-62-63-64-65-66-67-68
12cs M. G. Locklin
1959-60-61-62-63-64-65-66-67-68
12cs Louisa Smotherman
1961-62-63-64-65-66-67-68