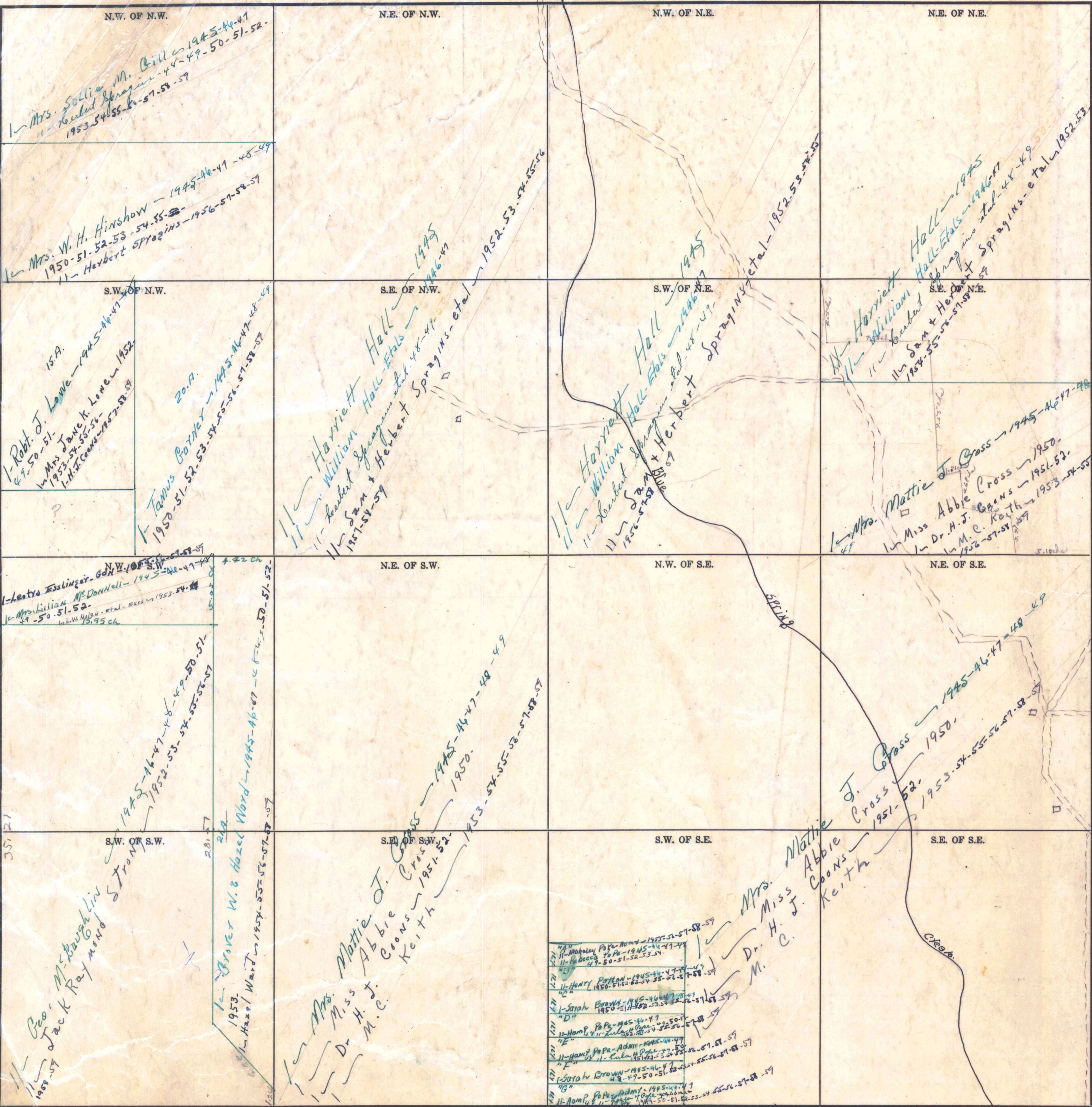


Form 1-S.T.C. © 1927 MARSHALL & CORSE CO. HARTFORD



N.W. OF N.W.
 11- Mrs. Sollie M. Bill - 1945-46-47
 Herbert Sprague - 48-49-50-51-52
 1953-54-55-56-57-58-59

N.W. OF N.W.
 11- Mrs. W. H. Hinshaw - 1945-46-47-48-49
 1950-51-52-53-54-55
 11- Herbert Sprague - 1956-57-58-59

S.W. OF N.W.
 15.A.
 1- Robt. J. Lowe - 1945-46-47
 Mrs. Jane K. Lowe - 1952
 1953-54-55-56-57-58-59
 20.A.
 1- Tamus Botney - 1945-46-47-48-49
 1950-51-52-53-54-55-56-57-58-59

S.E. OF N.W.
 11- Harriett Hall - 1945
 William Hall - 1946-47
 Herbert Sprague - 48-49
 Sam & Herbert - 1951-52-53-54-55-56-57-58-59

S.W. OF N.E.
 11- Harriett Hall - 1945
 William Hall - 1946-47
 Herbert Sprague - 48-49
 Sam & Herbert - 1951-52-53-54-55-56-57-58-59

S.E. OF N.E.
 11- Harriett Hall - 1945
 William Hall - 1946-47
 Herbert Sprague - 48-49
 Sam & Herbert - 1951-52-53-54-55-56-57-58-59

N.W. OF S.W.
 1- Leatra Esslinger - Gen W. 1945-46-47-48-49
 Mrs. Lillian McDonald - 1945-46-47-48-49
 1949-50-51-52
 W.M. Nelson - 1953-54
 1955 ch

N.E. OF S.W.
 11- Mattie J. Cross - 1945-46-47-48-49
 1950
 1953-54-55-56-57-58-59

N.W. OF S.E.
 11- Mattie J. Cross - 1945-46-47-48-49
 1950
 1953-54-55-56-57-58-59

N.E. OF S.E.
 11- Mattie J. Cross - 1945-46-47-48-49
 1950
 1953-54-55-56-57-58-59

S.W. OF S.W.
 11- Geo. M. Boushkin - 1953
 Jack Raymond - 1957-58-59
 11- Grover W. & Hazel Ward - 1954-55-56-57-58-59
 Hazel Ward - 1953-54-55-56-57-58-59

S.E. OF S.W.
 11- Mrs. Mattie J. Cross - 1945-46-47-48-49
 Miss Abbie Coons - 1951-52
 Dr. H. J. Keith - 1950

S.W. OF S.E.
 11- Mattie J. Cross - 1945-46-47-48-49
 Miss Abbie Coons - 1951-52
 Dr. H. J. Keith - 1950

S.E. OF S.E.
 11- Mattie J. Cross - 1945-46-47-48-49
 Miss Abbie Coons - 1951-52
 Dr. H. J. Keith - 1950

11- Mahaley Pa Pa - 1945-46-47-48-49
 11- Rebecca Pa Pa - 1945-46-47-48-49
 49-50-51-52-53-54
 11- Henry Patton - 1945-46-47-48-49
 1950-51-52-53-54-55-56-57-58-59
 11- Sarah Brown - 1945-46-47-48-49
 1950-51-52-53-54-55-56-57-58-59
 11- Ham P. Pa Pa - 1945-46-47-48-49
 1950-51-52-53-54-55-56-57-58-59
 11- Ham P. Pa Pa - Adm - 1945-46-47-48-49
 1950-51-52-53-54-55-56-57-58-59
 11- Sotoy Brown - 1945-46-47-48-49
 1950-51-52-53-54-55-56-57-58-59
 11- Ham P. Pa Pa - Adm - 1945-46-47-48-49
 1950-51-52-53-54-55-56-57-58-59