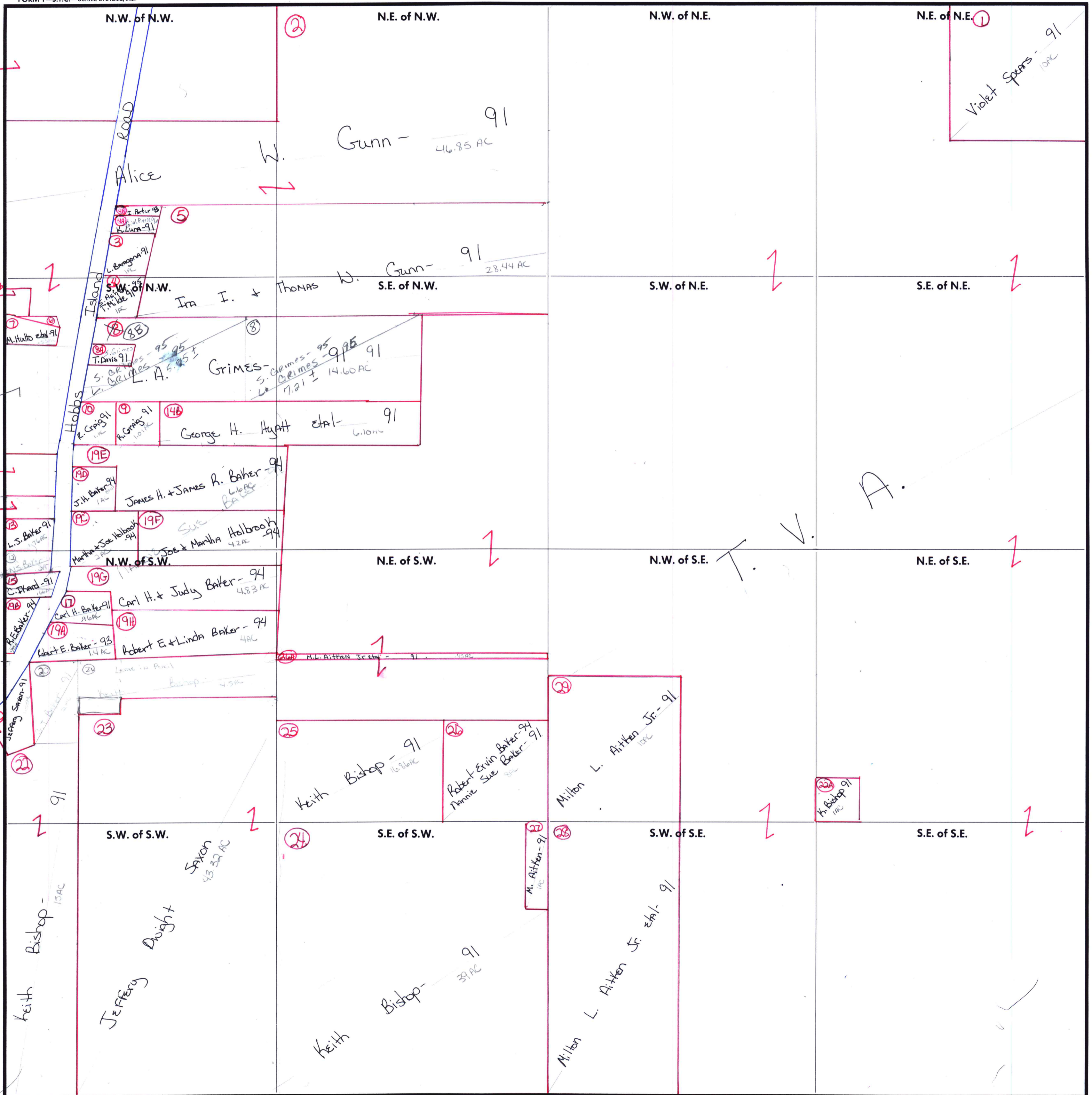


SECTION 11

TOWNSHIP 6

RANGE 1E

FORM 1-S.T.C.-CURRIE SYSTEMS, INC.



Carried in 6-1E-10

Carried in 6-1E-10

Carried in 6-1E-10

Carried in 6-1E-10

Carried in 6-1E-10

Carried in 6-1E-10

Cathy Ware-98
Lydie + Charles
Smith-99

M. W. Hutto-91

L. S. Baker-91

C. Hand-91

Jeffery Spoons-91

Keith Bishop-91

Keith Bishop-91

Keith Bishop-91

Keith Bishop-91

N.W. of N.W.

N.E. of N.W.

N.W. of N.E.

N.E. of N.E.

S.W. of N.W.

S.E. of N.W.

S.W. of N.E.

S.E. of N.E.

N.W. of S.W.

N.E. of S.W.

N.W. of S.E.

N.E. of S.E.

S.W. of S.W.

S.E. of S.W.

S.W. of S.E.

S.E. of S.E.

Alice W. Gunn - 46.85 AC

Ira I. + Thomas W. Gunn - 28.44 AC

Grimes - 14.60 AC

George H. Hyatt et al - 6.10 AC

James H. + James R. Baker - 6.16 AC

Joe + Martha Holbrook - 4.2 AC

Carl H. + Judy Baker - 4.83 AC

Robert E. + Linda Baker - 4 AC

Keith Bishop - 16.76 AC

Robert Ervin Baker - 9 AC

Milton L. Aitken Jr. - 10 AC

Keith Bishop - 1.5 AC

Jeffery Dwight - 43.32 AC

Keith Bishop - 31 AC

M. Aitken - 9 AC

Milton L. Aitken Jr. et al - 9 AC

Violet Spoons - 91

A.

COUNTY MADISON

Scale - 1 inch = 300 Ft.