

Blow up of NE 1/4

SECTION 7

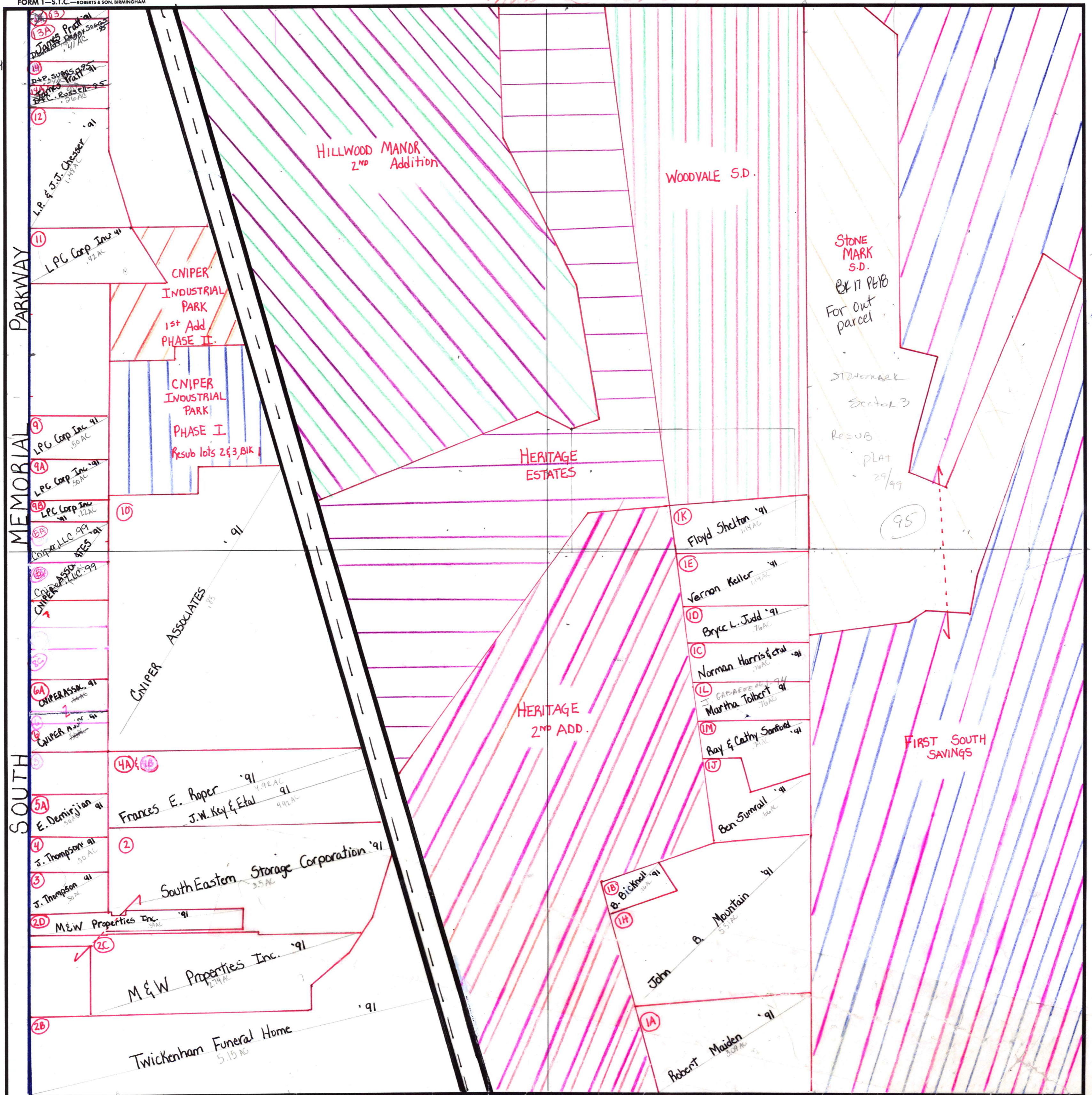
TOWNSHIP 5

RANGE 1E

FORM 1-S.T.C.—ROBERTS & SON, BIRMINGHAM

MUN 92 HSV CITY

(3A) Bankertrust of Madison -99
DPSS Prop. Inc -99



MEMORIAL PARKWAY
SOUTH

HILLWOOD MANOR 2ND Addition

WOODVALE S.D.

STONE MARK S.D.
EX 17 P618
For out parcel

STONE MARK
Sector 3
Resub
PLAT
29/99

(95)

HERITAGE ESTATES

HERITAGE 2ND ADD.

FLOYD Shelton '91
1.14 AC

Vernon Keller '91
1.14 AC

Bryce L. Judd '91
.76 AC

Norman Harris & etal '91
.16 AC

Martha Tolbert '91
.76 AC

Ray & Cathy Sanford '91
.76 AC

Ben Sumrall '91
.16 AC

John B. Mountain '91
5.31 AC

Robert Maiden '91
3.07 AC

Twickenham Funeral Home
5.15 AC

M & W Properties Inc. '91
2.14 AC

South Eastern Storage Corporation '91
3.5 AC

J. Thompson '91
50 AC

J. Thompson '91
50 AC

E. Demirjian '91
50 AC

Frances E. Roper '91
4.92 AC

J.W. Key & Etal '91
4.92 AC

4A & 1B

2

2C

2D

2B

6A

6B

6C

6D

6E

6F

6G

6H

6I

6J

6K

6L

6M

6N

6O

6P

6Q

6R

6S

6T

6U

6V

6W

6X

6Y

6Z

9A

9B

9C

9D

9E

9F

9G

9H

9I

9J

9K

9L

9M

9N

9O

9P

9Q

9R

9S

9T

9U

9V

9W

9X

9Y

9Z

11

12

13

14

15

16

17

18

19

20

21

22

23

24

25

26

27

28

29

30

31

32

33

34

35

36

37

38

39

40

41

42

43

44

45

46

47

48

49

50

51

52

53

54

55

56

57

58

59

60

61

62

63

64

65

66

67

68

69

70

71

72

73

74

75

76

77

78

79

80

81

82

83

84

85

86

87

88

89

90

91

92

93

94

96

97

98

99

100

COUNTY MADISON