

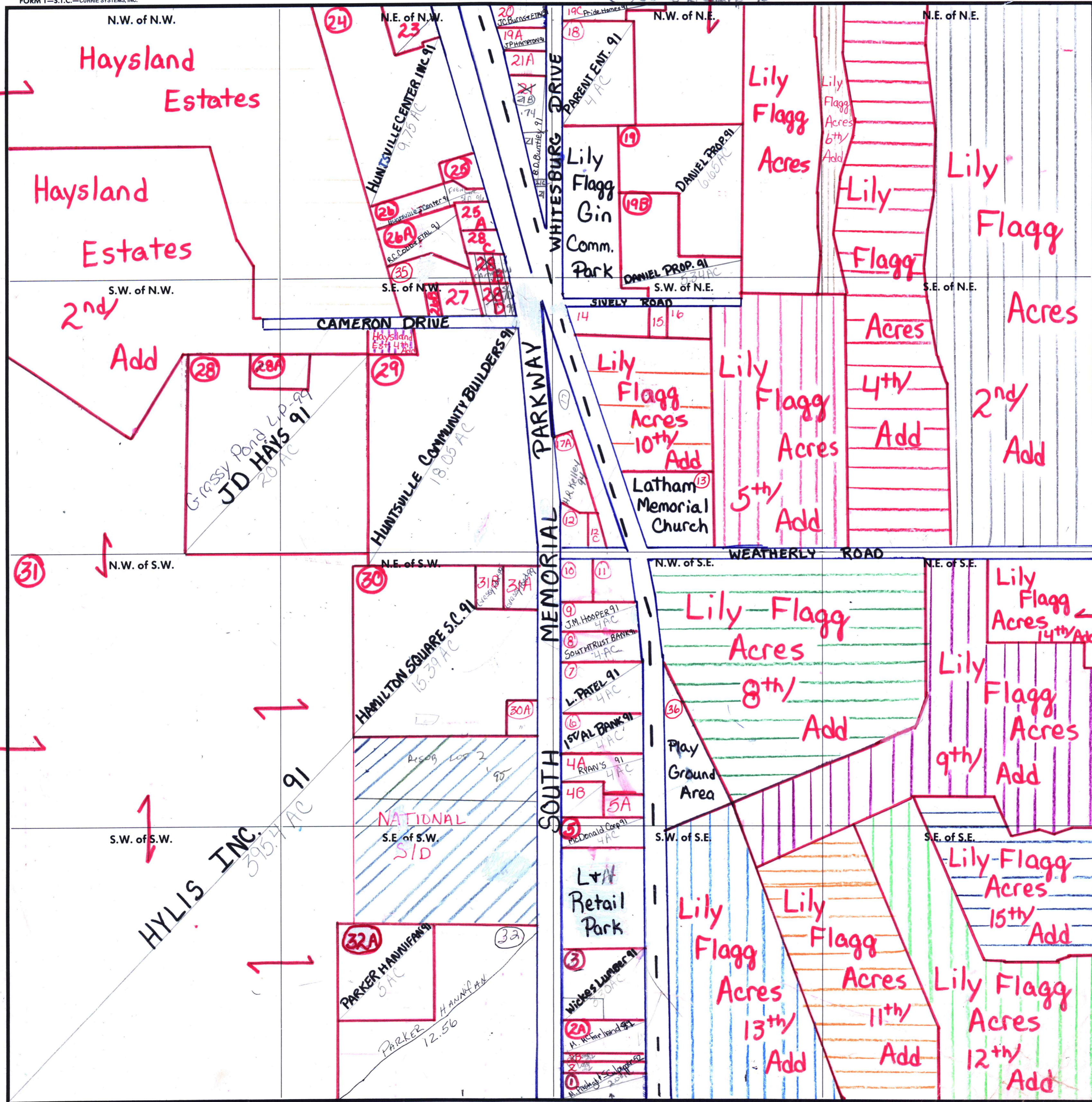
MUN 02 454 CITY

SECTION 31

TOWNSHIP 4

RANGE 1E

FORM 1-S.T.C.-CURRIE SYSTEMS, INC.



- (23) Huntsville Center 91
- (25) Huntsville Center 91
- (26A) Boonville Assoc. 91
- (26B) RC Cobb 91
- (27) Central Bank 91
- (28B) JD Hays 91
- (28C) JD Hays 91
- (28D) JD Hays 91
- (28E) G. 91
- (12) Della A. Park 91
- (12C) J.A. Fleming 91
- (14) W.J. Hastings 91
- (15) J.A. Fleming 91
- (16) J.G. Williams 91
- (17A) HR Kelley 91
- (28A) Pride Homes 91
- (4B) Edge Partnership 91
- (5A) Rime-Nall Devel. 91
- (10) Thrasher Oil Co. 91
- (11) Acuff-Wilmer Co. 91
- (1) M. Prestage et al 92
- (2) Niles Prestage 91
- (3) Niles Prestage 91
- (2A) K. McFarland 91
- (2B) Niles Prestage 91
- (5) McDonald Corp 91

COUNTY MADISON

Scale - 1 inch = 300 Ft.

old
shooters