

MUN 01  
MADISON CO.

MUN 02  
H'VILLE CITY

SECTION

25

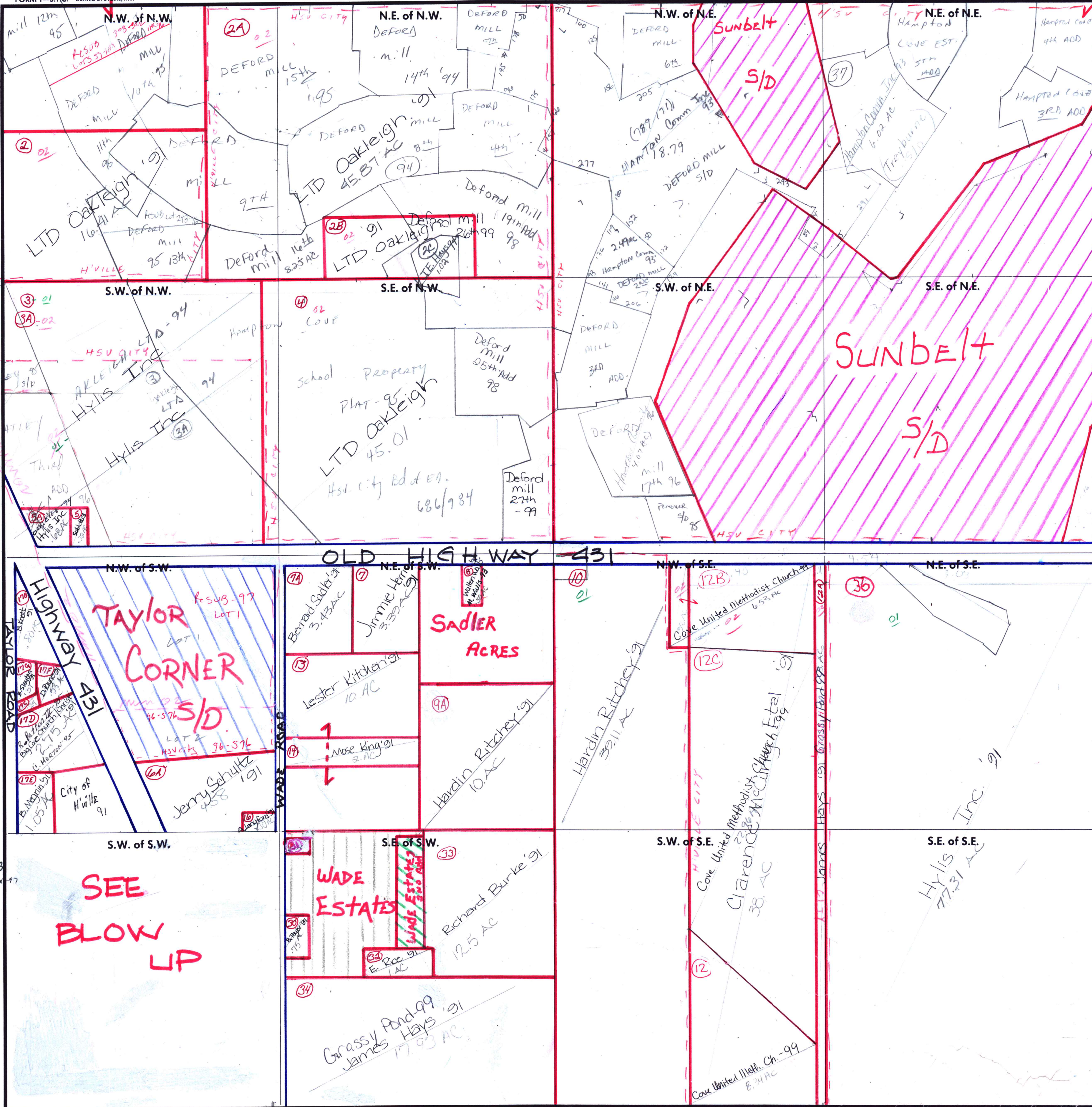
TOWNSHIP

4

RANGE

1E

CARRIED IN  
4-25-1971



CONTINUED TO  
4-1E-26

(176) James Taylor III '97  
 (17C) .24 AC '91  
 C. Zimmerman

(31) J & N Long '91  
 SARAH HORTON '93  
 Sarah Horton retd '97

Scale - 1 inch = 300 Ft.

COUNTY MADISON