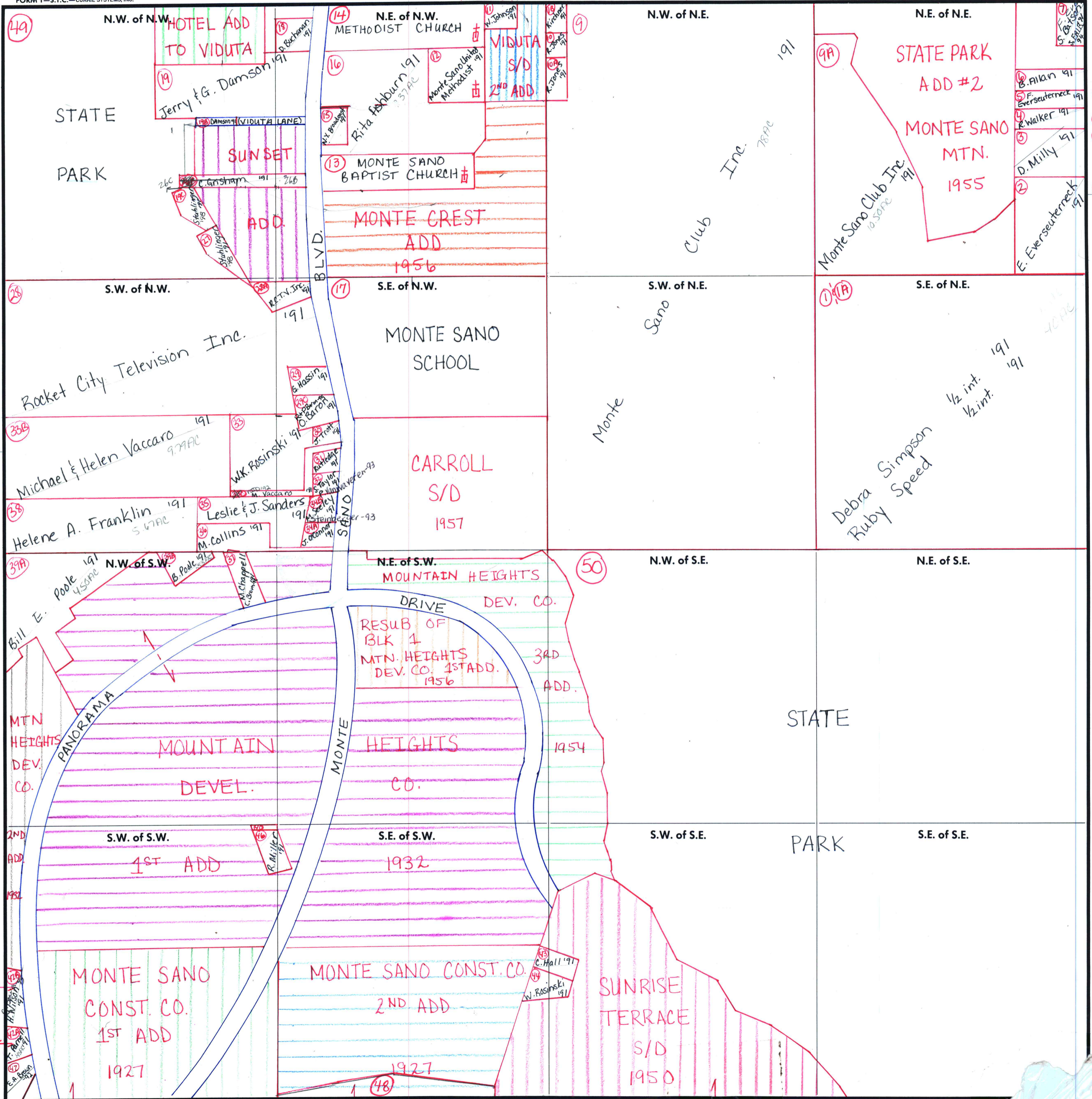


SECTION 33

TOWNSHIP 3

RANGE 1E

FORM 1 - S.T.C. - CURRIE SYSTEMS, INC.



(19) Ernst Stuhlinger et al - 98

(27) Ernst Stuhlinger - 98

(33) Steven J. Taylor - 92

(36A) M. Collins '91

(39B) K. Robertson '91
M.T. Robertson et al - 99

(40) R.S. Miller '91

(60) B. Allan '91

(54) F. Everseuterneck '91

(58) H. Pennington '91

(59) D. Milly '91

(52) N.E. '97

Scale - 1 inch = 300 Ft.

COUNTY MADISON