

NW 1/4

MUN OF MADISON CO

SECTION

24

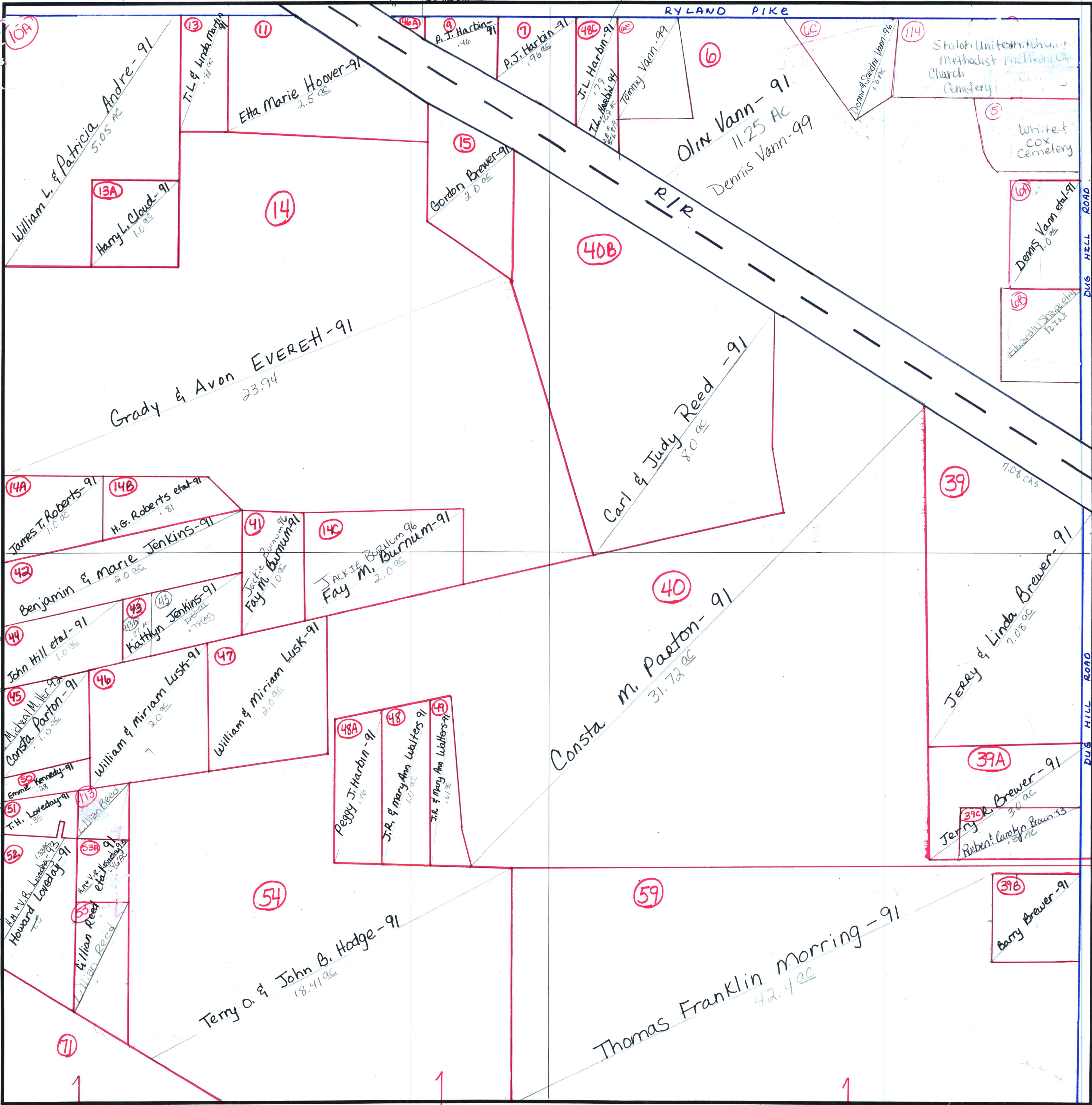
TOWNSHIP

3

RANGE

1E

FORM 1-S.T.C.-CURRIE SYSTEMS, INC.



not sure of exact location

43A John Hill et al 0.200

COUNTY MADISON

CONT IN SW 1/4

CONT. IN SW 1/4

CONT IN SW 1/4

DUG HILL ROAD