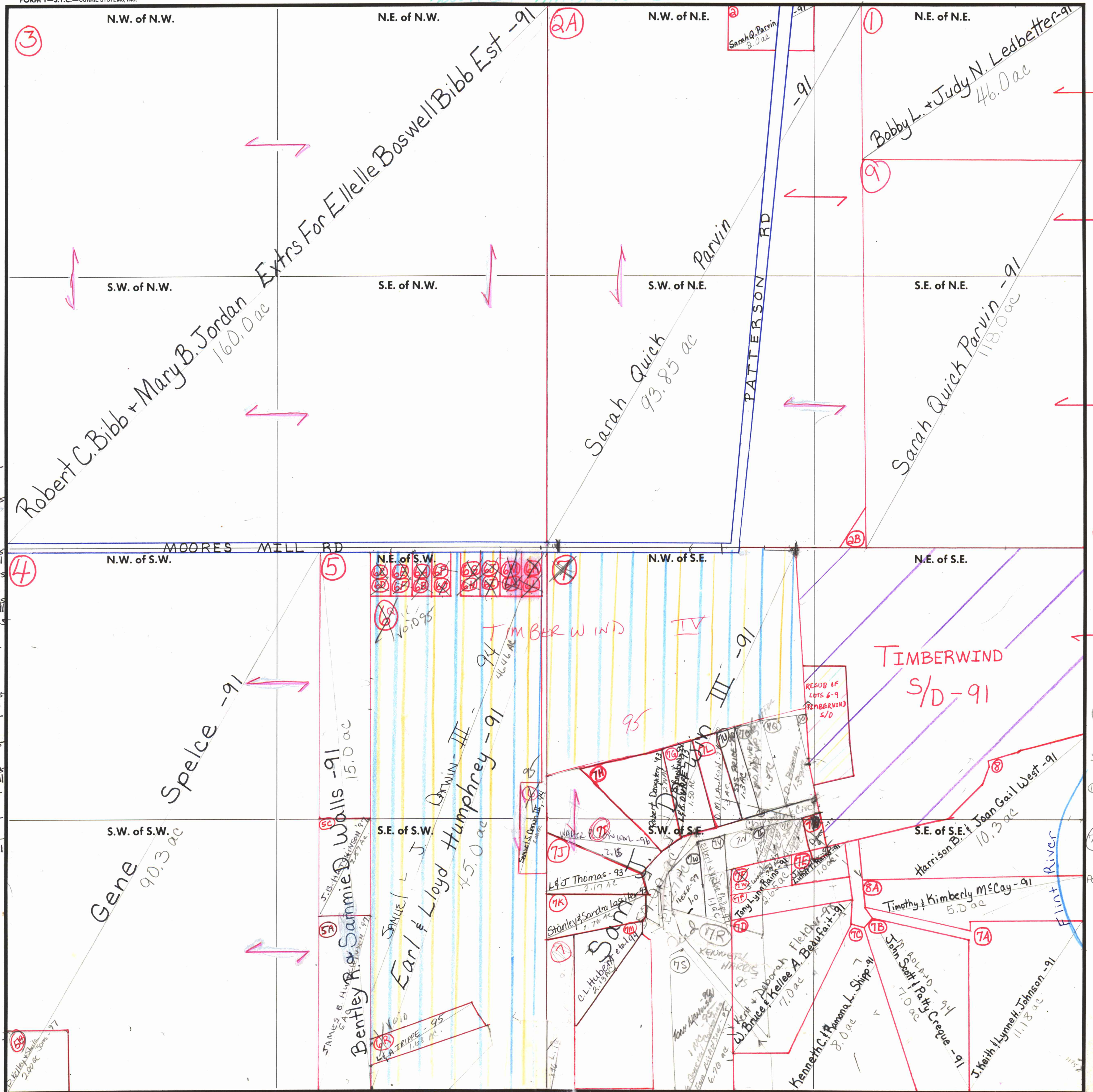


713

TOWNSHIP 62

RANGE 41E

FORM 1-S.T.C.-CURRIE SYSTEMS, INC.



- 1/2 int (6A) Samuel Darwin - 95
- 1/2 int (6B) Billy Hubert - 91
- 1/2 int (6C) Samuel Darwin - 95
- 1/2 int (6D) Darwin Dev. Corp. - 91
- 1/2 int (6E) Samuel Darwin - 95
- 1/2 int (6F) Billy Hubert - 91
- 1/2 int (6G) Samuel Darwin - 95
- 1/2 int (6H) Darwin Dev. Corp. - 91
- 1/2 int (6I) Samuel Darwin - 95
- 1/2 int (6J) Billy Hubert - 91
- 1/2 int (6K) Samuel Darwin - 95
- 1/2 int (6L) Darwin Dev. Corp. - 91
- 1/2 int (6M) Samuel Darwin - 95
- 1/2 int (6N) Billy Hubert - 91
- 1/2 int (6O) Samuel Darwin - 95
- 1/2 int (6P) Darwin Dev. Corp. - 91
- 1/2 int (6Q) Samuel Darwin - 95
- 1/2 int (6R) Billy Hubert - 91
- 1/2 int (6S) Samuel Darwin - 95
- 1/2 int (6T) Darwin Dev. Corp. - 91
- 1/2 int (6U) Samuel Darwin - 95
- 1/2 int (6V) Billy Hubert - 91
- 1/2 int (6W) Samuel Darwin - 95
- 1/2 int (6X) Darwin Dev. Corp. - 91
- 1/2 int (6Y) Samuel Darwin - 95
- 1/2 int (6Z) Billy Hubert - 91

COUNTY MADISON

Scale - 1 inch = 300 Ft.

72 - N. Telaga 76

(2B) Darwin Development Corp Inc 15 ac - 91

(7B) LARRY + DEBORAH IVER + ROBER STAFFORD 1.3 AC.

(7C) J.E. M. COUGAL m - 95 .09 ac.

(7P) Thomas Kennedy 96 Perry + Leigh 98

(7A) John Scott & Patty Cregee - 91 7.0 ac

(7B) J. Keith & Lynne H. Johnson - 91 11.18 ac

(7C) Kenneth C. & Pamela L. Shipp - 91 8.0 ac

(7D) W. Bruce & Deborah Fielder - 91 7.0 ac

(7E) Stanley & Sandra Lassiter - 91 7.7 ac

(7F) L & J Thomas - 93 2.17 ac

(7G) Robert Doughty 12 2.17 ac

(7H) Robert Doughty 12 2.17 ac

(7I) Robert Doughty 12 2.17 ac

(7J) Robert Doughty 12 2.17 ac

(7K) Robert Doughty 12 2.17 ac

(7L) Robert Doughty 12 2.17 ac

(7M) Robert Doughty 12 2.17 ac

(7N) Robert Doughty 12 2.17 ac

(7O) Robert Doughty 12 2.17 ac

(7P) Robert Doughty 12 2.17 ac

(7Q) Robert Doughty 12 2.17 ac

(7R) Robert Doughty 12 2.17 ac

(7S) Robert Doughty 12 2.17 ac

(7T) Robert Doughty 12 2.17 ac

(7U) Robert Doughty 12 2.17 ac

(7V) Robert Doughty 12 2.17 ac

(7W) Robert Doughty 12 2.17 ac

(7X) Robert Doughty 12 2.17 ac

(7Y) Robert Doughty 12 2.17 ac

(7Z) Robert Doughty 12 2.17 ac