

SECTION 29

TOWNSHIP 2

RANGE 1E

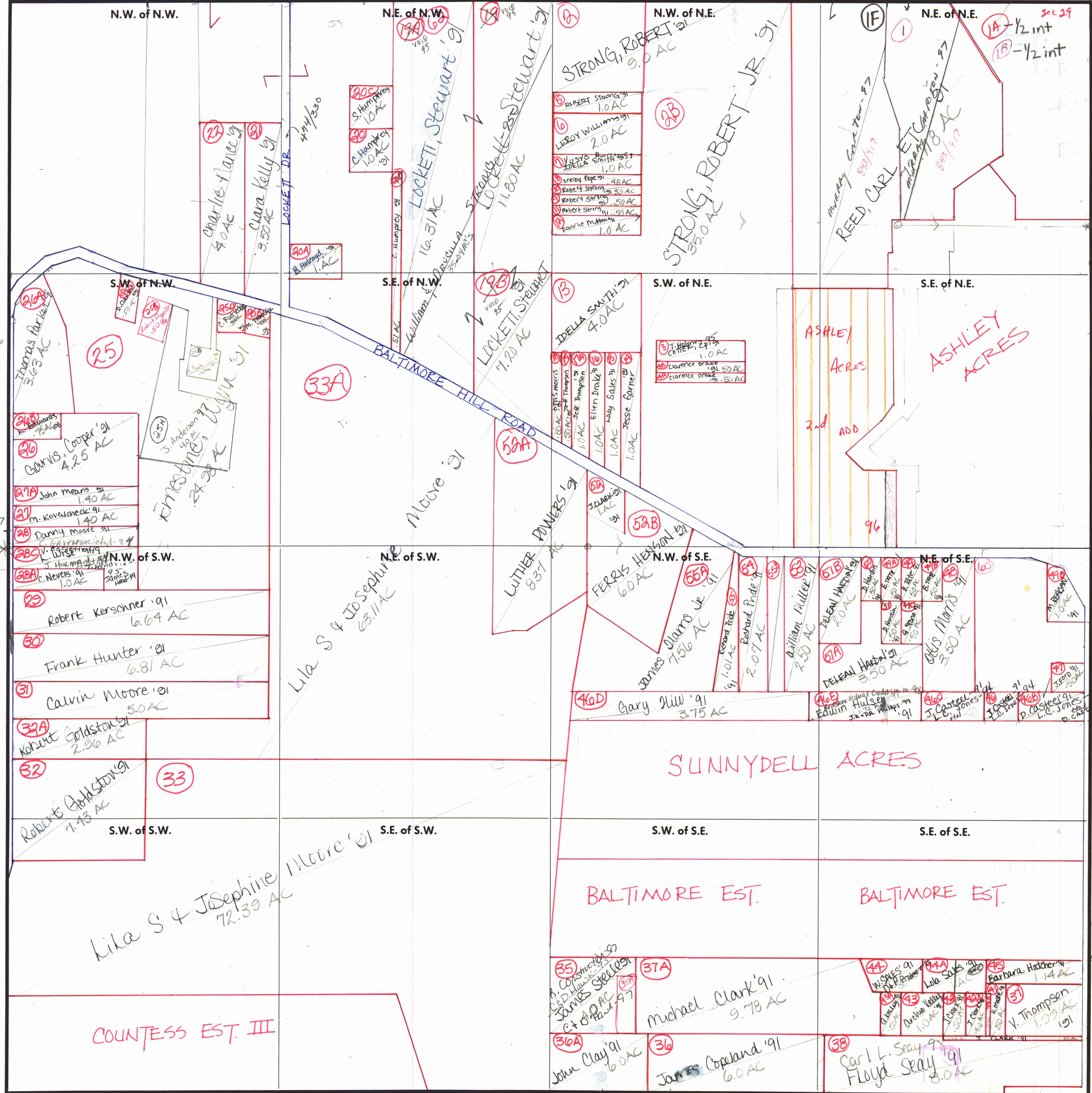
FORM 1-S.T.C.-CURRIE SYSTEMS, INC.

Cont from 2-E-207*12

CONT IN 2-15-207-16D
CONT. IN 2-15-207-16E

Sec 20

Sec 29



20A Thomas & Judy Griffin 96 1.0 AC.

28 William Barron 97

28C Household Finance Corp of Alabama 99

28D Wilson & Franco Revelo 98

38 J.M. Donaldson 98

41, 42-93 Annie Drake

Oscar Drake, Fern Sales, Clarence Drake, Melvin Drake, Shelby Drake, Vera Curry, & Robert Drake 96

49 Christina Tate 97

49B Christina Tate 97 Sylvia Hughes 97

47, 48, 49

44C Geneva Jackson 98 1.50 AC

44A Samuel Sales 98 1.50 AC