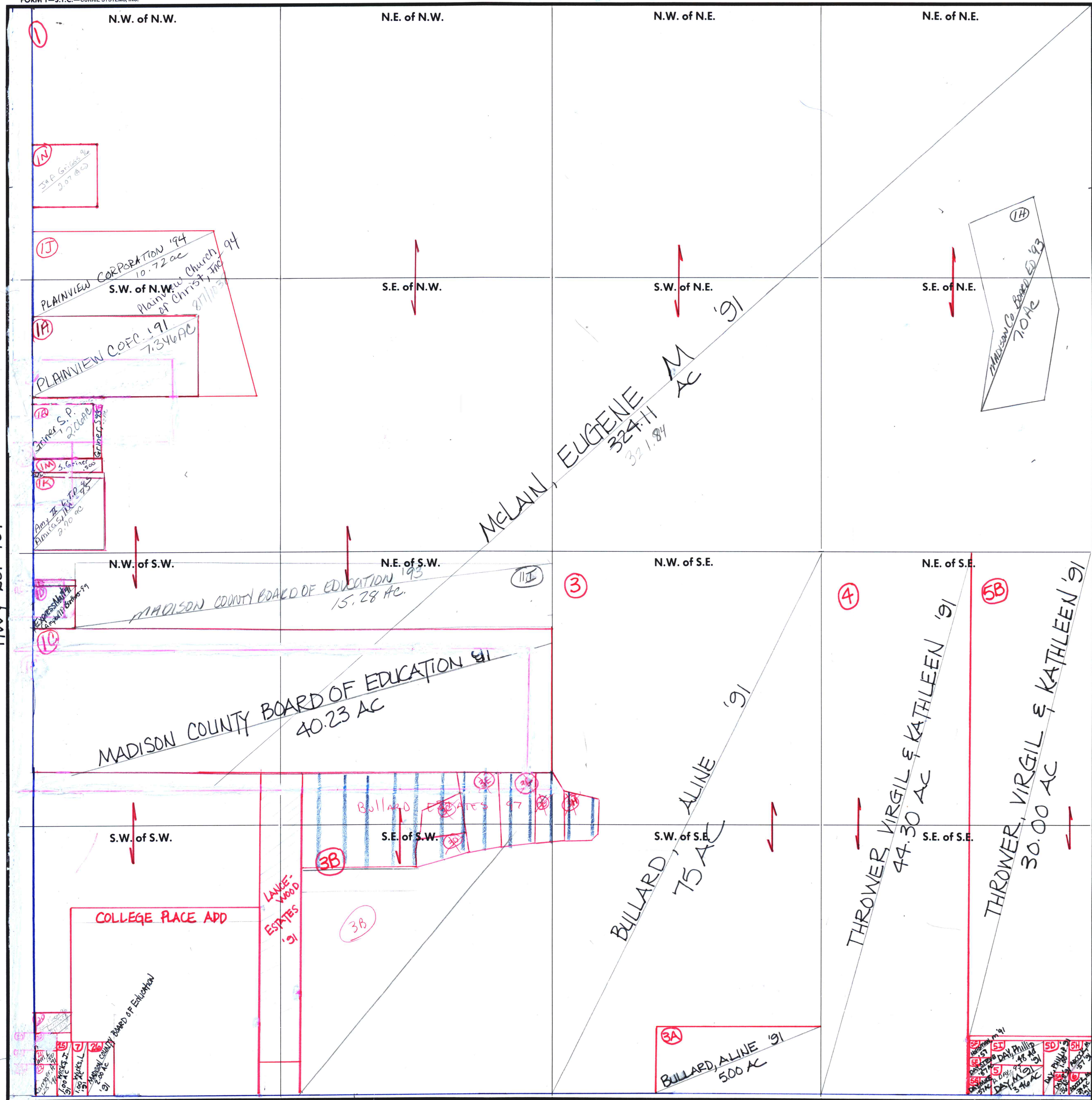


SECTION 19

TOWNSHIP 1

RANGE 1E

FORM 1—S.T.C.—CURRIE SYSTEMS, INC.



(L) Amy II-96  
D: 309 AC

(SI) (E) EXPRESS  
MART  
.115 AC  
Campbell  
Brothers-99

HWY 231-431

(M) Alas Camger  
eial-93  
.50 AC

(X) Madison  
County

(45) James Ben Hillis-93

COUNTY MADISON

Scale — 1 inch = 300 Ft.

JOE QUICK Rd

(56) Phillip A. Day-96  
R Joan Day-96  
(5E) Phillip A. Day-98  
R Joan Day-96

(5C) THROWER, V 191  
.47  
(5F) Day, Phillip-90  
.57  
(5H) John W.  
Patti G. Johnson  
97  
(5J) J.W + P.  
Johnson-97