

BLOW-UP OF W 1/2 OF SE 1/4

mun 02 - City of HSV

SECTION 8

TOWNSHIP 5

RANGE 1E

FORM 1-S.T.C.-ROBERTS & SON, BIRMINGHAM

Woodridge South 2nd Add

Woodridge South 3rd Add

1/4 AC MORE OF THESE ARE IN ADJACENT RANGE

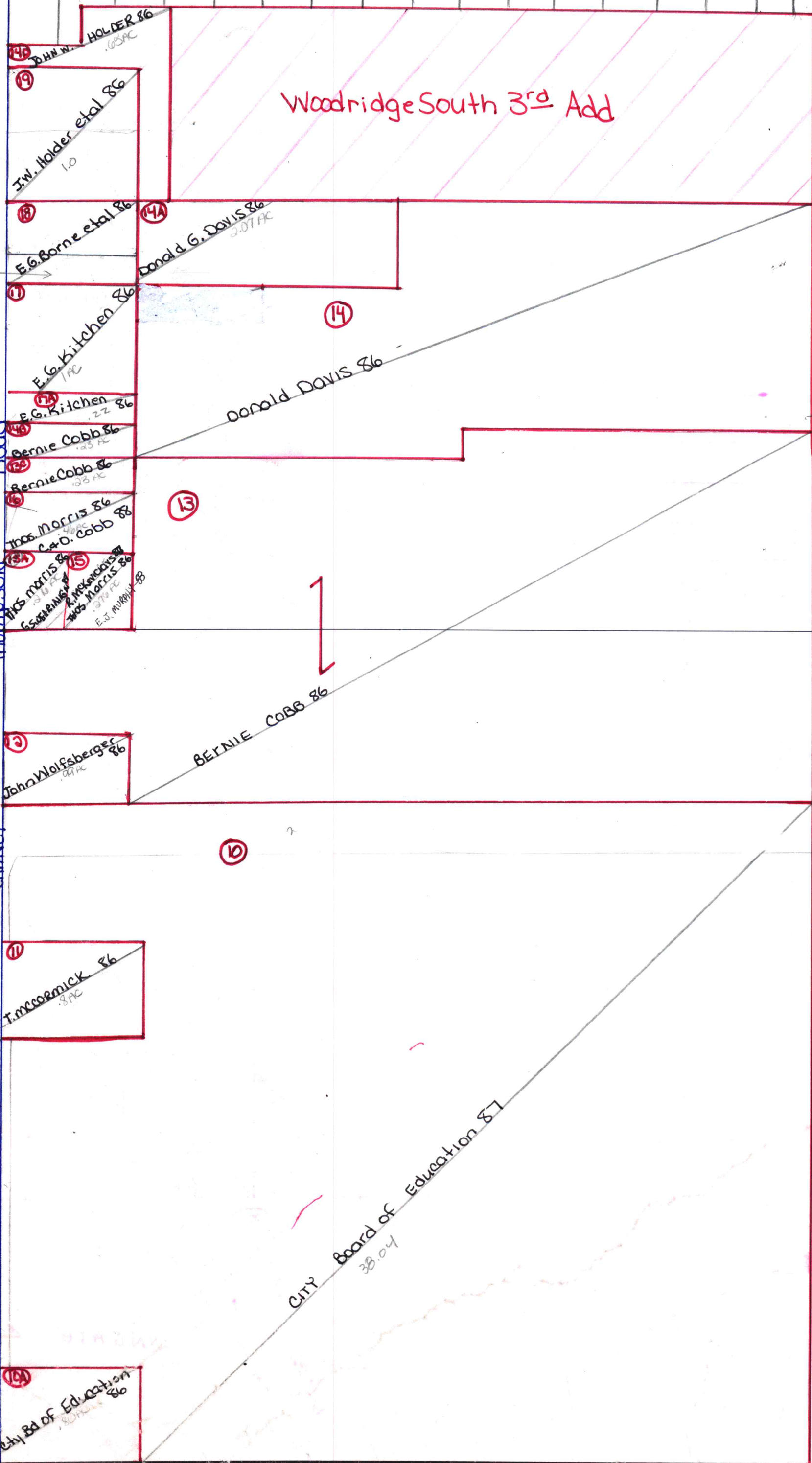
D.B.J. COBB .23 AC

F.I. Sweet 90

WANT COMANT-91

THOMPSON ROAD

CHANEY



COUNTY MADISON

58001