

SECTION 29

5-1E-20

TOWNSHIP 5

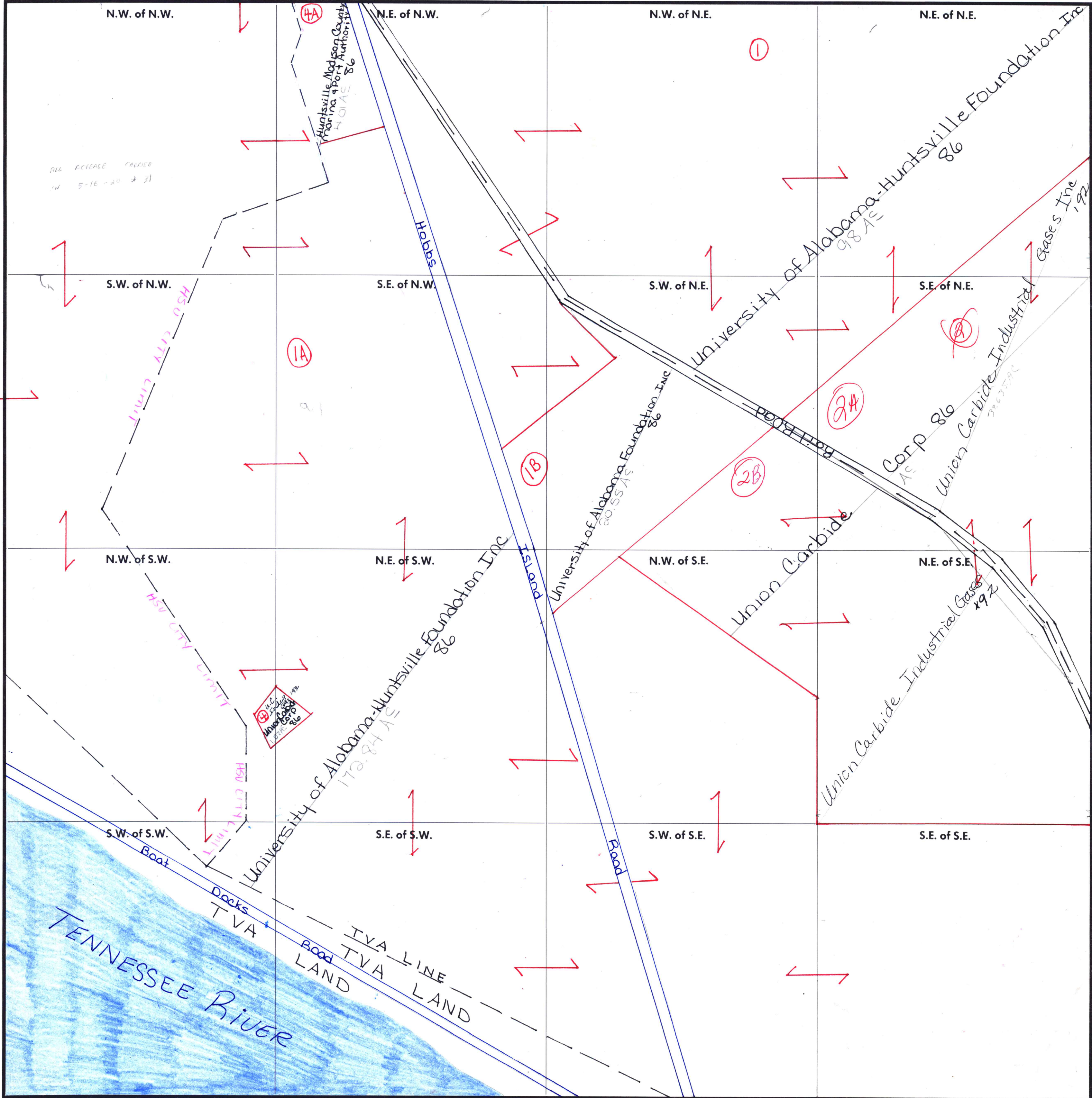
5

RANGE 1E

FORM 1—S.T.C.—ROBERTS & SON, BIRMINGHAM

1/10
CENT IN
5-1E-30

ALL DECREASE CARRIED
IN 5-1E-20 & 31



②
Tract 3
729/192
from
Union Carbide
Corp
undatable
1.59AC

COUNTY MADISON

Scale — 1 inch = 300 Ft.