

Nannette Laughlin -90

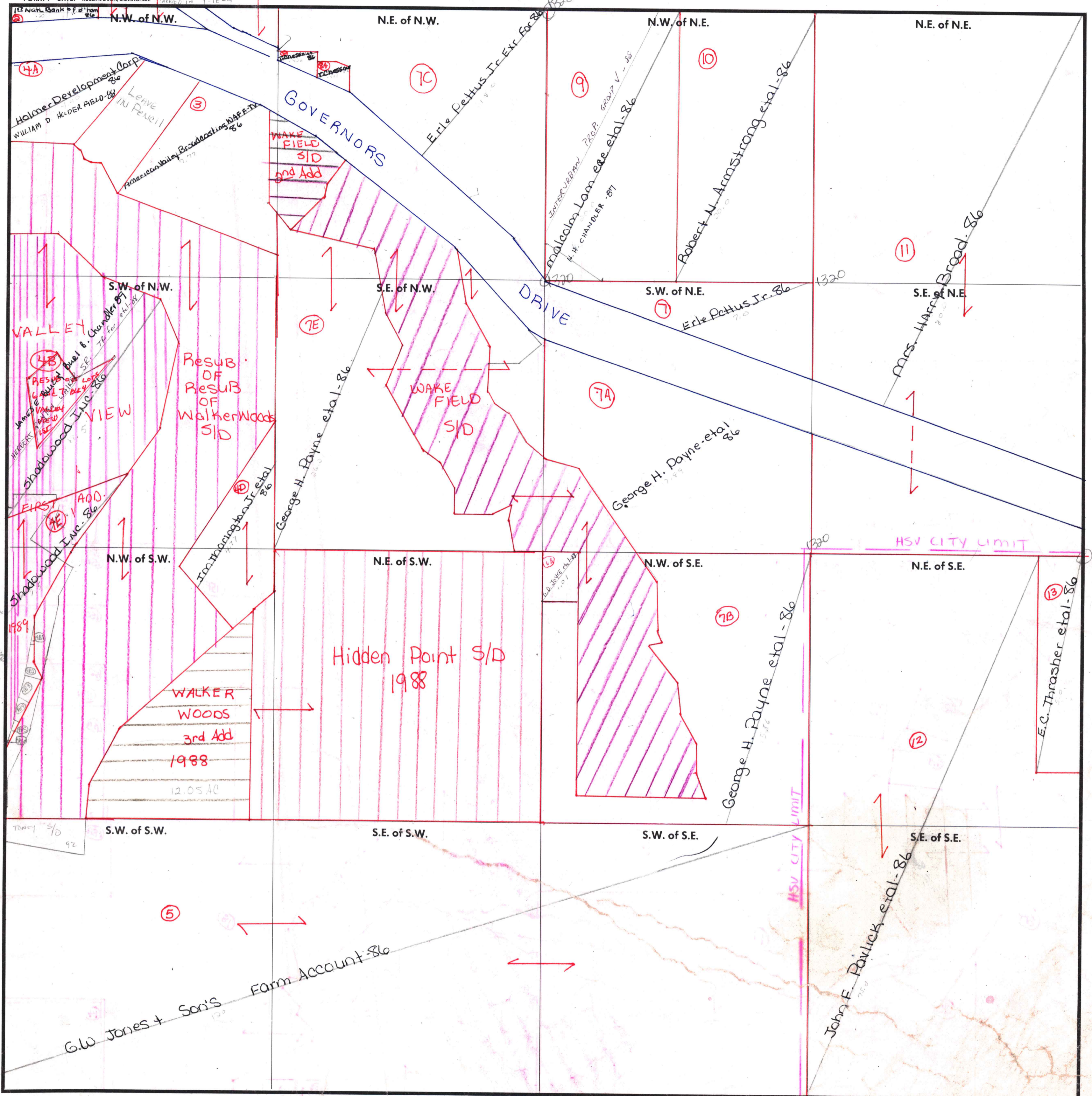
Mun 02 - City of HSV  
Mun 01 - Madison Co

SECTION 9

TOWNSHIP 4

RANGE 1E

FORM 1-S.T.C.—ROBERTS & SON, BIRMINGHAM



- (481) - MAYE, NEWM - 86
- (482) - M. MARL LEO - 88
- (483) - G. H. TARKER - 88
- (484) - C. K. ANDERSON - 88
- (485) - SHADOWWOOD INC - 88
- (486) - SHADOWWOOD INC - 88

COUNTY MADISON

Scale - 1 inch = 300 Ft.