

STRACY

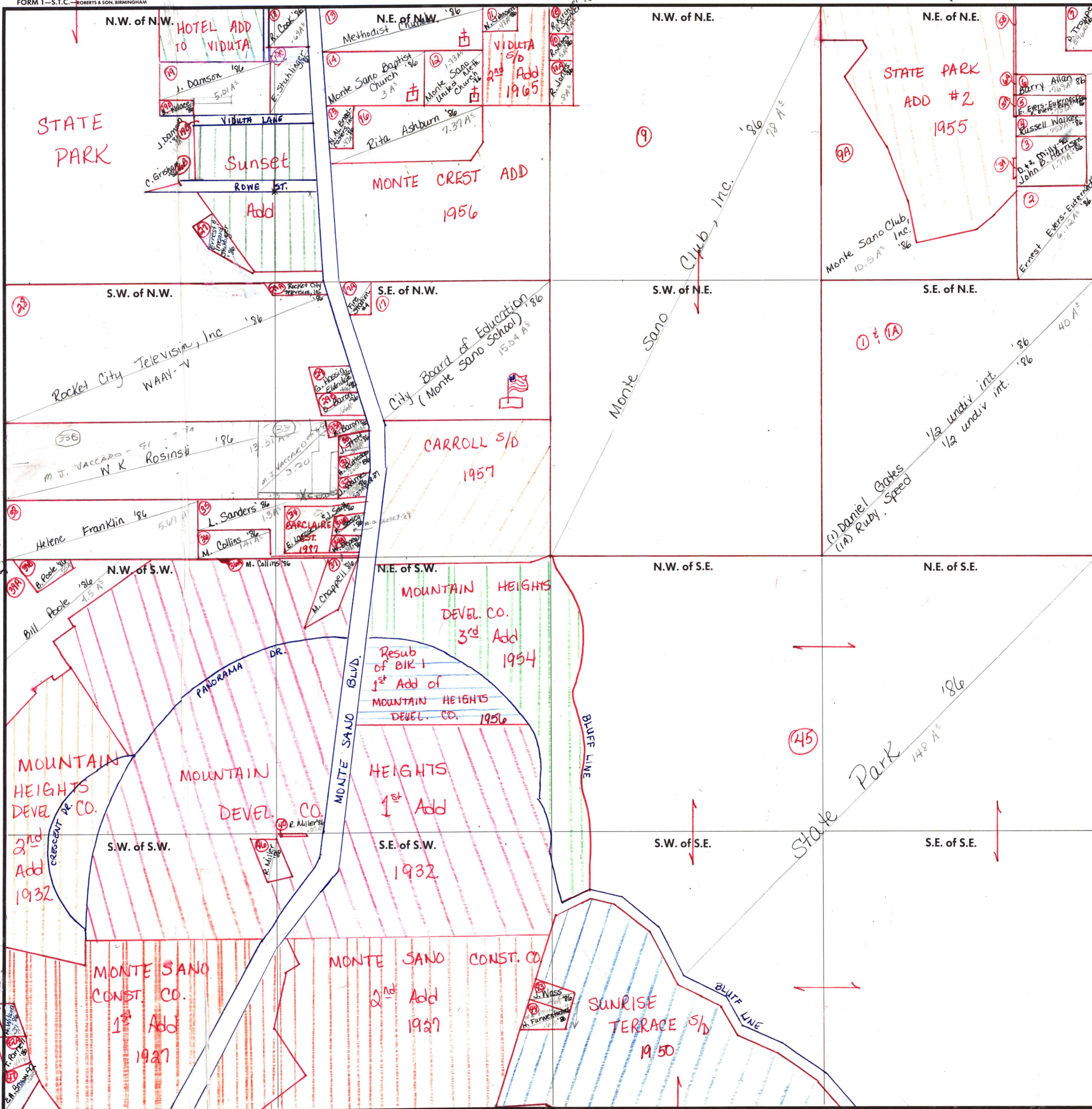
SECTION 33

TOWNSHIP 3

RANGE 1E

FORM 1-S.T.C. ROBERTS & SON, BIRMINGHAM

carried in 3-1E-28



- ① SARA B. BATSON-89
- ② SARA B. BATSON-90
- ③ (ROW) John B. Harrison '86
- ④ (ROW) Ernest & Frank Evers-Euenede '86
- ⑤ (ROW) H. Pennington '86
- ⑥ (ROW) B. Allen '86
- ⑦ D. + J. Milly -90

- ③ J. O'Connor-89
- ④ Steven J. Taylor-92

Scale - 1 inch = 300 Ft.
 ④2 CHRISTOPHER R. HALL - 91

COUNTY MADISON