

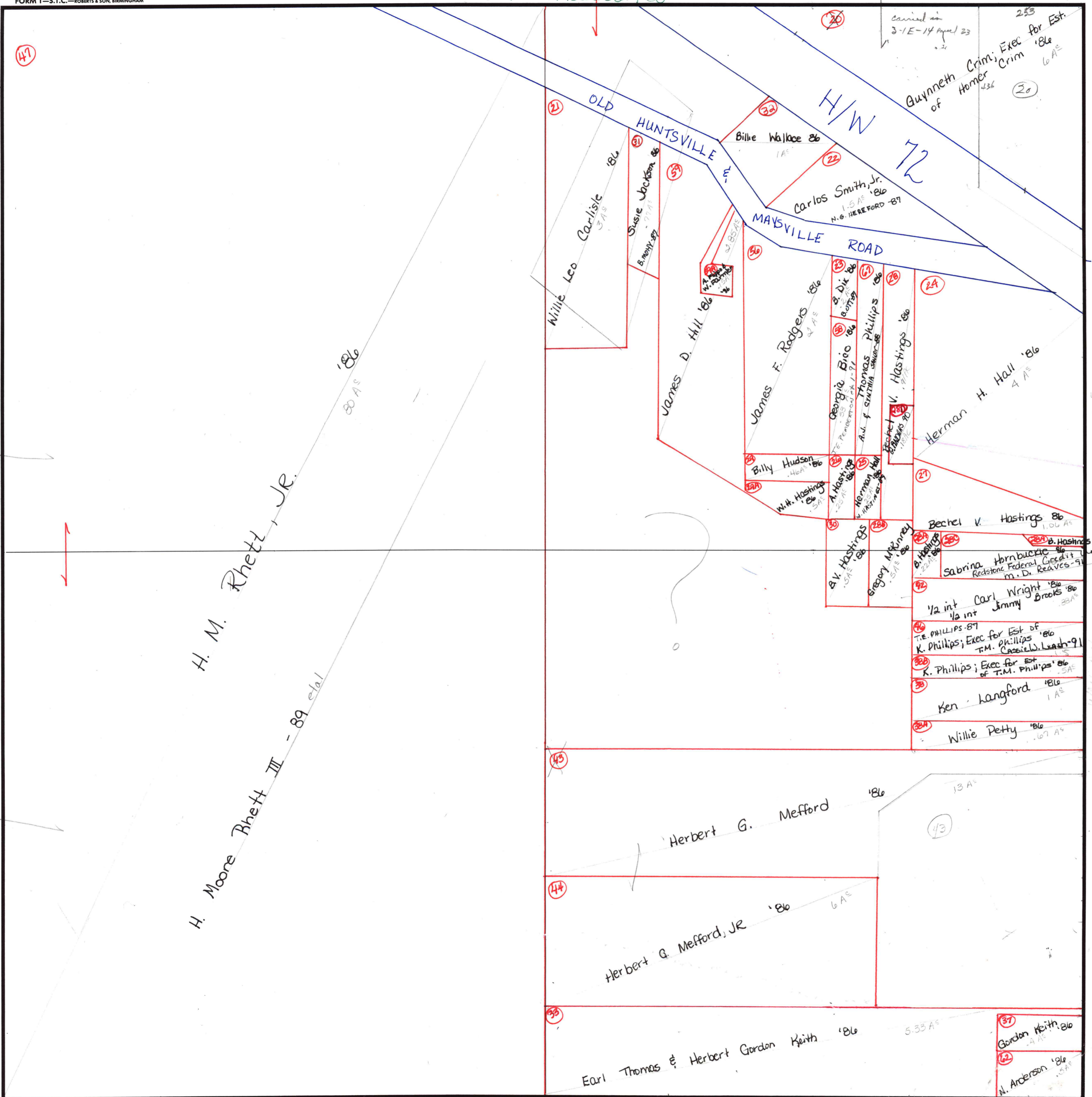
BLOW-UP of NW 1/4

SECTION 23

TOWNSHIP 3
mun of - madison co

RANGE 1E

FORM 1-S.T.C.-ROBERTS & SON, BIRMINGHAM



carried in 3-1E-14 April 23
 253
 Guyneth Crim; Exec for Est. of Homer Crim '86
 6 A[±]

UNPLATTABLE:
 (21A) Joe Butler '86
 6 A[±]
 (24C) Maggie Hastings '86
 3 A[±]

Union - 91
 750/1007

H. M. Rhett, JR.
 H. Moore Rhett III - 89 et al

(47)

(21)

(22)

(23)

(24)

(25)

(26)

(27)

(28)

(29)

(30)

(31)

(32)

(33)

(34)

(35)

(36)

(37)

(38)

(39)

(40)

(41)

(42)

(43)

(44)

(45)

(46)

(47)