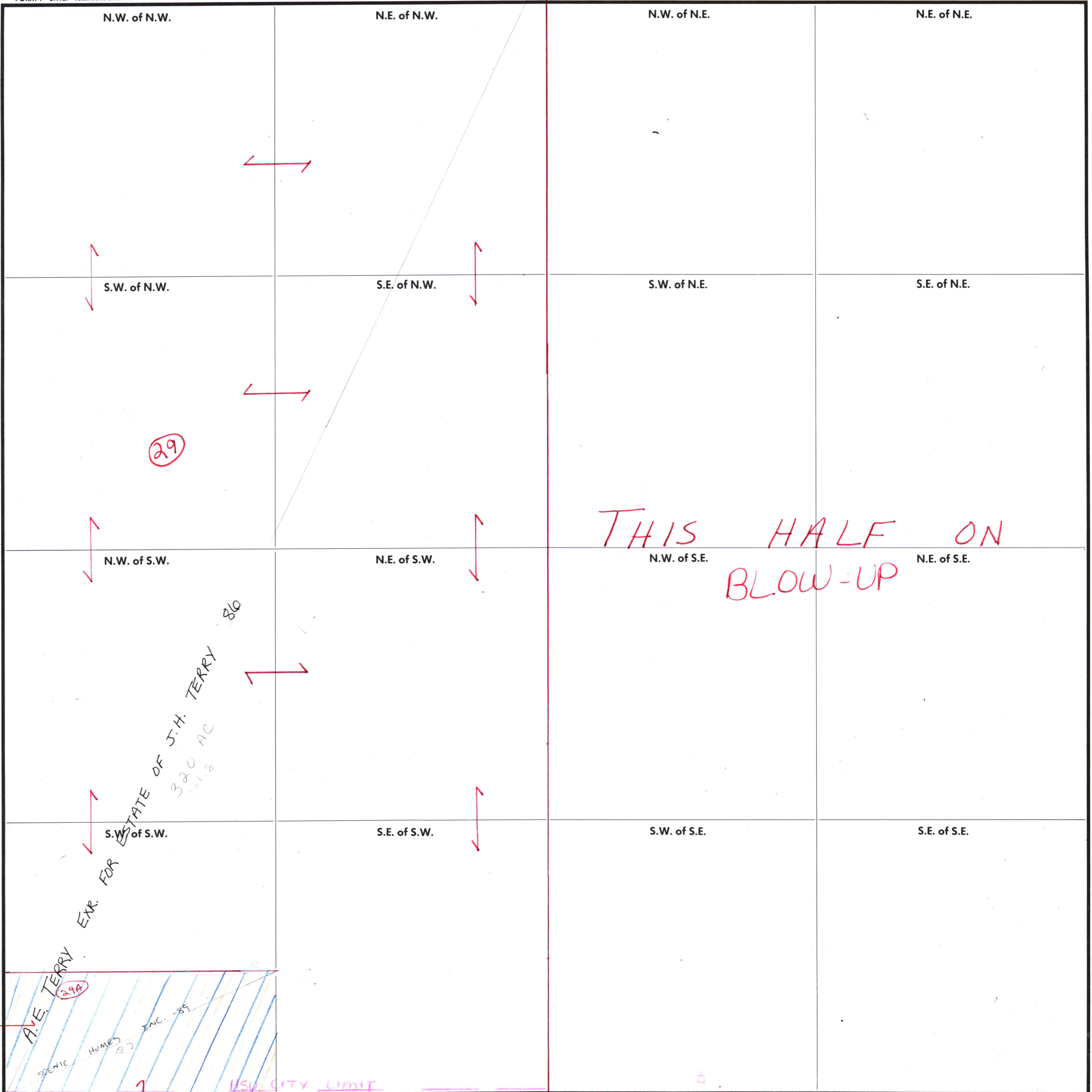


SECTION 21

TOWNSHIP 3

RANGE 1E

FORM 1—S.T.C.—ROBERTS & SON, BIRMINGHAM



THIS HALF ON BLOW-UP

29

A.E. TERRY EXR. FOR ESTATE OF J.H. TERRY 86 320 AC 191-8

A.E. TERRY 29A

SCENIC HOMES INC. 89

HSU CITY LIMIT

CARRIED ON CHAPMAN COVE COUNTY MADISON

Scale — 1 inch = 300 Ft.