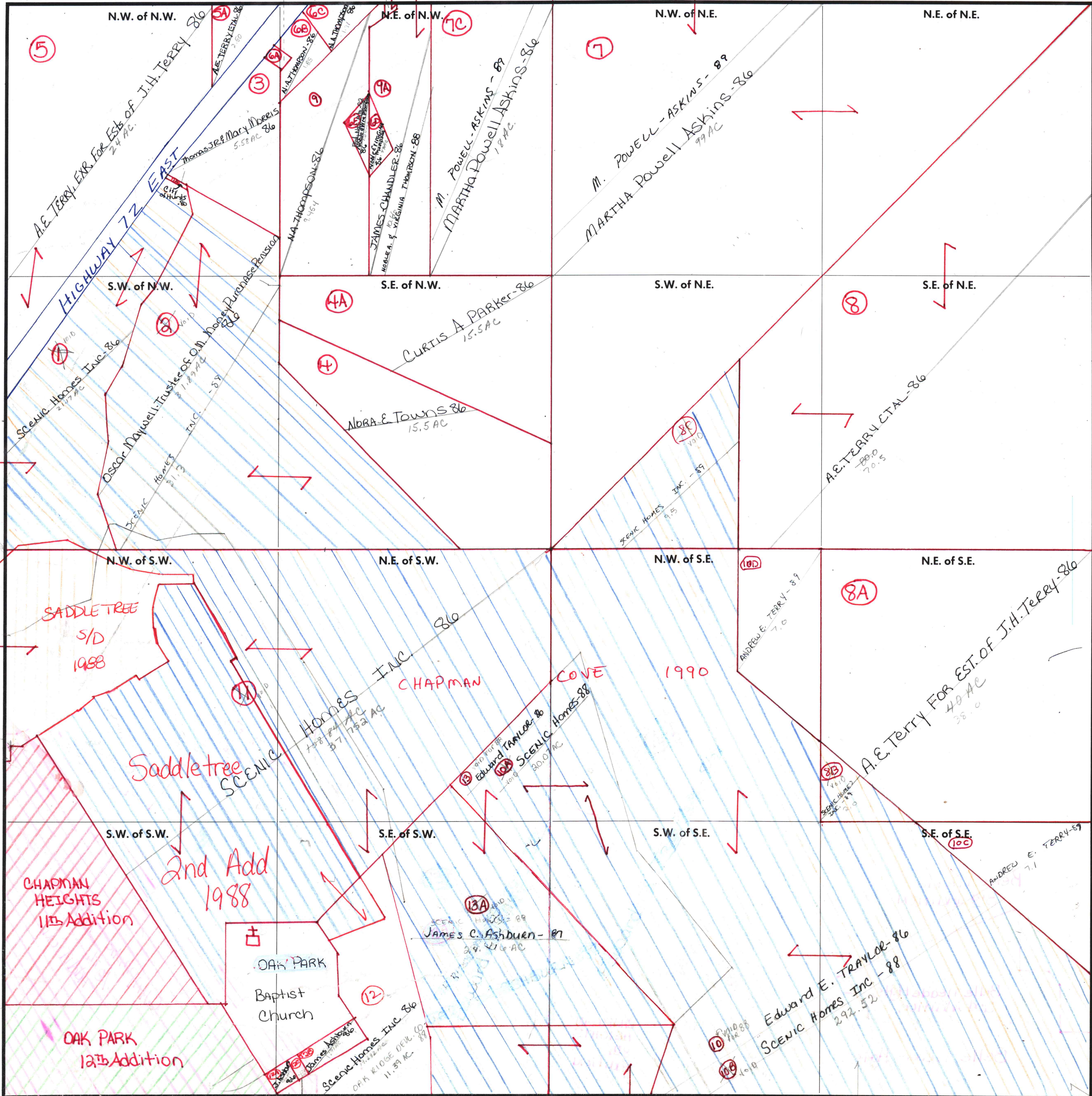


SECTION 20

TOWNSHIP 3

RANGE 1E

FORM 1-S.T.C.—ROBERTS & SON, BIRMINGHAM



COUNTY MADISON

Scale — 1 inch = 300 Ft.

CARRIED IN 2-15-29-8-16

CONT IN 3-1E-29

CONT IN 3-1E-19

AC. CONT. IN 3-1E-19

COURT IN 3-1E-17

AC. CONT. IN 3-1E-17

JAMES CHANDLER NOBLE & VIRGINIA THOMPSON - 88

MOBLE Thompson - 86

(13)

(7)

(5)

(4A)

(8)

(8A)

(10D)

(11)

(13A)

(12)

(10)

(10B)

(10C)

(13B)

(13C)

(13D)