

SECTION 11

TOWNSHIP 3

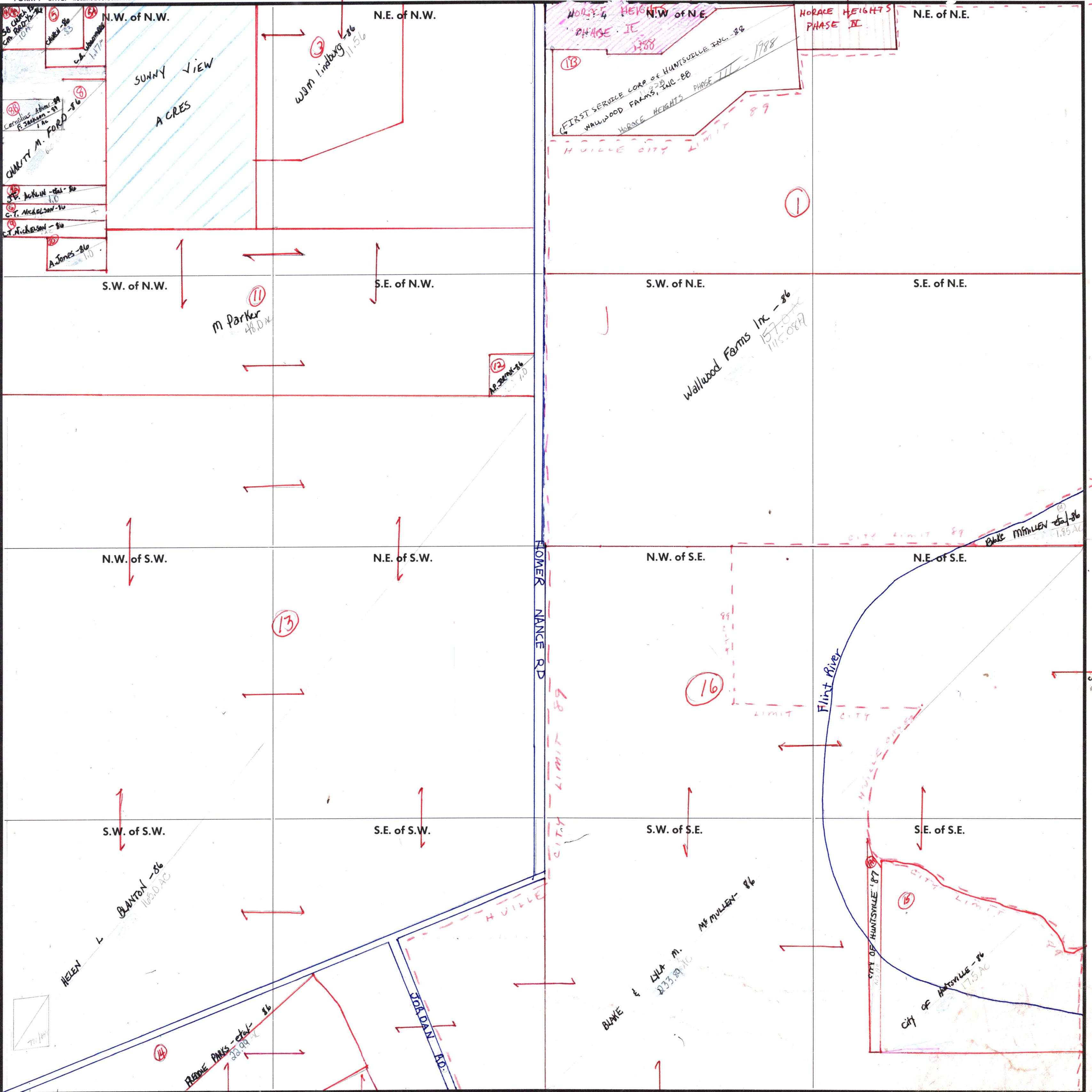
RANGE 1E

MUN 02 - HUNTSVILLE CITY

MUN 01 - Madison Co

CARRIED IN 3-1E-2

FORM 1 - S.T.C. - ROBERTS & SON, BIRMINGHAM



COUNTY MADISON

(13A) N.Z. TURNER - unplatable
6.5 AC

Scale - 1 inch = 300 Ft.

CONT. IN 3-1E-14

CONT. IN 3-1E-14

CONT. IN 3-1E-12