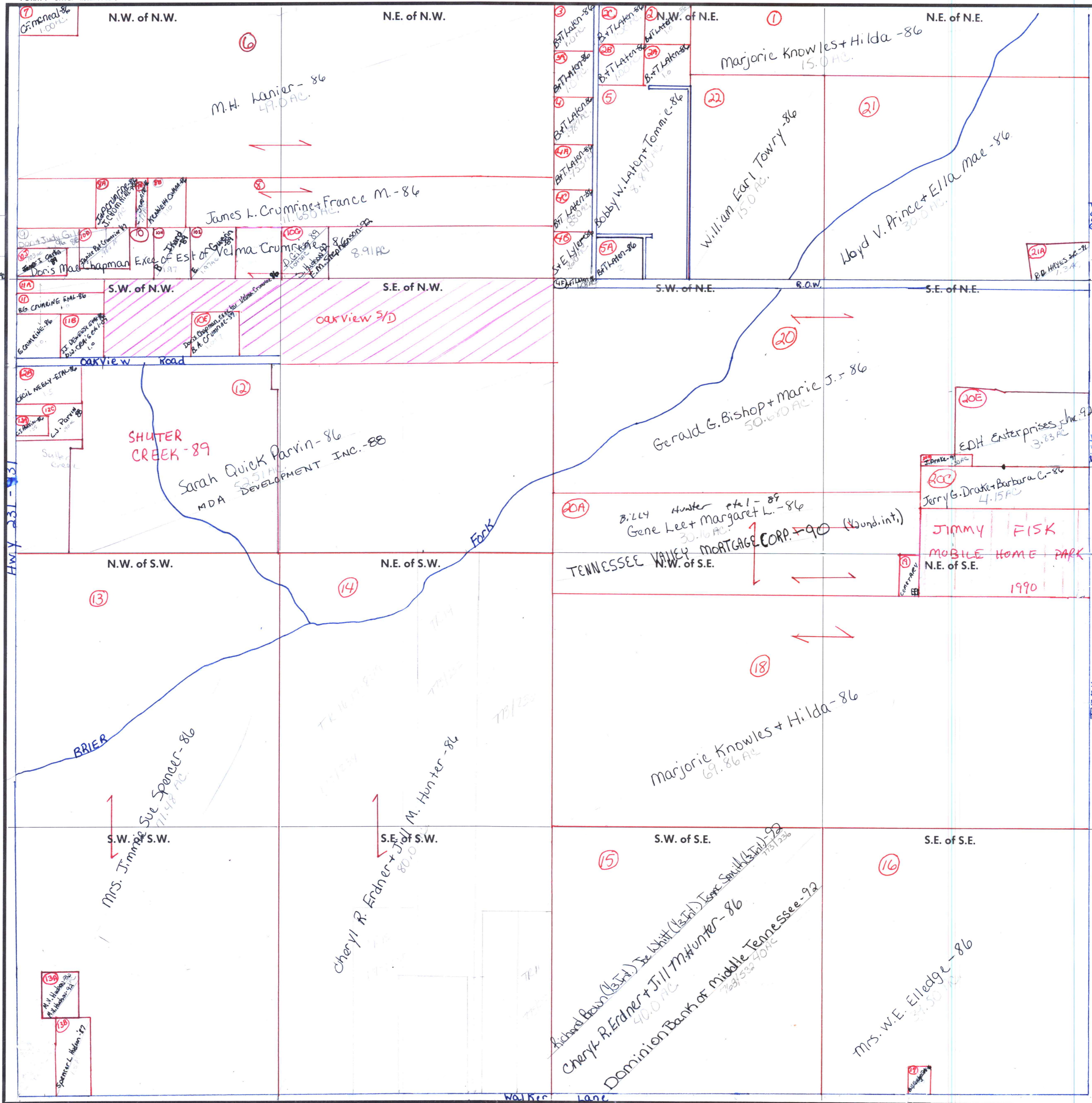


FORM 1-S.T.C.—ROBERTS & SON, BIRMINGHAM



9A J. CRUMRINE - 90  
 10F D. GILLES ETAL - 88  
 10J MARGARETA, CE. NE - 1910

120  
 121  
 122  
 123  
 124  
 125  
 126  
 127  
 128  
 129  
 130  
 131  
 132  
 133  
 134  
 135  
 136  
 137  
 138  
 139  
 140  
 141  
 142  
 143  
 144  
 145  
 146  
 147  
 148  
 149  
 150