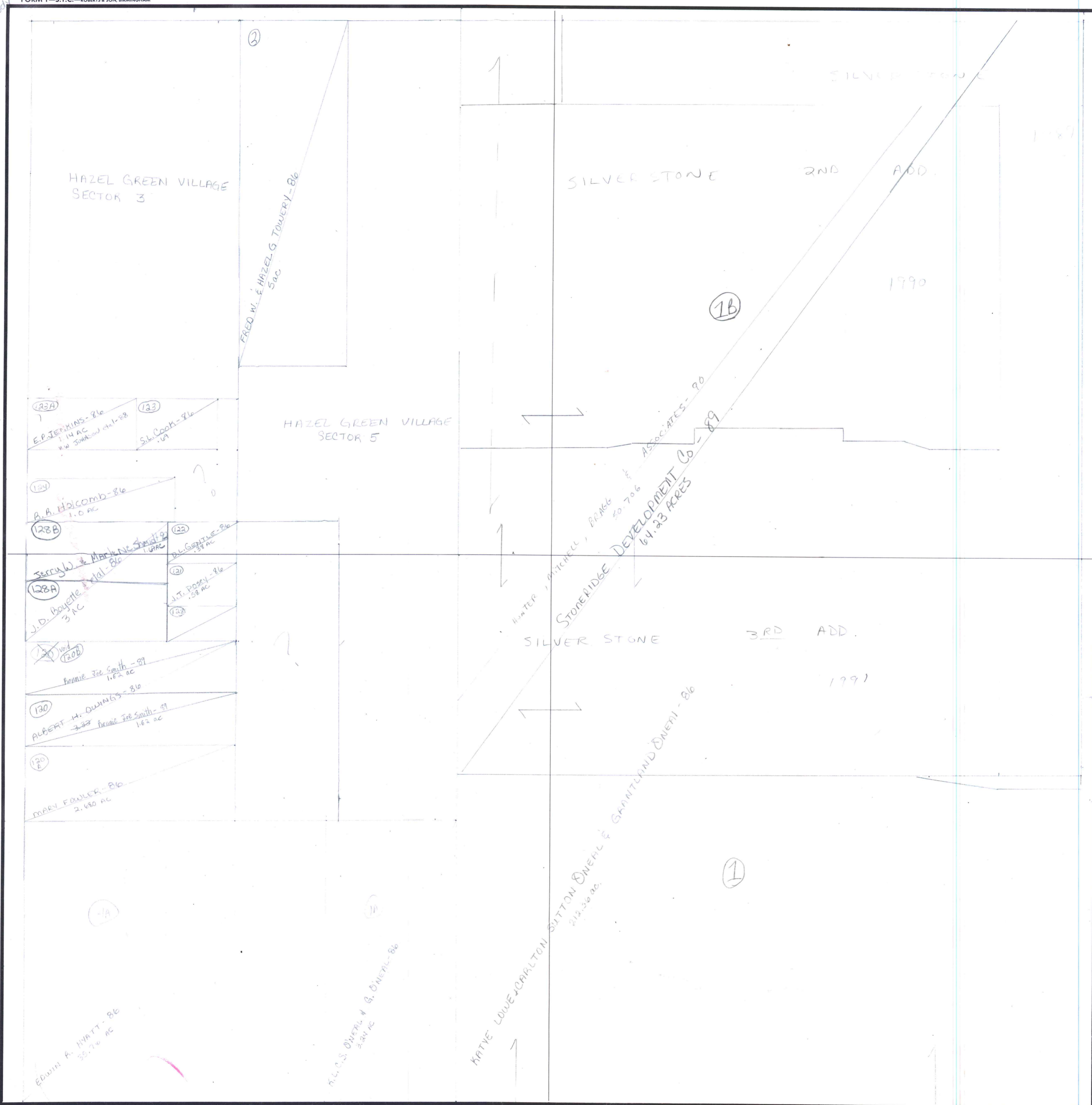


FORM 1-S.T.C.-ROBERTS & SON, BIRMINGHAM

Center of N body

NE COR of SEC



COUNTY MADISON

Scale 1" = 150 FT

UNPLATTED

- 128A murie H. Tucker - 1988
- 128B Richard C. Allison - 1988
- 129 Mrs. J. C. Allison - 1988

Center of E body