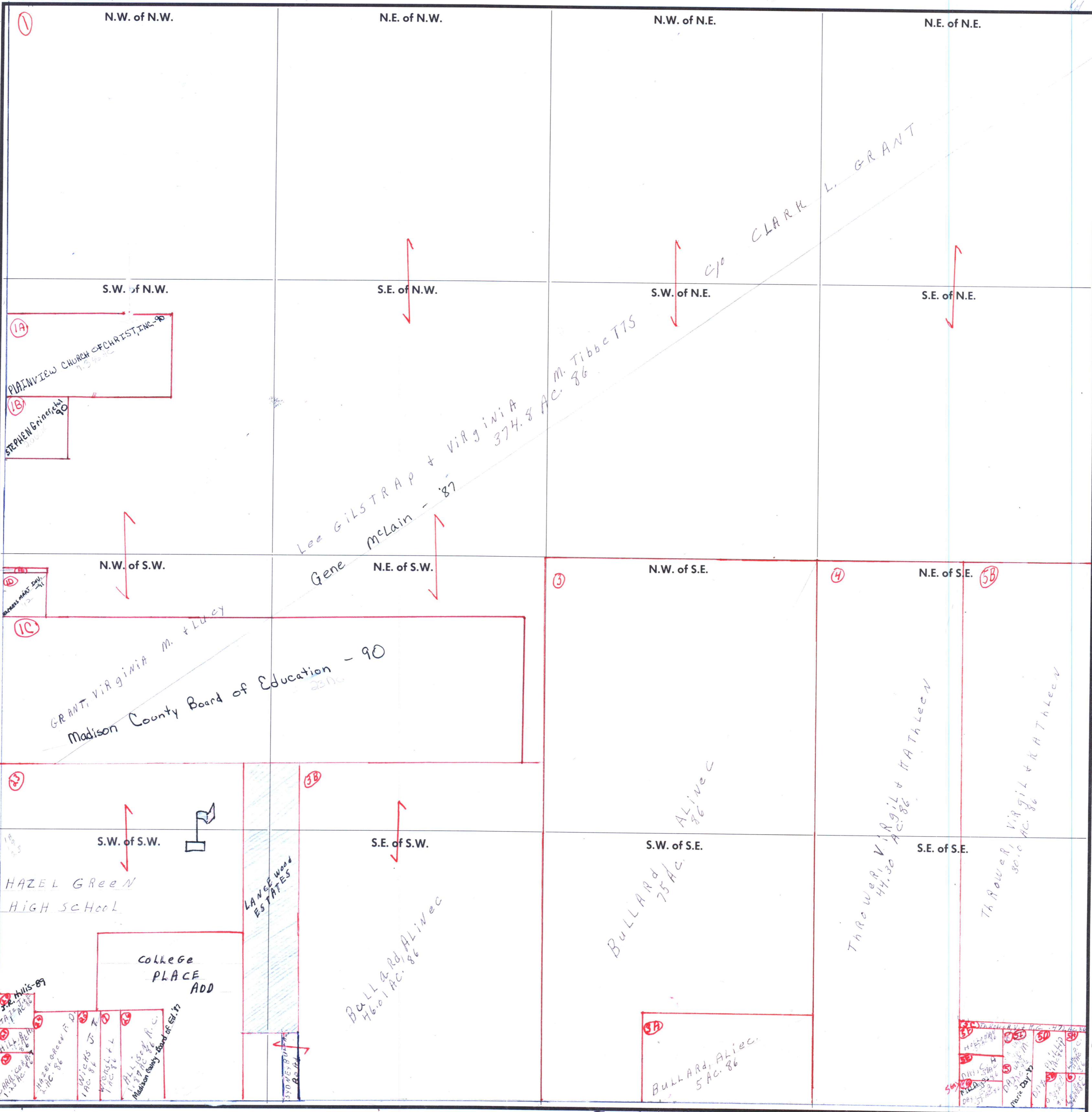


FORM 1-S.T.C.-ROBERTS & SON, BIRMINGHAM



Express Mart Investors Ltd. - 91

Parcel 18, 19, 20, 21, 22, 23, 24, 25, and 26 are carried on 1-1E-19-80A parcel.

Michael Adcock 31 AC 92
Michael Adcock 24 AC 92