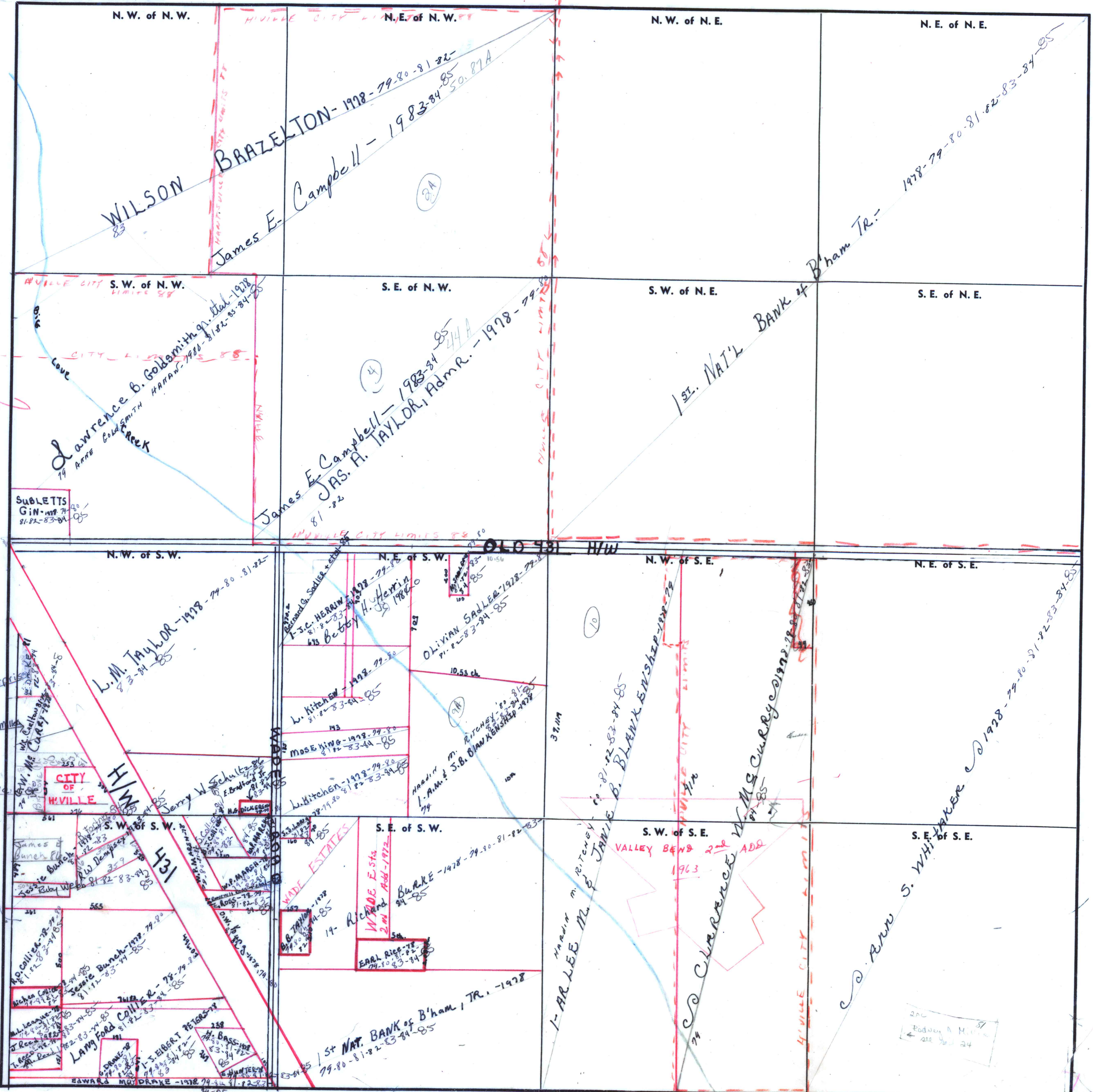


FORM 1—S.T.C.—ROBERTS & SON, BIRMINGHAM



1/10/31
planted too
far West

Joel Miller Enterprises
Inc, 85

Jocelyn & Deborah Miller
85

J.W. Alex
86

James Bunch
85

James Bunch
85

James Bunch
85

James Bunch
85

James Bunch
85

James Bunch
85

James Bunch
85

James Bunch
85

James Bunch
85

200
Podney A. M.
see p. 24