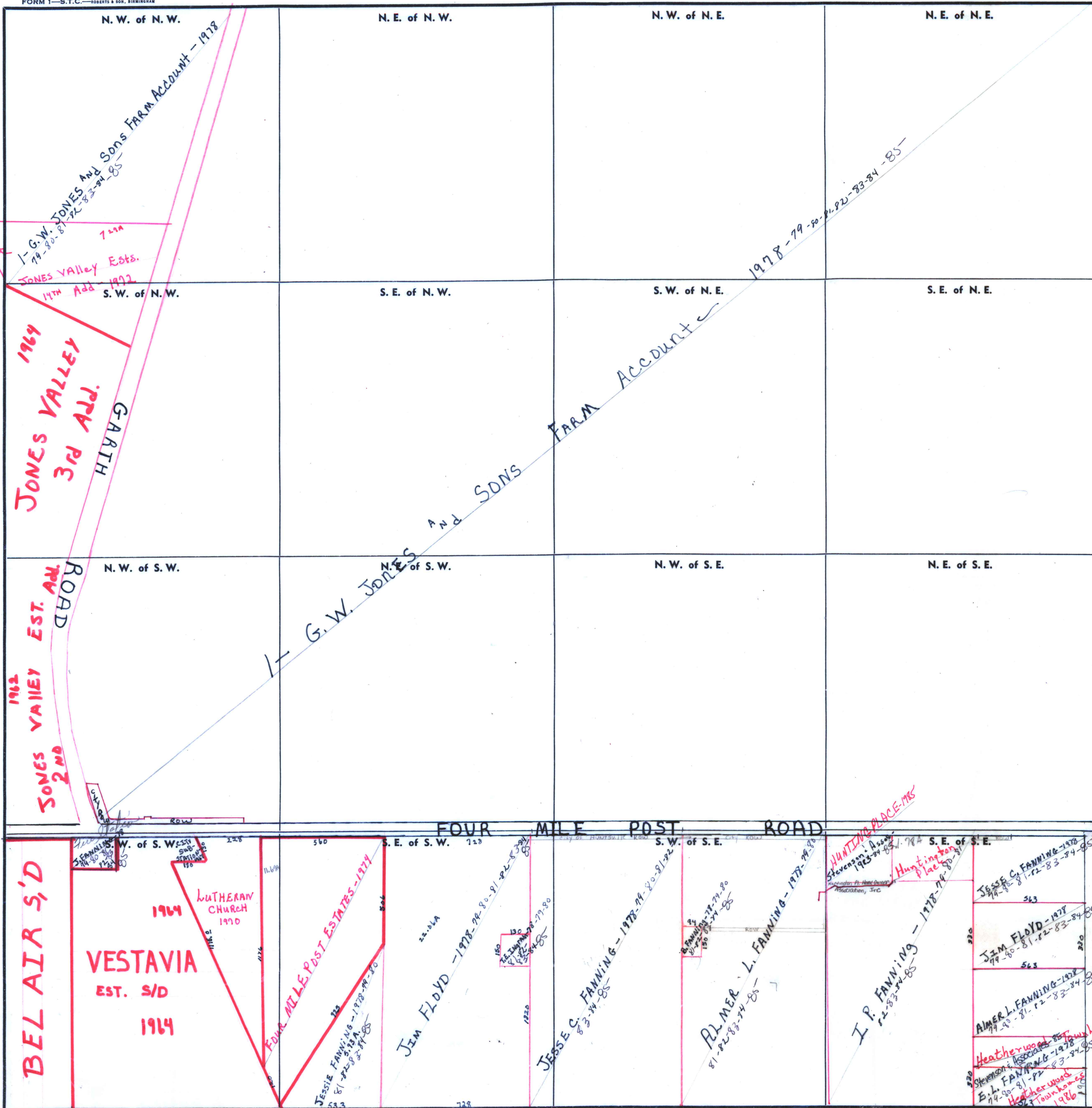


FORM 1—S.T.C.—ROBERTS & SON, BIRMINGHAM



1964  
**JONES VALLEY ESTS.**  
 1964  
 3RD ADD.  
 GARTH

1962  
**JONES VALLEY EST. ADD.**  
 2ND  
 ROAD

G.W. JONES AND SONS FARM ACCOUNT

FOUR MILE POST ROAD

**BEL AIR S/D**  
 1964  
**VESTAVIA EST. S/D**  
 1964

LUTHERAN CHURCH  
 1990

FOUR MILE POST ESTATES - 1974  
 JESSIE FANNING - 1978-79-80  
 81-82-83-84-85

JIM FLOYD - 1978-79-80-81-82-83-84-85

JESSE C. FANNING - 1978-79-80-81-82-83-84-85

PALMER L. FANNING - 1978-79-80-81-82-83-84-85

I. P. FANNING - 1978-79-80-81-82-83-84-85

HUNTING PLACE - 1985  
 STEVENSON ASSOCIATES  
 1983-84-85  
 HUNTING PLACE  
 JESSE C. FANNING - 1978-79-80-81-82-83-84-85  
 JIM FLOYD - 1978-79-80-81-82-83-84-85  
 PALMER L. FANNING - 1978-79-80-81-82-83-84-85  
 HEATHERWOOD ASSOCIATES  
 STEVENSON ASSOCIATES  
 E. L. FANNING - 1978-79-80-81-82-83-84-85  
 HEATHERWOOD  
 1986  
 mes-587