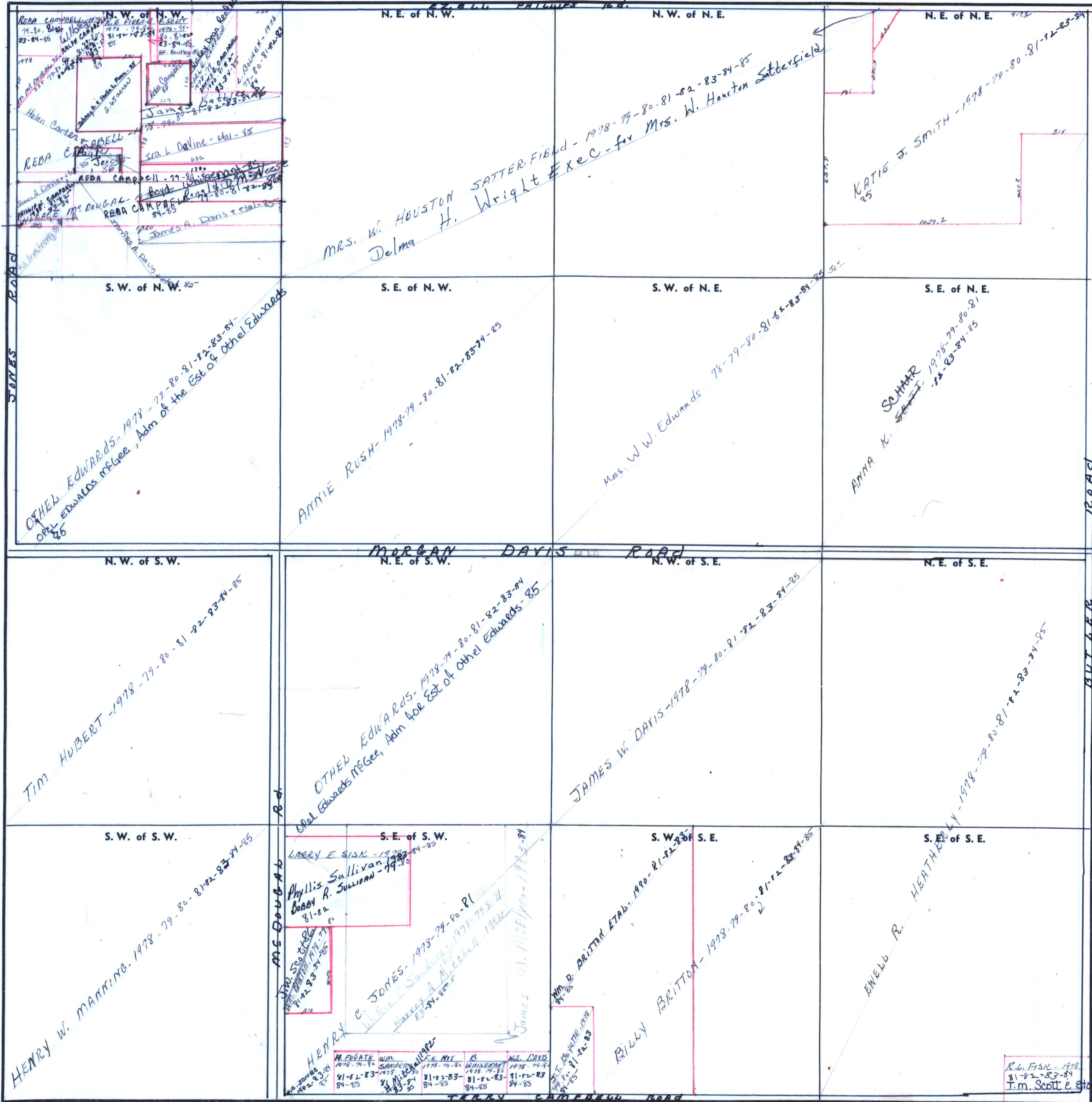


SECTION 11

TOWNSHIP 1

RANGE 1 E

FORM 1—S.T.C.—ROBERTS & SON, BIRMINGHAM



James A. Davis + et al - 85

MRS. W. HOUSTON SATTERFIELD - 1978-79-80-81-82-83-84-85  
Delma H. Wright Exec - for Mrs. W. Houston Satterfield

KATIE J. SMITH - 1978-79-80-81-82-83-84-85

OTHEL EDWARDS - 1978-79-80-81-82-83-84-85  
Othel Edwards McGee, Adm. of the Est. of Othel Edwards

ANNIE RUSH - 1978-79-80-81-82-83-84-85

Mrs. W.W. Edwards 78-79-80-81-82-83-84-85

ANNA K. SCHAAER 1978-79-80-81-82-83-84-85

TIM HUBERT - 1978-79-80-81-82-83-84-85

OTHEL EDWARDS - 1978-79-80-81-82-83-84-85  
Othel Edwards McGee, Adm. of Est. of Othel Edwards

JAMES W. DAVIS - 1978-79-80-81-82-83-84-85

HEATH BRYLY - 1978-79-80-81-82-83-84-85

HENRY W. MANNING - 1978-79-80-81-82-83-84-85

LARRY E. SISK - 1978-79-80-81-82-83-84-85  
Phyllis R. SULLIVAN - 1978-79-80-81-82-83-84-85  
HENRY C. JONES - 1978-79-80-81-82-83-84-85  
James W. DAVIS - 1978-79-80-81-82-83-84-85

BILLY BRITTON - 1978-79-80-81-82-83-84-85

ETHEL B. HEATH - 1978-79-80-81-82-83-84-85

R.L. FISK - 1978-79-80-81-82-83-84-85  
T.M. Scott et al - 85

Scale—1 inch—300 Ft.

COUNTY

293