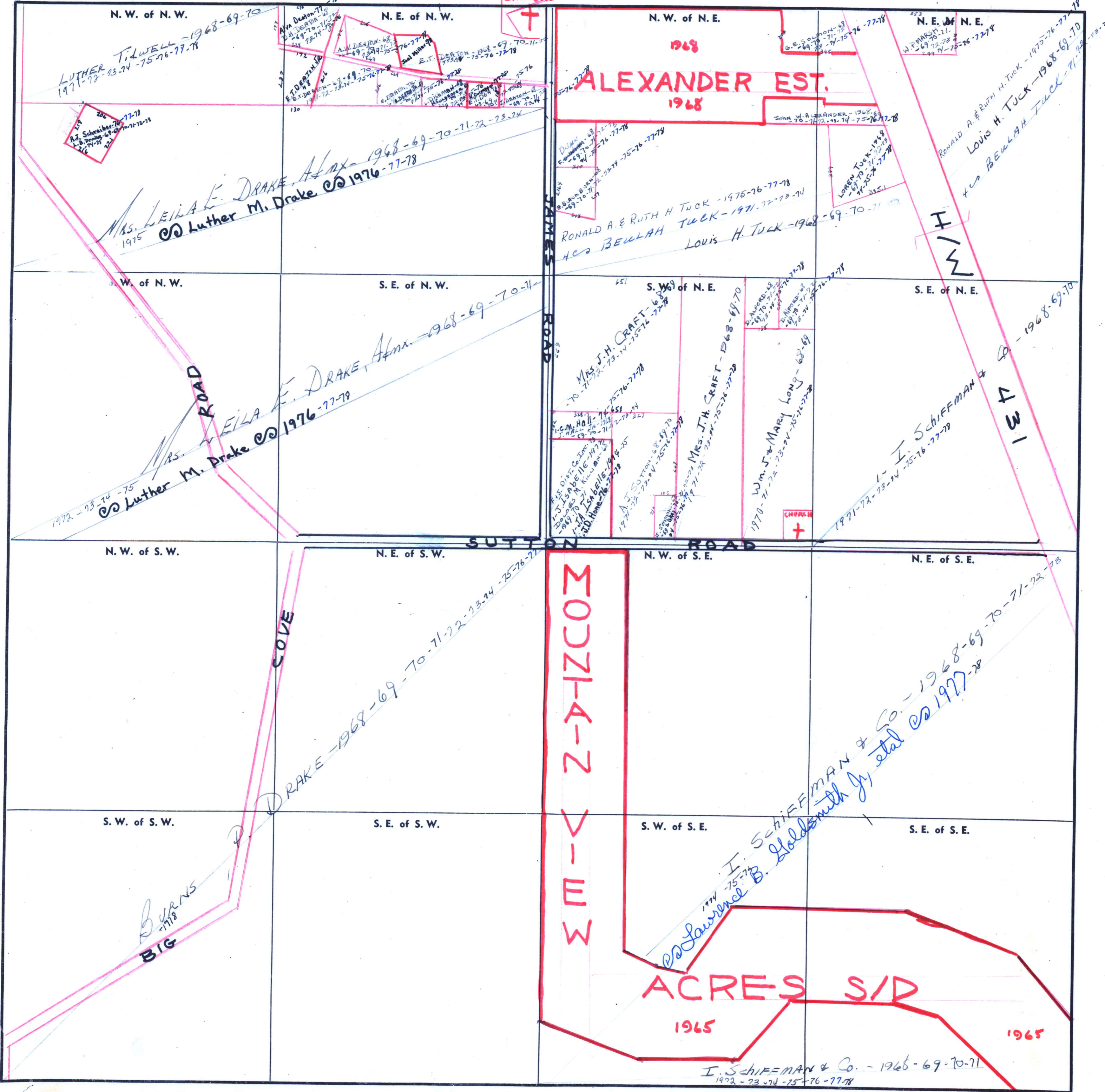


FORM 1—S.T.C.—ROBERTS & SON, BIRMINGHAM



N. W. of N. W. **LUTHER T. DWELL** - 1968-69-70
 1971-72-73-74-75-76-77-78

N. E. of N. W. **ALEXANDER EST.**
 1968

S. W. of N. W. **Mrs. LEILA E. DRAKE, Annex** - 1968-69-70-71-72-73-24
 © **Luther M. Drake** © 1976-77-78

S. E. of N. W. **Mrs. LEILA E. DRAKE, Annex** - 1968-69-70-71
 © **Luther M. Drake** © 1976-77-79

N. W. of N. E. **ALEXANDER EST.**
 1968

N. E. of N. E. **RONALD A. & RUTH H. TUCK** - 1975-76-77-78
Louis H. TUCK - 1968-69-70-71
LOREN TUCK - 1968-69-70-71-72-73-74

S. W. of N. E. **Mrs. J. H. CRAFT** - 1968-69-70
Mrs. J. H. CRAFT - 1968-69-70
Wm. J. & Mary Long - 1970-71-72-73-74-75-76-77-78

S. E. of N. E. **I. Schiffman & Co.** - 1968-69-70-71-72-73-74-75-76-77-78
 © **I. Schiffman & Co.** © 1977-78

SUTTON ROAD

COVE

30.31 ACRES S/D
 1965

I. Schiffman & Co. - 1965-69-70-71
 1972-73-74-75-76-77-78