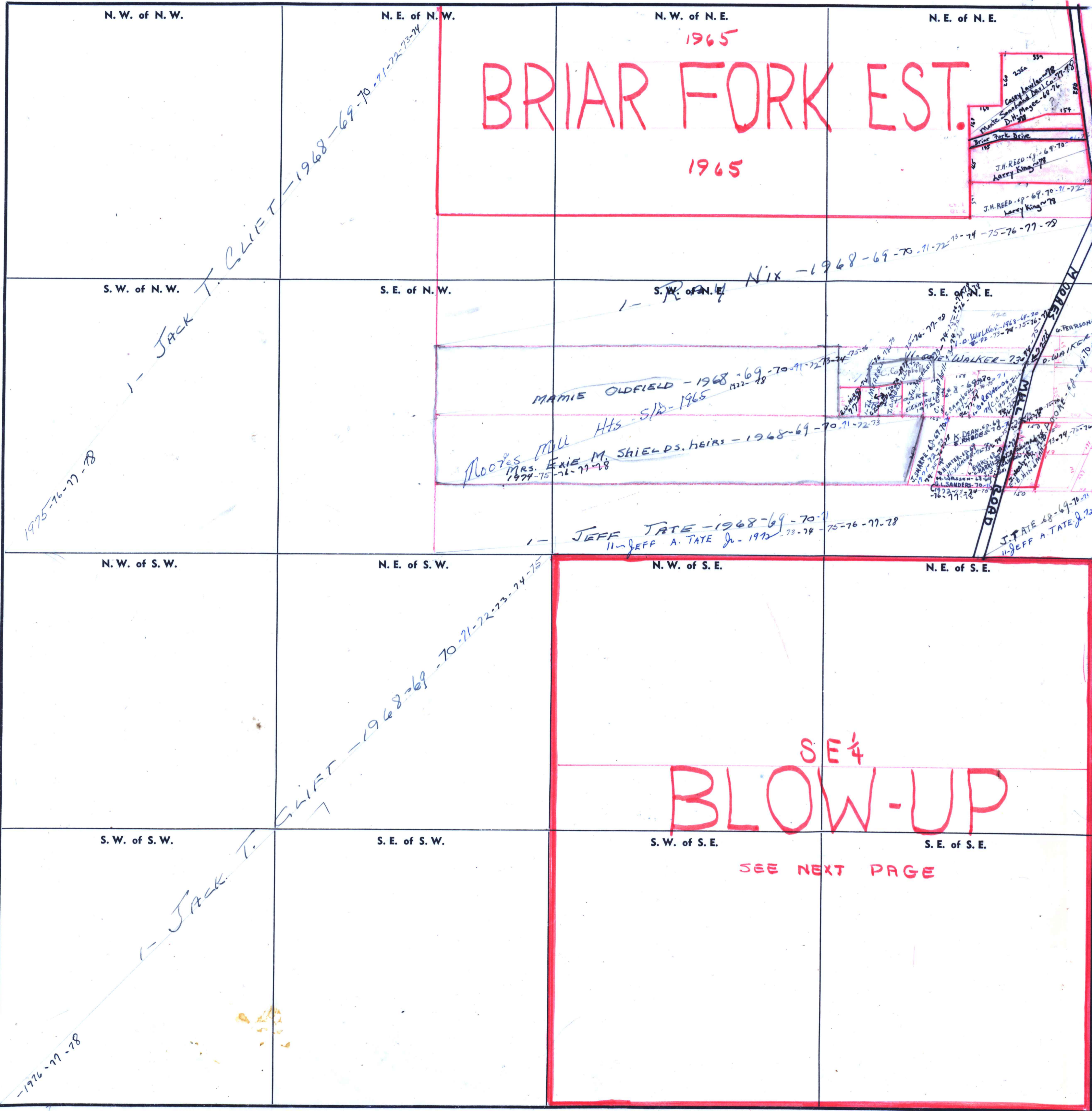


FORM 1—S.T.C.—ROBERTS & SON, BIRMINGHAM



1975-76-77-78

1 - JACK T. CLIFT

CLIFT - 1968-69-70-71-72-73-74-75

1 - JACK T.

-1976-77-78

BRIAR FORK EST.

1965

1965

S.W. of N.E.

MAMIE OLDFIELD - 1968-69-70-71-72-73-74-75-76-77-78

Mrs. EXIE M. SHIELDS, HEIRS - 1968-69-70-71-72-73-74-75-76-77-78

JEFF TATE - 1968-69-70-71-72-73-74-75-76-77-78

SE 1/4 BLOW-UP

SEE NEXT PAGE