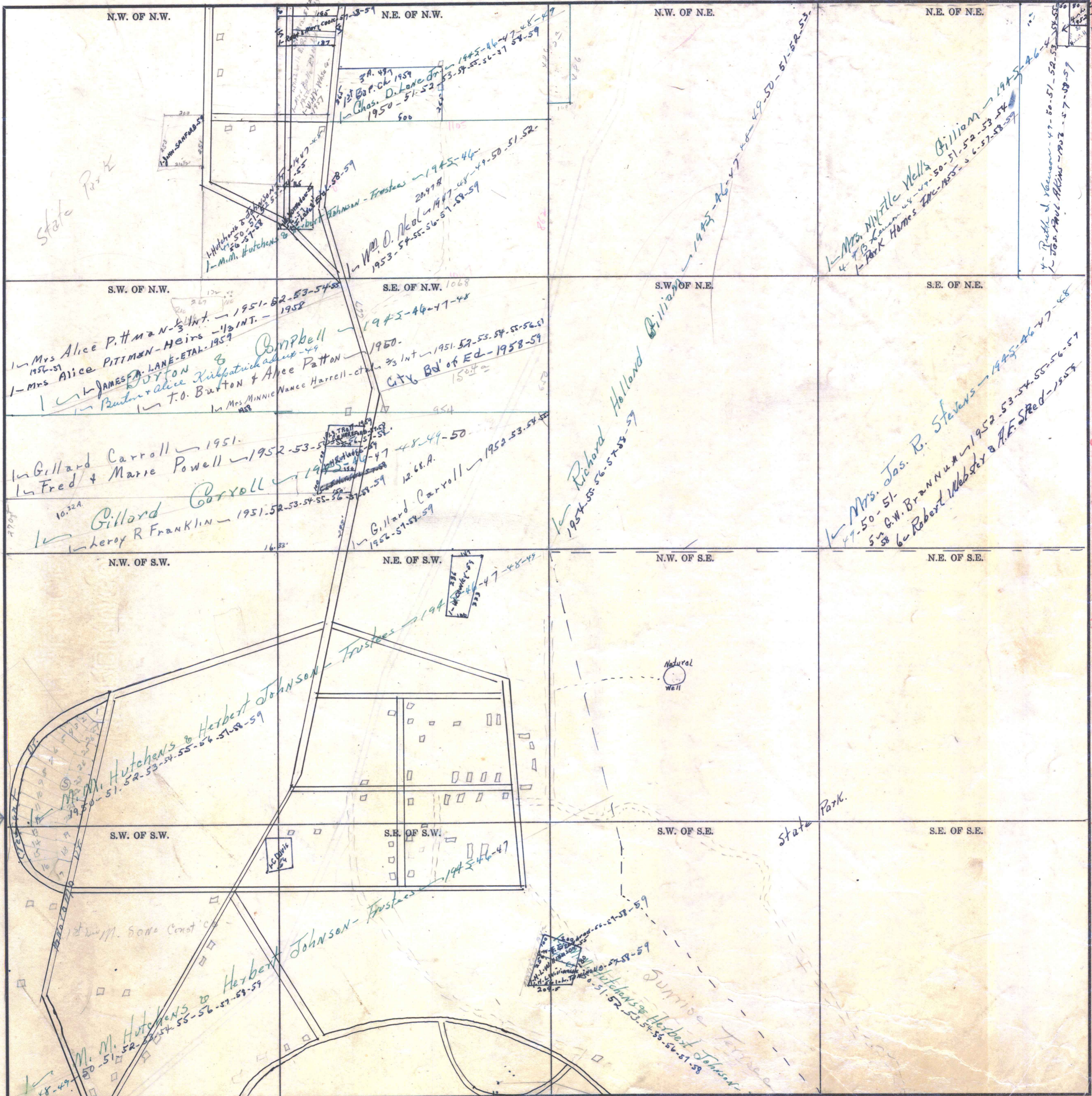


Form 1-S.T.C. 4725 MARSHALL & BROS. CO. HARTFORD



Scale - 1 inch = 300.00 Ft.

COUNTY

Handwritten notes in the top right corner, including "1950-51" and "1951-52-53-54-55-56-57-58-59".

Vertical handwritten notes on the right edge, including "1951" and "Limit".